



CHelsea WRESTLERS honored at Monday night's Sports Banquet were, from left, Dale Poertner, 1974 co-captain; Mike Agopian, chosen most valuable wrestler on this year's squad and co-captain for next year's; Darryl West, also chosen co-captain for next year; Nick Keiser, rated most improved wrestler of the Chelsea matmen; and John Beeman, one of this year's co-captains.

Coach Balistrere Praises Five Seniors

Varsity basketball coach Tom Balistrere has singled out his graduating senior cagers for praise in the calm that follows the squad's spectacular 10-4 league performance. The five players singled out were John Houle, Jeff Sprague, Rick Miller, Tim Treado, and Marv Guster.

Of John Houle, Coach Balistrere said, "John's contribution to the team's good season was two-fold: He could play both guard and forward, and many times was called upon to do both, and he handled either task beautifully."

"John's outstanding game was against Lincoln, in which he recorded several assists and steals. His hustle and hard work earned him a Bulldog award," Houle plans to attend Eastern Michigan University after high school graduation, Coach Balistrere reported.

Jeff Sprague, Balistrere stated, "has earned his second varsity letter and has contributed greatly in this year's winning season. Jeff's unselfishness, hustle and desire helped stabilize our Bulldogs throughout the season. Against Lincoln, Jeff played very well and was instrumental in both our league victories over the Rail-splitters."

Sprague, affectionately known as "Spruce" or "Smokey," "displayed fine attitude along with his basketball skills." Jeff plans to attend Central Michigan University next fall.

Of Rick Miller, the coach declared: "Rick's outstanding jumping ability and aggressiveness under the boards was an added factor in the team's success this year. Rick also had several 20-point games, as well as 10 or more rebounds per game."

"Rick's most important performance was a 22-point scoring spurge against Dexter that came in the second half. His fine play earned him an honorable mention for the Southeastern Conference all-league team."

Marv Guster, one of the Bulldog co-captains, "provided the much-needed leadership and spirit which generated the final league record of 10-4," Coach Balistrere said.

Marv was also instrumental in our eight-game winning streak. His finest game was an outstanding performance against Lincoln. (Continued on page three)



BULLDOG CAGERS, singled out for mention at the annual Sports Banquet Monday, are from left, Rick Miller, voted most improved player on the squad; Rick Sweeny and Dave Alber, co-captains for the 1974-75 season; and Tim Treado, senior co-captain who was rated most valuable player on the team.

WEATHER

	Min.	Max.	Precip.
Wednesday, March 6	37	57	Trace
Thursday, March 7	39	59	0.05
Friday, March 8	33	39	0.95
Saturday, March 9	32	43	0.00
Sunday, March 10	30	45	0.00
Monday, March 11	27	40	Trace
Tuesday, March 12	23	39	0.00

By H.K.L.

The Chelsea Standard

ONE HUNDRED-FOURTH YEAR—No. 39

14 Pages This Week

CHELSEA, MICHIGAN, THURSDAY, MARCH 14, 1974

15c per copy

SUBSCRIPTION: \$4.00 PER YEAR

Wrestlers Win Two Third-Place Finishes in State

Despite placing only two wrestlers in last Saturday's State Class B wrestling meet, Chelsea managed to finish higher than other local squads who sent more men into the competition.

Chelsea recorded thirds from both Darryl West at 148 pounds and Mike Agopian at 122 pounds. Dexter, which sent three grapplers to the championships, had only Mike Klapperich finishing third at 98 pounds. Saline, too, had a single placer, Mark Kohler, with a fifth at 138 pounds, and South Lyon's Gary Ison took a third in heavyweight. Pinckney, which sent five grapplers into the championship, boasted only Dave Charboneau's second-place finish.

A total of 87 Class B schools entered 192 wrestlers in the championships, which began Friday. Mike Agopian began by suffering a pin loss to Tom Cadena of Alma. He then came back through five consolation matches, defeating Randy Loner, 23-8, of Zeeland; Greg Presler, 30-3-1, defending state champion from Fruitport; Bryant Vedder, 26-4, of Charlotte; Tom Cadena, 24-8, of Alma; and Tim Wehner, 24-8, from Livonia Clarenceville.

Darryl West won over Tim Swift, 32-5, from Okemos, and Tom Wright, 24-10, from Fenton. Darryl then lost his semi-final match to Ed Krager, 29-1, from Lake Shore. He then came back to defeat Rich Shamp, 30-2, from Marshall, and Jack Biggs, 26-3, from Kenowa Hills, to gain his third place. "Both wrestlers performed very well at state," said Coach Rich-

ard Bareis. "And although it would have been nice to have finished higher, both young men made the closing of the 1974 wrestling season a highly successful affair."

"Both Mike and Darryl showed that they could accept defeat, and then come back and be winners; and that was more than a lot of other wrestlers could do. We are very proud of them," Coach Bareis concluded proudly.

Independents All Elected

In an election that boasted none of the thrills-and-chills of the one across the way in Dexter, a tiny total of 87 Chelsea voters turned out for the village election this Monday.

All Independent party candidates received a large share of the total votes cast. Harold Pennington was elected to a two-year term as village president with 76 votes; Bruce Galbraith (75 votes); Thomas Dmoch (63 votes); and Don Wood (71 votes) were swept into two-year trusteeships; Judson Goltra received 75 votes to return as village assessor for two more years; and Wallace Wood captured the largest total of the election, 81 votes, in his race for another two-year stint as village treasurer.

Robert Merkel and Katherine Wagner were elected to library board directorships.



CHELSEA'S NATIONAL HONOR SOCIETY, including new inductees honored at Monday's ceremonies, and senior members, are front row, from left, David Klemer, Jeff Sprague, Deborah Orlovski, and Phyllis Jede. Second row: Charles Clemons, Jan Elsemann, Mary Gilday, Juha Pannonen, Debra Rooke, Karen Severin, Gina Shoemaker, Linda Simon, Sue Shaw, and Linda Shadoan. Third row: Kathy Stoll, Dave Alber, Glenn Alter, Lola Augustine, Karen Bassett, Steve Bennett, Shawn Spaulding, Steven Snyder, and Brian Smith. Fourth row: Pam Blackwell, Mary Beth Chandler, Keith Cockerline, Jodi Daniels, Paul Dowhal, Kathy Dunn, Tim

Eder, Jill Steward, Sheryl Stepp, and Carol Spencer. Fifth row: Cindy Harook, Teresa Gilbreath, Brad Glazier, Francis Grohner, Suzanne Hafer, Greg Haller, Faye Warwick, Cindy Turcott, and Elizabeth Tobin. Sixth row: Dale Heydlauff, Merry Hoffmeyer, Janis Hopkins, Ann Kalmbach, Marilyn King, JoAnn LaFontaine, Teresa Lewis, Kim Longworth, Paul Wood, Daniel Williams, and Alan Werdehoff. Seventh row: Doug Reed, James Powers, Shelly Porath, Mark Pennington, Randy Musbach, Don Murray, Joseph Muldoon, Laurie Mann, and Richard Robbins. Back row: Debra Rossbach, John Schafer, Sharon Schiller, Robin Schneider, and Basil Scott.

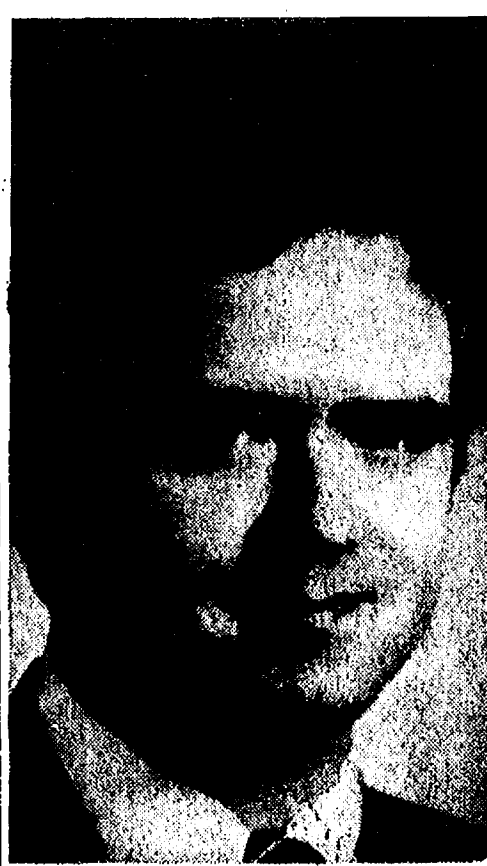
Symphony Band Rated II at Festival

Chelsea High school's symphony band received straight II ratings in last Saturday's Class B band competition at Milan, in what band director Warren Mayer called "a good job."

"The group had some problems with precision and intonation," commented Director Mayer, "but it's a fine band, and I was generally pleased with the performances."

Mayer expressed appreciation to the chaperones who accompanied the group: Mr. and Mrs. Dan Foytik, Mrs. Duane Luick, Mrs. Larry Chapman, Don Pierson, Mrs. Robert Robbins, and Roy Parsons.

Saturday the 7th and 8th grade competition. 8th graders will compete in Class B at Fairlane Middle school in Dearborn Heights, with buses loading at 7 a.m. at Beach Middle school. This, the band's first Class (Continued on page three)



WILLIS W. SNYDER, attorney, opened a new law office at 121 S. Main St. this week. Snyder, a 1969 graduate of the University of Michigan College of Law, has been practicing for the four years prior to this in California and Ann Arbor, and served briefly as assistant city attorney in Ypsilanti. He is a member of both the Washtenaw County Bar Association and the Michigan State Bar Association. Snyder expects that he and his wife, Cecily, will be moving to the Chelsea area soon.

Steven Small Found Guilty on Drug Charges

Steven Small, arrested at the same time last year as Diane Stoffer on a charge of possession of LSD with intent to deliver, has been found guilty as charged and will be sentenced April 4.

Evidence presented showed that 33,600 units of LSD were present in the trunk of Small's car at the time of his arrest.

Miss Stoffer's case has not yet gone to trial. A March 1 hearing reviewing the defense's contention that Miss Stoffer had been entrapped was ruled invalid by Circuit Court Judge Edward Deake.

Biddy Wrestling Starts Saturday

All the aspiring wrestlers in the community, enthralled by the exploits of Chelsea wrestlers' performances this year, may be excited to learn that the Recreation Council will begin a six-session biddy wrestling course this Saturday for 7th and 8th graders. (Continued on page six)

Winners Named in Spring Forensics

Spring forensics finals were conducted this past week at Chelsea High school under the stern judging of Steve Kemski, former head debate coach at the University of Michigan, in preparation for the Brighton Invitational Tournament this Saturday.

Winners of the top two places in each of the various categories will compete in the tournament, as well as those who placed third, fourth and fifth.

For district competition, scheduled for March 27 at Chelsea High school, only the top two in each category will compete against teams from Brighton, Saline, Howell, Dexter, Fowlerville, Manchester, and Ann Arbor Greenhills.

In men's oration, Brad Glazier took first place and Steve Bennett, second. In women's division, Laurie Mann earned the top spot, with Shelly Porath in second.

Extemporaneous speaking, men's division, saw Greg Haller ranked first and Curt Allhouse second. Brenda Shadoan, the only entry in women's extemporaneous speaking, took first place in that division.

Placing first in radio newscasting was Basil Scott, followed by Rick Robbins in second place.

In declamation, which is a category only for sophomores that involves the entrants delivering speeches (usually college oration) not of their own composition, Lynette Schiller was rated first and Erin Hendrick earned second.

Earning first rating in multiple reading was a group called "The Jukes Family," composed of Craig Johnson, Dale Poertner, Dave Clemons, Tom Boylan, Jan Powers, and Sue Ottoman. Placing second was "Himself," members of (Continued on page eight)

Public Meeting Set To Discuss School Millage

A concerned Chelsea Board of Education, confronted with the so-called "Bursley Bill"—has presented district taxpayers with an operational millage request of 14.78 mills for the March 26 election.

Of that figure, 10.98 mills will be a renewal of the levy authorized for the past five years. The requested increase will be reduced by one-half mill by a reduction in the debt requirement levies approved, making the net increase in millage 3.3 mills.

Neither the Chelsea Board of Education nor local taxpayers are particularly enamored with that 3.3 figure, considering that it means in dollars and cents that, with passage of the operational millage, each taxpayer will be levied taxes of \$330 cents more per thousand dollars of assessed valuation of property owned, for the same over-all program.

However, the problems facing the Board of Education this year in terms of setting an adequate operational millage figure are more complex than ever before.

Initially, of course, there is the wearying awareness of the country's troubled economic situation. Business manager Fred Mills explained in The Standard last week that "the proposed budget is approximately 10 percent higher than last year. This generally reflects the increased costs of ser-

vices and materials to the district. Just as an example, gasoline prices have risen by 235 percent to the district over the past year, and paper and other supplies which we must provide the students have increased approximately 100 percent."

Inflation, however, combines with two other factors—the various township tax equalization factors recently handed down by the State Tax Commission and the Bursley Bill—to form a situation that is a good deal more complicated than adjusting a budget to fit inflation.

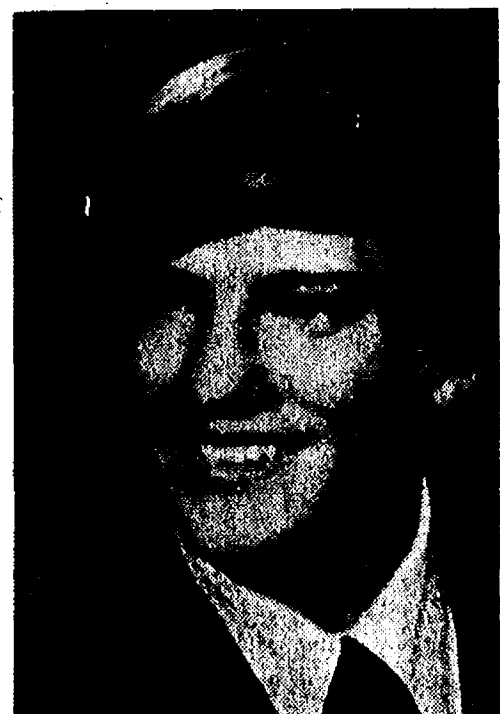
In previous years, a rise in the state equalized valuation of a school district meant that that district would collect a larger dollar amount for the rate of taxes levied. For example, if the assessed valuation of a home rose to \$12,500 from \$10,000, the dollar amount of taxes paid for a one-mill levy would increase from \$10 to \$12.50. In previous years the district would have received this increase.

The adoption of the Bursley Bill by the State of Michigan, however, means that for each dollar rise in the assessed valuation of the Chelsea School District, the district will receive one dollar less in state aid to education.

Board treasurer Don Irwin expressed the situation in dollar amounts last week in The Standard with a statement that "with the (Continued on page six)



JENNIFER LANE



DAVID KLEMER

Chelsea High Students Named As National Merit Finalists

Chelsea High school's Jennifer Lane and David Klemer have been named National Merit finalists and thus enter the competition for some 3,100 scholarships to be awarded through the Merit Program this year.

Finalist standing is earned by high performance not only on the National Merit Scholarship Qualifying Test, but also comparable performance on the Scholastic Aptitude Test. More than 14,000 finalists across the country are in the

and for approximately 2,100 renewable Merit Scholarships.

Jennifer Lane will attend Michigan State University this fall and plans to major in political science, aiming to eventually join the foreign service.

The daughter of Mr. and Mrs. Charles Lane, she is active in high school as a majorette, cheerleader, National Honor Society member, and central treasurer for the high school.



REHEARSALS FOR THE CHS PRODUCTION OF "MAME" continued this week under the watchful eyes of director DiAnn L'Roy and choreographer Joan Yocum, shown here perusing some of the play's musical scores. "Mame" will open next Thursday, March 21, and continue Friday and Saturday, March 22 and 23. Good seats are available for all performances, according to student ticket chairmen.

Uncle Lew from Lima Says:

DEAR MISTER EDITOR:

There's a lot of things to be said in favor of March, but general speaking the weather ain't one of em. In most of the country this is when winter gets in a few last ticks and spring ain't as quick coming around as we'd like. The fella at the country store Saturday night was in a mood as changeable as the weather.

There was Ed Oolittle, fer instance. Ed said he allus stove up with a cold this time of year on account his old lady tells him to wear to much clothes. Ed said she bundles him up whenever he goes outdoors, and then he works up a sweat, takes off a sweater or

two, then gets chilled and spends the night sneezing. Ed said fer shore he wasn't included in a health survey he saw the results of in the papers recent.

A six-year checking of 7,000 people, Ed reported, showed that the best protection agin catching a cold was to be over 60 year old, to be fairly well to do, to never work on Monday and to be married with no more than two children. Ed allowed that the report went on to say someone about sycomatic illness, which means if you think you're catching a cold you are. Ed said he didn't understand that, but that the survey left him out on the well off part. Ed said he allus had figured that a head cold was about the only thing in this world that picks on the just and unjust, the rich and the pore.

Clem Webster said he was in a hurry fer spring so he could see if any postmen got up nerve to wear them knee pants they got permission to wear last summer. Clem was of a mind that men has been getting sissier ever since they left the watch pocket off their trousers and stopped striking matches on the seat of their pants. Clem said one thing fer shore is that if grown men start wearing short pants fer everyday work, he ain't going to be able to laugh at his old lady's Easter hats any more.

General speaking, the fella's was agreed with Clem's word about men's fashion. It were Zeke Grubb that allowed no self respecting men at all and very few circus clowns would be caught in some of the outfits you see passing fer men clothes nowadays. Zeke said with the long hair, high heels, six-inch cuffs in the bell-bottom pants, and the wildflower shirts the men today look like the women did afore they all took to wearing blue jeans and men's work shirts.

Speaking of wimmen, Bug Hookum said he had heard a rumor that the big oil companies were going to stop using credit cards. The reasoning, Bug allowed, is that they can sell all the gas they can make fer cash at whatever price they want, so why bother with all the extra paperwork of sending out bills ever month. Bug was of a mind that would stop the country dead in her tracks, wimmen buy everything on credit, said Bug, and they got to have them gas cards to git to where the bargains are. Wimmen saying "charge it" holds America together, was Bug's words.

A farmer came into town last Friday night and he asked how much a hamburger cost. The waitress told him: \$1. The farmer said to his wife: "Do you realize we have a cow at home worth nearly \$90,000?"



Howell Livestock Auction
Starts 1 p.m. Every Monday
Market 677-8941
The Wise Owl Says Ship to Howell
Phone 546-2470. Bim Franklin

Market Report for Mar. 11

CATTLE—
Good to Choice Steers, \$46 to \$47.50
Good-Choice Heifers, \$43 to \$46
Fed Heifers Steers, \$40 to \$43
Utility & Standard, \$40 and down.

COWS—
Heifer Cows, \$38 to \$40
UT-Commercial, \$34 to \$38
Canner-Cutter, \$30 to \$35
Fat Beef Cows, \$30 to \$32.

BULLS—
Heavy Bologna, \$40 to \$45
Light and Common, \$40 and down.

CALVES—
Prime, \$70 to \$74
Good-Choice, \$60 to \$70
Heavy Deacons, \$50 to \$60
Cull & Med., \$40 to \$50

FEEDERS—
300-600 lb., Good to Choice Heifers, \$40 to \$50
400-700 lb. Good to Choice Steers, \$45 to \$55
300-500 lb. Heifer Steers, \$45 to \$52
500-800 lb. Heifer Steers, \$38 to \$45
Common & Med., \$35 and down.

SHEEP—
Shorn-Slaughter Lambs, \$38 to \$40
Good-Utility, \$35 to \$38
Wooled Slaughter Lambs, \$37 to \$39
Good-Utility, \$34 to \$37
Slaughter Ewes, \$12 to \$18
Feed Lambs, all weights, \$34 to \$37

HOGS—
200-230 lb. No. 1, \$35.50 to \$36.20
200-240 lb. No. 2, \$35 to \$35.50
240 lb. and up, \$34 to \$35
Light Hogs, \$34.50 and down.

Sows—
Pency Light, \$31 to \$32
300-500 lb., \$30 to \$31
500 lb. and up, \$29 to \$30

Boars and Stags—
All weights, \$27 to \$31

Feeder Pigs—
Per Head, \$18 to \$34

HAY—
1st Cutting, 50c to 90c
2nd Cutting, 90c to \$1.30.

STRAW—
Per Bale, 50c to 65c

COWS—
Tested Dairy Cows, \$400 to \$650
Tested Beef Type Cows, \$300 to \$400

\$50 REWARD

For information and arrest of those who stole tire wheel out of wheelbarrow, ladies bicycle and those stealing trees from our tree farm on Seitz Dr., near I-94, Fletcher Rd. exit, Chelsea.

PLEASE CALL

HEISE'S TREE FARM

971-2244

ST. PATRICK'S SPECIAL GREEN BEER

MARCH 15-17

Remember the Snowstorm!

"Come and see our Expansion Program"

INVERNESS INN

Your Innkeepers: Matt and Marge
13996 North Territorial Rd. - North Lake

YOUR FAVORITE MEALS
SHRIMP, CHICKEN & FISH DINNERS

BEER - WINE - LIQUOR - PIZZAS
LUNCHEON SPECIALS

Established 1871 **The Chelsea Standard** Telephone 476-1371

Excellence Award By Michigan Press Association
1951-1952-1960-1964-1965-1966
Walter P. Leonard, Editor and Publisher

Published every Thursday morning at 800 North Main Street, Chelsea, Mich. 48118, and second class postage paid at Chelsea, Mich., under the Act of March 3, 1879.

Subscription Rates (Payable in Advance)
In Michigan: One Year \$4.00, Six Months \$2.25, Single Copies \$.15
Outside Michigan: One Year \$6.00, Six Months \$3.50, Single Copies \$.20
Service men or women, anywhere, 1 year \$4.00

NATIONAL ADVERTISING REPRESENTATIVE
MICHIGAN NEWSPAPERS, INC.
10000 E. 14th Ave., Detroit, Mich. 48204

Next shortage: public patience...



MICHIGAN MIRROR

By Elmer E. White, Secretary, Michigan Press Association

Target: Rape Law

"We must get rid of the practice of putting the victim on trial." So says Jan BenDor, an Ann Arbor psychologist who also serves as co-ordinator of the Michigan Women's Task Force on Rape.

The comment is perhaps what you'd expect to hear from a woman trying to change Michigan's rape laws.

But she is far from alone in that assessment of the current law.

Take, for instance, this comment: "Our criminal justice system treats the woman worse than the criminal." That, from Philip G. Tannian, Police Commissioner of Detroit. (Tannian reports a 40 percent increase in the number of rapes in 1973, compared to 1972.) Tannian also is interested in a change in the law.

Ms. BenDor's committee, meanwhile, has been working for months with the House Judiciary Committee in an effort to write a new rape proposal that will cover the women's objections as well as those of the lawmakers.

One particular area of difference appears to be sentencing. The sentence for rape conviction now is life imprisonment. The women want that changed because they say "life" is a "deterrent to conviction."

They recommend imprisonment for not less than five nor more than 20 years for conviction of sexual assault in the first degree, which they would define as "sexual penetration resulting in serious injury to the victim."

Some lawmakers, however oppose the mandatory minimum idea, saying it does not take into account "individual potential for rehabilitation."

"Most criminologists say there's a point that occurs fairly early in incarceration when a person might be ready to be returned to society," explains Rep. Perry Bulard, D-Ann Arbor. "Almost universally, it would be before five years."

The women say they're willing to compromise on that point, and several others. They do intend to push for some substantive change in the law this year.

Shorten the Ballots
"Bedsheet ballots"—those with seemingly countless names and is-

sues—might just be shortened a bit if a bill recently introduced in the Michigan legislature makes it into law.

The proposal, by Sen. William Faust, D-Westland, would change the current method of allowing prospective officeholders to pay a \$100 fee instead of submitting nomination petitions signed by registered voters.

"As the law now stands, a candidate for county, municipal and some state offices needs no public support at all—just cold cash—to get his name on the ballot," the senator notes. "By eliminating that provision, I hope we in Michigan can achieve at least two major objectives—shorten the ballot and discourage the influence of money in political campaigns."

Detroit Voters already have voiced their support for this concept. Under the new Detroit city charter, recently given voter approval, candidates for common council are required to collect at least 900 petition signatures before they can file for a spot on the ballot. They are prohibited from filing a fee instead of petitions.

Faust figures that "if a candidate is serious about seeking political office, it really shouldn't be that difficult to obtain the required number of signatures."

Ethics Board Named

A "star-studded cast" has been appointed by Gov. Milliken to that new state board of ethics.

The board will attempt to handle complaints and conduct probes of alleged violations of a code of ethics covering Michigan's 55,000 state employees and gubernatorial appointees.

Chairman of the seven-member

board is Paul Goebel of Grand Rapids, a retired businessman and former mayor of Michigan's "furniture" city.

Other members are: former Michigan Supreme Court Justice Theodore Souris of Grosse Pointe; Mrs. Margaret Foersch, Dearborn, former president of the Michigan League of Women Voters; Detroit lawyer William T. Gossett; former Congressman Paul H. Todd, Jr., Kalamazoo; Lawrence Carino, Birmingham, vice-president and general manager of WJBK-TV, Detroit; and Henry G. Marsh, former mayor of Saginaw.

Commercial Horse Enterprise Featured At Farmers' Week

Members of the commercial horse industry will focus their attention on a special program to be offered Thursday, March 21, at Michigan State University.

One of the many attractions for Farmers' Week visitors this year, the commercial horse program will begin at 10 a.m. in the main lobby of Anthony Hall. The morning session will include tours of the university's veterinary science facilities, horse farm and livestock judging pavilion.

The afternoon program, to be held in Room 103 Anthony Hall, will feature discussion groups focusing on riding stables and bridle trails, boarding and training stables and arenas.

Co-sponsors for the day's event are MSU's Departments of Park and Recreation Resources, and Animal Husbandry.

JUST REMINISCING

Items Taken from the Files of The Chelsea Standard

4 Years Ago...

Thursday, March 12, 1970—

Three Chelsea High school basketball players have been accorded recognition as choices for all-league honors among high school cagers. Jim Wojcikl was named to the first team, while Ron Sweny and Howard Treado received honorable mention.

Jane Mann, supported by Kathy Hafner, both members of the Chelsea High school speech bureau, spoke Monday to the Kiwanians of the problem of drug abuse across the country. She told how better students were aware of dangers involved, and that although some had experimented with drugs to some extent, their use is higher in more ignorant groups.

Dennis Brown and Karsten Kargel both placed second in their weight classes in Saturday's state tournament finals. The Chelsea squad as a whole tied for fifth place with Saline in the competition.

Palmer Motor Sales has announced its participation in the formation of drag racing clubs in co-operation with the Ford Motor Co. The clubs are established in conjunction with Ford Drag Team-Performance Seminars presented by three team captains, Ed Terry, Hubert Palatt, and Dick Loehr, all professional drag racers.

24 Years Ago...

Thursday, March 16, 1950—

Vernon Ewald's old wheelchair went into retirement Monday evening when he was presented with a new chair by the Michigan Society for Crippled Children and Adults, and the local Kiwais Club. Vernon hopes to install on his new chair a device similar to one on his old chair, which allowed him to steer it as he propelled it backwards by pushing himself along with one foot.

A new 600-amp., heavy-duty main switch is now being installed in the recently-completed control room building of the Chelsea Electric Light and Water Dept., on Van Buren St., Homer Nixon, superintendent of Chelsea Light and Water Dept., has announced. This replaces the old switch which was housed in the former Electric Light Dept. building on N. Main St.

Lenis Beach entertained nine of his friends Saturday afternoon at his sixth birthday party. Those present were Sandy Hopper, Carol Dancer, Alice Kasball, Jerry K. Phillips, David McLaughlin, Danny Mayer, Jeffrey and Peter Flintoff, and Donald Atkinson.

James Ewald, 20-year-old son of Frederick Ewald, left Friday for Daytona Beach, Fla., where he was to report on Sunday for

spring training as a pitcher with the Green Bay Bluejays, farm team of the Cleveland Indians.

34 Years Ago...

Thursday, March 14, 1940

In the largest election turnout in the history of Chelsea, 1,012 electors of the village went to the polls Monday. Alfred D. Mayer defeated President Roy Harris for the presidency by 246 votes, while W. Arnold Steger defeated Jay E. Weinberg by only three votes.

Pete Grafson, who operated a grocery in Dexter for five years, has rented the Vogel building on E. Middle St. and will open a self-serve supermarket about April 1.

The tenant house on the farm of Herman W. Hayes in Sylvan township, occupied by Mr. and Mrs. Harold Welch, was destroyed by fire last Thursday morning. Most of the contents were saved. The Chelsea Fire Department was called and kept the fire from reaching the other buildings.

The senior play, "Going on Seventeen," is scheduled for March 15, with early publicity predictions that audiences will be "laughing for a week" after seeing it.

CAT-HATERS

Though millions of homes have cats as pets, there are people who can't stand the animals. Among famous cat-haters of history were Alexander the Great, Louis XIV, and Napoleon—possibly because they couldn't tolerate anyone who wouldn't come when summoned.

EXTRA GAS!

Custom installed fuel tanks for all makes of pickups, vans and motor homes.

26 to 50 gal. additional fuel tanks installed from \$155.

CALL FOR APPOINTMENT

475-1347

LLOYD BRIDGES
TRAVELAND

M-52 and I-94 - Chelsea

8083 MAIN ST.
DEXTER
476-8466

DEXTER LOCKER DUNBAR MEATS

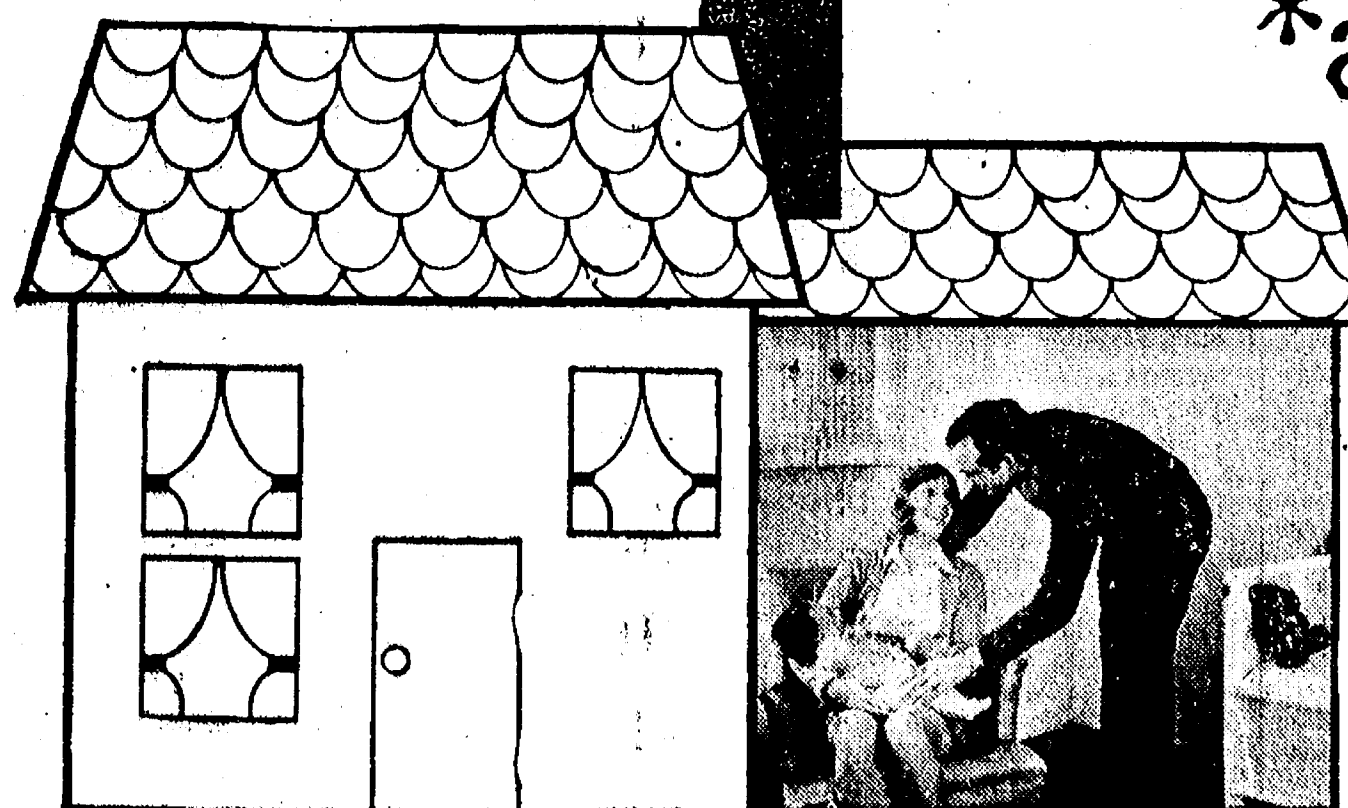
1431 E. MICHIGAN
YPSILANTI
483-7466

MEATS THAT ARE GOOD

FILL YOUR FREEZER NOW

WE HAVE SIDES - HINDS - FRONT

CUSTOM SLAUGHTERING & PROCESSING



*a NEW ROOM for Thomas Matthew

Ann Arbor Federal Savings will help convert or add a room with a Home Improvement Loan. Your monthly payments can be set pretty much to meet your financial requirements. To decorate that nursery, you can borrow \$500.00 and take twelve months to repay, or if you need a larger amount, borrow up to \$5,000.00 and take up to sixty months to repay. There is no down payment and your home need not be paid for. Our Home Improvement Rates have dropped, so now is a good time to get started.

*APPROX. COST FOR MATT'S NEW ROOM, \$39.75/PER MO FOR 12 MOS. Based on a loan of \$446.00 for carpeting and decorating. Total payments equal \$477.00 (annual percentage rate 12.68%).

ANN ARBOR FEDERAL SAVINGS

the savings and loan specialists

ANN ARBOR OFFICES: Downtown, Liberty at Division; Westside, Pauline at Stadium; Eastside, Huron Parkway at Platt; Northside, Plymouth at Nixon; CHELSEA—Main Street near Old U. S. 12; DEXTER—8001 Main Street. Member, Federal Home Loan Bank System, a Federal Savings and Loan Insurance Corporation

CHELSEA FINANCE CORP.
\$25 to \$1,500
For Any
Worthwhile Purpose
See or Call
FRANK HILL
at 475-8631
111 PARK STREET
CHELSEA, MICH.

GOOD STARTER HOME
for handy man, on 20 acres.
Most reasonable terms.
Call me personally at
Real Estate One.
OF WASHTENAW
AL KLEIS
475-7322 1196 M-52, Chelsea 475-8693

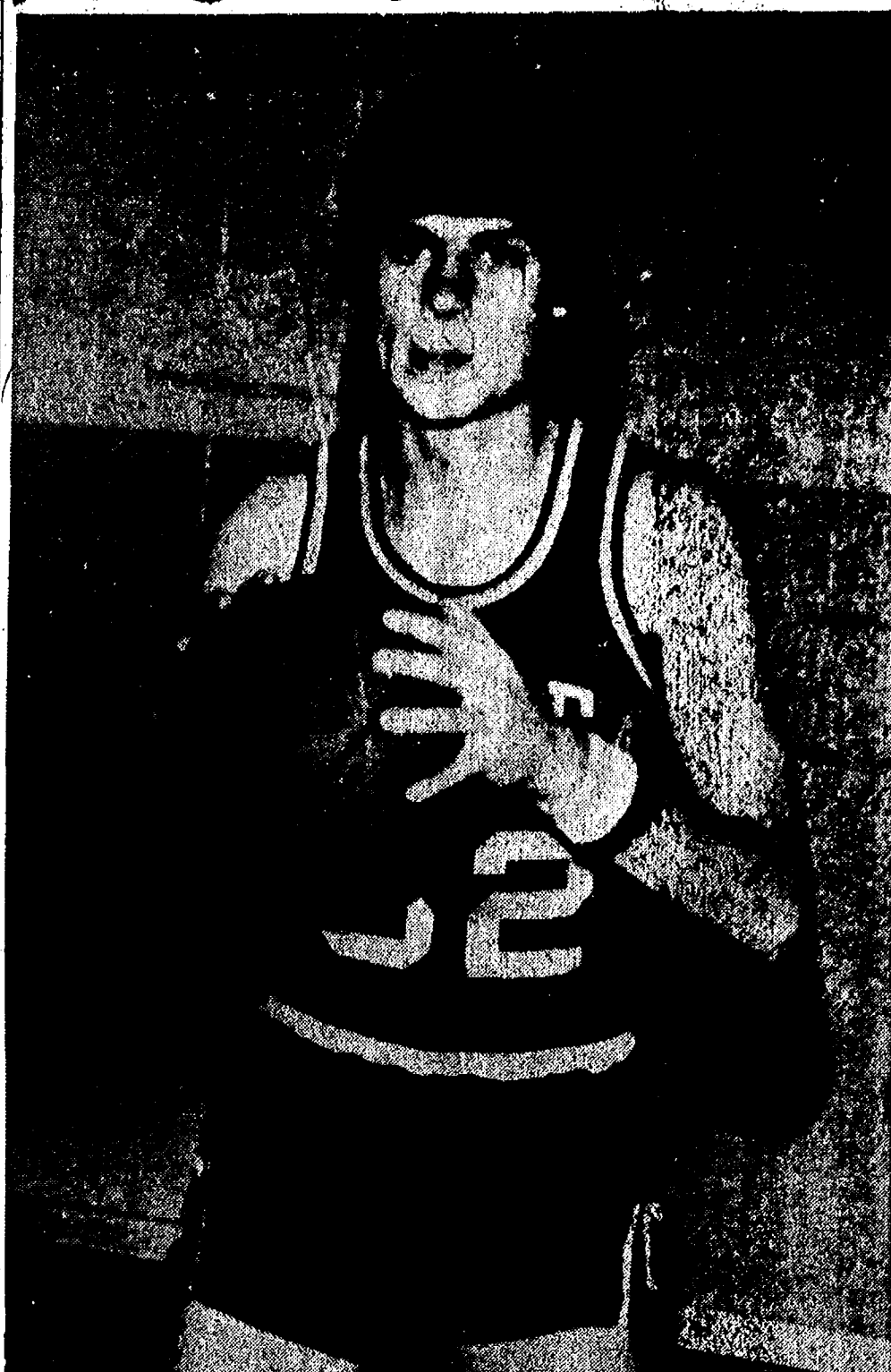
Thank You...

Thanks to you, our fellow citizens, who came out to cast your ballot in support of the Independent candidates for election to Village office. Your vote of confidence in Independent candidates is very much appreciated.

Independent Party

Senior Cagers...
(Continued from page one)
ing one against arch-rival Dexter. In this game, he contributed many assists and fine floor play that eased the way to the 72-60 victory.
Tim Treado, the other Bulldog co-captain, "played a number of fine games throughout the season," said Coach Balistrere. "Tim led the club in acquiring Bulldog awards, which is received for collecting four or more awards in one game. Tim's leadership and playing ability was the keystone to the Bulldog's success, and his fine play earned him the honor of second team in the all-conference squad." Treado has also received a \$2,500 scholarship to attend Olivet College.

Cager of the Week



RANDY MUSBACH, a junior who "likes all kinds of sports," has been playing basketball since 7th grade, although this is his initial year on the varsity squad. In addition to his activities on Coach Balistrere's team, he will go out for baseball again this spring, and coaches a biddy basketball team. Of Chelsea's varsity, he says, "We're starting to have a good basketball program here in Chelsea, and I think it'll be reflected in a second- or third-place finish for us." After high school, he intends to study law. He is the son of Mr. and Mrs. Arden Musbach, and has one sister, Jane.

PIERSON & SONS
LICENSED GENERAL CONTRACTORS
475-8750
New Construction, Remodeling, Siding.

CUB SCOUT NEWS
DEN 2, PACK 454
We met at our den mother's house Wednesday, March 6. We talked about our achievements. Some of us received beads to put on our "Progress Towards Ranks Badge." We had cookies for treats. Rick Eder, scribe

Hustling Bulldog Cage Team Completes Successful Season

Chelsea's varsity basketball coach, Tom Balistrere, took time this week to review what can only be termed a successful season, in which his Bulldogs pulled themselves from a 1973 seventh place finish to this year's final third-place standing in the Southeastern Conference.
As highlights of the season, Coach Balistrere mentioned:
—The pre-season choice of Tim Treado and Marv Guster, both seniors, as co-captains.
—Chelsea's defeat of Lincoln, 69-50, for the Bulldogs' first league victory, which began a three-game winning streak that continued over Novi and Brighton.
—The Bulldog defeat of traditional arch-rival Dexter, which began their heady eight-game winning streak, over Lincoln, Novi, Brighton, South Lyon, a stunning upset over Milan, 43-42; Dexter again, and New Boston Huron.
—The final finish at 10-4 in the SEC and a third-place standing.
—The naming of Tim Treado and Dave Alber to the second team of the all-conference squad. Rick Miller also received honorable mention.
In final season statistics, the Bulldogs individually ended this way:
In rebounding: Tim Treado led the squad with 213, followed by Ron Kiel, 198, and Rick Miller, 184.
Gary Wonders recorded the most assists for the season, with 87, trailed by Treado with 46 and Dave Alber with 39.
Alber paced the squad in steals,

with 44, followed by Miller with 42 and Treado with 39.
In scrambles, Wonders topped the Bulldogs with 24, followed by Treado with 19 and Miller with 14. Wonders recorded the most turnovers, 93, followed by Alber with 88 and Treado and Miller in a tie for third place with 48.
Dave Alber, with 317, led the squad in shots attempted, followed by Treado with 288 and Miller with 235.
Alber also paced the Bulldogs in shots made, 129 followed by Treado with 101 and Miller with 93.
Shooting percentage was led by Rick Sweeney with 44 percent, followed by Ron Kiel with 41 percent and Dave Alber with 40 percent.
Most free throws attempted were by Alber with 85, followed by Treado with 72 and Wonders with 70.
Most free throws made was also led by Alber with 61, followed by Treado with 52 and Wonders with 50.
Best free throw percentage was recorded by Treado, 72 percent, followed by Alber and Wonders tied for second with 71, and Miller with 54.
Largest point total for the season was recorded by Dave Alber, 319, followed by Treado with 254 and Miller with 217.
Alber led in over-all scoring average, with 15 per game, followed by Treado with 12 and Miller with 10.
Most awards were received by Treado, 53, followed by Alber with 44 and Wonders with 40.
High individual point totals in a single game were Treado with 29, Wonders with 27, and Alber with 25.

Band Festival...

(Continued from page one)
B competition, has Chelsea's performance time scheduled for 9:30 a.m.
For 7th graders, competition will be at Saline Middle school, with buses loading at Beach school at 12:45. Their performance is scheduled for 2:45 p.m.
Chaperones are still needed for the 7th grade trip.

Brown Drug Clinches Title in Recreation Basketball League

In last Thursday night's Recreation League action, Brown Drug defeated the Independents, 63-34, to take over sole possession of first place and clinch the trophy.
High scorers for Brown Drug were Meyers with 19, and Kennedy and Wilson with 10. Leading the Independents was Flint with 12.
The only other Thursday night game saw Dana Corp. unable to field a complete team and thus forfeit to Heydlauff's. Dana also forfeited to the Independents Tuesday night.

RECREATION LEAGUE Standings as of March 7

	W	L
Brown Drug	8	1
Lloyd Bridges Chevrolet	7	2
Chelsea Lumber	6	3
Dunlavy Farms	6	3
Dexter Rabble	5	4
Independents	5	4
Heydlauff's	4	5
N. American Rockwell	3	6
Wolverine Prairie Chickens	1	6
Dana	0	9

TYPIST NEEDED

Position now open.
Accurate, 65-80 wpm.

Learn a fascinating new skill in Teletypewriter perforator operation.

Apply in Person

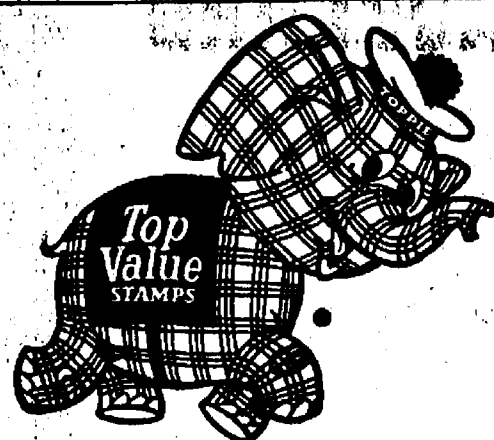
The Chelsea Standard
300 N. Main St. Ph. 475-1371

FREE

8 Steak Knives
free with lubrication,
oil and filter change.

CHELSEA TOWER SHELL

M-52 at I-94, Chelsea

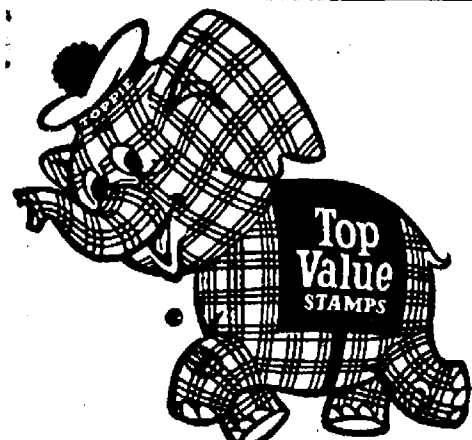


Full Line Supermarket
BEER - WINE - LIQUOR
AUTHORIZED
FOOD STAMP STORE
LOTTERY TICKETS
MARATHON GAS PUMPS
2-CYCO GAS PUMPS

Jiffy market

Big Enough To Serve You... Small Enough To Know You!

Open 7 Days A Week
7 a.m. to 10 p.m.
Corner Sibley & Warkner Rds.
PHONE 475-1701



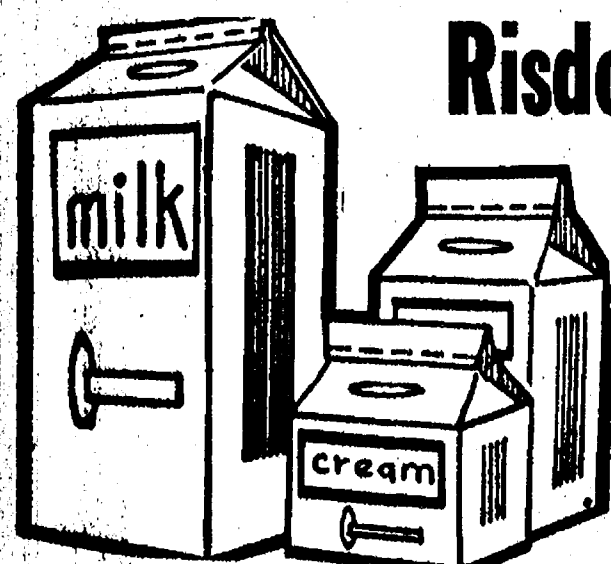
Sale Prices Effective
Thurs., Mar. 14 thru Sun., Mar. 17

TOP VALUE STAMPS - GUARANTEED SATISFACTION - COURTEOUS SERVICE

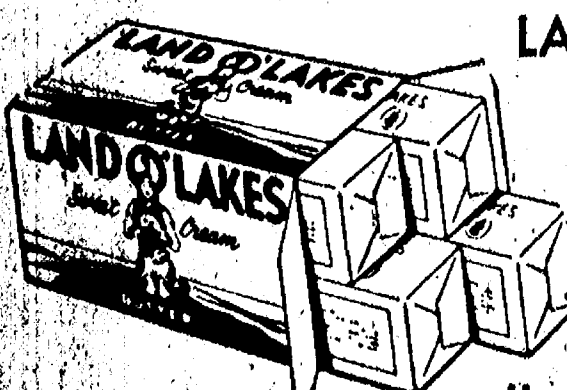
JIFFY MARKET PRICE BREAKS



MIRACLE WHIP
1-Qt. Jar
59¢



Risdon's Milk
1% Low Fat
99¢
One gallon carton



LAND O' LAKES
LIGHTLY SALTED
BUTTER
lb. **79¢**

— MEAT DEPT. —

LEAN - TENDER - YOUNG
WHOLE

PORK LOINS

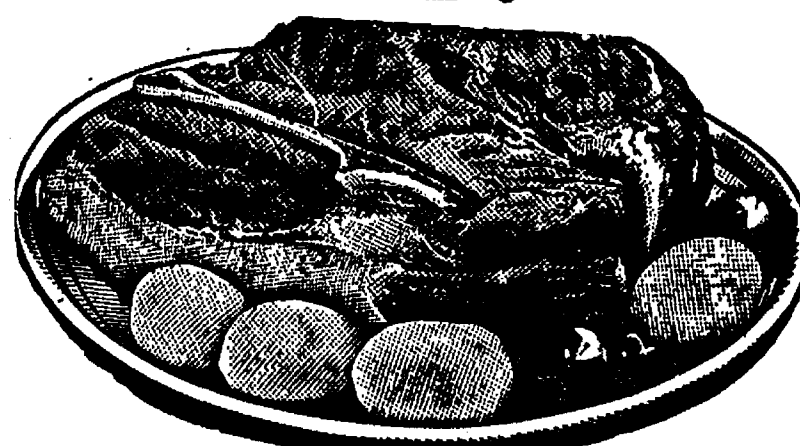
12-14-Lb.
Avg. Sliced **99¢** lb.

1/4 PORK LOIN, sliced... lb. **\$1.15**
END PORK CHOPS... lb. **99¢**
Center Rib Pork Chops... lb. **\$1.39**
Center Loin Pork Chops... lb. **\$1.49**

WHOLE PORK BUTTS

As is or Sliced **89¢** lb. Lean and Tender
Pork Butt Roasts 95c lb. Pork Steak 99c lb.

CAMELOT
CHUNK BOLOGNA... lb. **99¢**
MEADOWDALE
SLICED BACON... lb. **\$1.19**
COURTLAND VALLEY
SAUERKRAUT... 2 lbs. **39¢**
LEAN
PORK NECK BONES... lb. **49¢**
FRESH HOME MADE
PORK SAUSAGE... lb. **\$1.09**



Tender Beef with Flavor!

U.S. Choice Beef Chuck Roast Sale

BLADE CUT... lb. **89¢**
CENTER CUT... lb. **99¢**
ARM CUT... lb. **\$1.19**
ENGLISH CUT... lb. **\$1.19**

U.S. CHOICE STEAK SALE

T-BONE STEAK... lb. **\$1.98**
Porterhouse Steak... lb. **\$1.98**
SIRLOIN STEAK... lb. **\$1.69**
RIB STEAK... lb. **\$1.39**
ROUND STEAK... lb. **\$1.69**

SPECIAL ORDERS
Call Ahead - 475-1701
All sale items limited in quantity and subject to availability.

JIFFY MARKET PRICE BREAKS

R.C. COLA

1-Pt., 16-Oz. no-return bottles

6 pac 69¢



KLEEN-MAID BREAD

ASSORTED 10c CLARK BARS

CLARK CANDY BARS

1 1/4-Lb. Loaf **29¢**
1 1/4-Oz. Bars **5¢**

DURKEE'S SAUCE MIXES

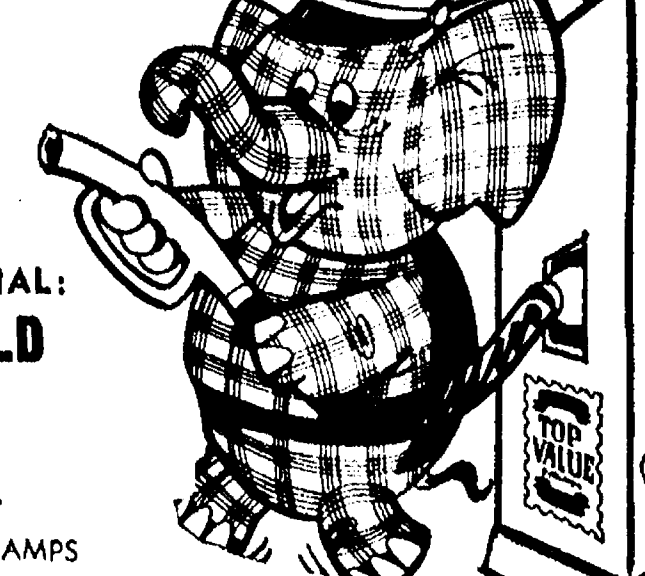
SPAGHETTI SAUCE, 2 1/8-oz. Save 19c, pkg. 10c
CHILI CON CARNE, 2 1/4-oz. Save 15c, pkg. 10c
SLOPPY JOE, 1 1/2-oz. Save 15c... pkg. 10c

REG.

59.9 gal.

Includes all taxes

FILL 'ER UP WITH TOP VALUE STAMPS



GAS PUMP SPECIAL: WINDSHIELD WASHER

59¢ gal.
FREE TOP VALUE STAMPS

Father-Daughter Banquet



CADETTE TROOP 98 gathers to sing "One Tin Soldier" for the annual Girl Scout Father-Daughter Banquet, held Monday in observance of Girl Scout Week.



JULIET LOWE World Friendship Fund contributions are presented by Junior Girl Scout Troop 58 at the annual Father-Daughter banquet Monday. The Juliet Lowe fund, named for the founder of Girl Scouting in the United States, aids in the preservation of the birthplace of the founder in Georgia and also Girl Scout encampments across the world.



INDIVIDUAL INSTRUCTION is given to a member of Junior Girl Scout Troop 689 by an older Scout, during the troop's first aid demonstration at the Girl Scout Father-Daughter Banquet this past Monday.



BEING PREPARED for every emergency is the aim of Junior Girl Scout Troop 689, which presented a first aid demonstration Monday night at the Father-Daughter Banquet. The Father-Daughter Banquet is one of the highlights of Girl Scout Week; theme of which for this year is "Girl Scouts Together."

Fluoride Tooth Program Again Being Offered

Despite rampant television claims to the contrary, certain brands of toothpaste are not the only thing on earth that prevents cavities — fluoride applications also have been found to possess a reasonable success factor.

In recognition of past success, Chelsea's Jaycee Auxiliary will this year sponsor the summer fluoride program with certain restrictions imposed due to the fact of the village's fluoridated water system.

According to Mrs. Vivian Yarger, general chairman of this year's fluoridation program, fluoride treatments reduce new tooth decay by 40 to 50 percent, which is a big cut in the major part of dental bills for children.

The program is limited to pre-schoolers, kindergartners, 2nd graders and 5th graders who do not drink water from the Chelsea water supply (it is assumed that the fluoridated water supply has already provided reduction in the amount of tooth decay, so that topical application would have little effect); all 8th graders (since the body stops assimilating fluoride at approximately 14 years of age); pre-schoolers, kindergartners and 2nd graders who have lived in Chelsea less than three years, and 5th graders who have lived here less than five years; and those recommended by their dentists, for obvious reasons.

Forms were sent to the parents of 2nd, 5th, and 8th graders last week outlining the program and enclosing enrollment forms. Although the exact date for the program has yet to be determined, Chelsea Jaycee Auxiliary members have requested a date two weeks following dismissal of school.

Each participant will be scheduled for four appointments, a day or more apart. Appointment times for those enrolled in the program will be mailed to parents two to three weeks prior to the scheduled appointment, with a 10-day grace period during which changes in appointments may be made. After this, no changes or refunds will be made.

Fee for the program is \$3.50 per child, with a special family plan of \$12 available for four or more children. Those interested in possible fee adjustments for financially-limited families should contact Mrs. Anne Steinaway at 475-2923 in the evenings.

Mrs. Steinaway is also the contact person for parents wishing to register pre-school age children for the program.

Michigan, which pioneered in the field of topical fluoride applications in 1949, leads the nation in the number of community programs in operation and in the number of children treated.

Last year, more than 60,000 children received applications in more than 300 clinics throughout the state.

The state-wide program is supervised by the Dental Division of the Michigan Board of Health, which oversees the operation through periodic visits to the various clinics by staff dentists.

Merit Finalists...

(Continued from page one)

for the Recreation Council. She will appear as a member of the singing-dancing chorus of the high school's production of "Mame," which opens in two weeks.

David Klemér, the son of Mr. and Mrs. Earl Klemér, has been accepted to the University of Michigan's College of Engineering, where he plans to major in bio-engineering.

In late January, he was announced as one of 300 high school seniors chosen for the honors group of the 33rd annual Westinghouse Science Talent Search for his exhibit, "Data Storage and Retrieval Using a Holographic Memory." His exhibit had previously been entered in the Southeastern Michigan Science Fair, winning several awards.

At Chelsea High school, David serves as president of the local chapter of the National Honor Society, and as a member of the high school band, as which he recently earned a first division rating in solo and ensemble competition for his tympani solo. He also teaches several drum students at Al Nalli Music.

David Heydlauff On Dean's Honor List at Ferris State

Among 1,481 Ferris State College students named to the winter quarter Academic Honors List was a Chelsea native, David G. Heydlauff.

To be named to the Academic Honors List, a student must earn at least a 3.25 average on a 4.0 basis and carry a full academic load of 14 credit hours.

SODIUM FLUORIDE APPLICATION FORM

Child's Name _____ (last) (first) (initial)

Dear Parent:

Sodium fluoride applied to the teeth to reduce the amount of new tooth decay, is now available through a community dental program. The treatment has no effect on decay already present and is not a substitute for regular care by your dentist, but is valuable for the partial control of dental decay.

If you wish your child to receive this service, please complete and return this form and fee right away to Mrs. Anne Steinaway, 2751 McKinley, Chelsea, Mich. 48118.

(Signature of parent or guardian)

(Mailing address)

(City)

(Zip Code)

Girl Scout Week



Scouting Is:
Growing...
Loving...
Caring...
Sharing...

Take a girl, any girl, and introduce her to the world of scouting. You'll see her grow into a strong individual with character. Her actions will speak louder than her words. She'll become actively involved in worthwhile projects... like improving the quality of her environment or doing volunteer work in her community. As she grows she learns... what loving, caring are all about.

This Advertisement Sponsored in the interest of Girl Scouting By

CHELSEA DRUG

"24-Hour Prescription Service"

101 N. Main St.

Phone 475-1611

TAILFEATHER CREATIONS

"Complete Yarn & Gift Shop"

103 N. Main

Phone 475-2512

J & M OIL CO.

"Distributors of Quality Petroleum Products"

682 W. Middle St.

Phone 475-8042

DOUG'S QUALITY SERVICE

500 N. Main St.

Phone 475-7038

SMITH'S SERVICE

1145 Jackson Rd.

Phone 475-8580



Hickory Ridge Farm Dairy

(Successor to Weinberg Dairy)

Stockbridge Mich.

Phone (517) 851-3000



Mr. and Mrs. N. H. Miles

Honored on 30th Anniversary

A surprise 30th wedding anniversary party was given at the Knights of Columbus Hall Saturday, March 9, to honor N. H. and Margaret Miles of St. Leo Church Rd.

Woman's Club Hears History of Early Kitchens

Woman's Club met Tuesday, March 12, in the Library Club Room, with 25 members and five guests present.

Following the regular business meeting, the group heard a program of "Kitchens of Long Ago," presented by Mrs. Mary Jo Miller. Mrs. Miller brought many examples of antique kitchen utensils from her extensive collection.

She explained to the group the use of each tool as well as its historical place in early American kitchens.

Hostesses for the evening were Mrs. David Colquhoun and Mrs. Robert German.

Guests were Mrs. Fran McCallum, Mrs. Sandy McClear, Mrs. Mary Jane Lehman, Mrs. Jane Barker, and Mrs. Ruth LaBarbara.

Magic Mirror Beauty Salon

Open Tuesday thru Friday
9 a.m. to 9 p.m.
Saturday, 8 a.m. to 3 p.m.

PHONE 665-0816

VILLAGE BEAUTY SALON

10' N. MAIN PHONE 475-1671

LORETTA

CHEYL - JANICE - CAROL - ARLENE - JANIE

OPEN TUESDAY THRU SATURDAY
Tuesday and Thursday Evenings



SWING INTO SPRING

Come see our beautiful new Spring Designs!

Brighten up your home for Spring with our green plants, blooming plants, fresh flowers, everlasting dried and silk arrangements. We're tops in design.

We have a nice selection of

- ★ SPRING POTTERY
- ★ TERRARIUMS
- ★ HANGING POTS, BASKETS

We also have a large selection of
Spring Candle Rings,
Shamrocks for St. Patrick's Day.

Have you visited the Green Thumb in our upper levels? Browsers are always welcome at

GAR-NETT'S
FLOWER & GIFT SHOP
1171 MAIN ST. PH. 475-1400

Annual Meet For Hospital Volunteers

The fourth annual meeting of the volunteers of the Chelsea Community Hospital was held Monday, March 4 at the hospital. Luncheon was served followed by a business meeting.

Those retiring from the board are Ann Wood, Marilyn Van Slambrouck and Joyce Gardner. Present board members are Florence Steger, president; Madeline Kusch, vice-president; Catherine Stalfan, secretary; Mary Turcott, treasurer; Roberta Barstow, Sally Dickinson, Agnes Guinan, Pauline Griffith, and Dorothy Miller.

Alice Tite, director of diversional therapy, reported that the 46 active volunteers had given 3,551 hours of service to the hospital, and the junior candy strippers 328 hours.

Sally Dickinson is working with Alice Tite on a daily craft program. The ministers in the area provide devotional services, and in addition, there is weekly bingo, movies, and a musical program.

The volunteers have also undertaken the furnishing of a child's room in the hospital.

Volunteers report that funds are constantly needed to defray the cost of the activities program, and contributions are greatly appreciated.

Spring Salad Luncheon Set For March 27

Members of the Women's Fellowship of the First Congregational church of Chelsea are "thinking spring" as they make final plans for their annual "Spring Salad Luncheon," to be held March 27, from 11 a.m. to 1:30 p.m.

Because of the success of previous years there will again be a separate men's dining room which will serve hot dishes as well as salads.

The Fellowship Room will be found with the tables loaded with baked items for sale.

Mrs. Carl Schwarm, general chairman of the event, announced that Mrs. Richard Smith would be the bake sale chairman, food committee chairmen are Mrs. Lewis Bernath, Mrs. Toivo Rihimaki, Mrs. Graham Sprague and Mrs. Walter Wolfgang. Women's dining room will be under the direction of Mrs. Clarence Vogel and Mrs. Lydia Penhalligon will be in charge of the men's dining room. Mrs. Larry Chapman is publicity chairman and Mrs. Howard Kern is ticket chairman.

This year the tickets will be limited to 300 people. Tickets should be purchased in advance with the deadline set at March 24.

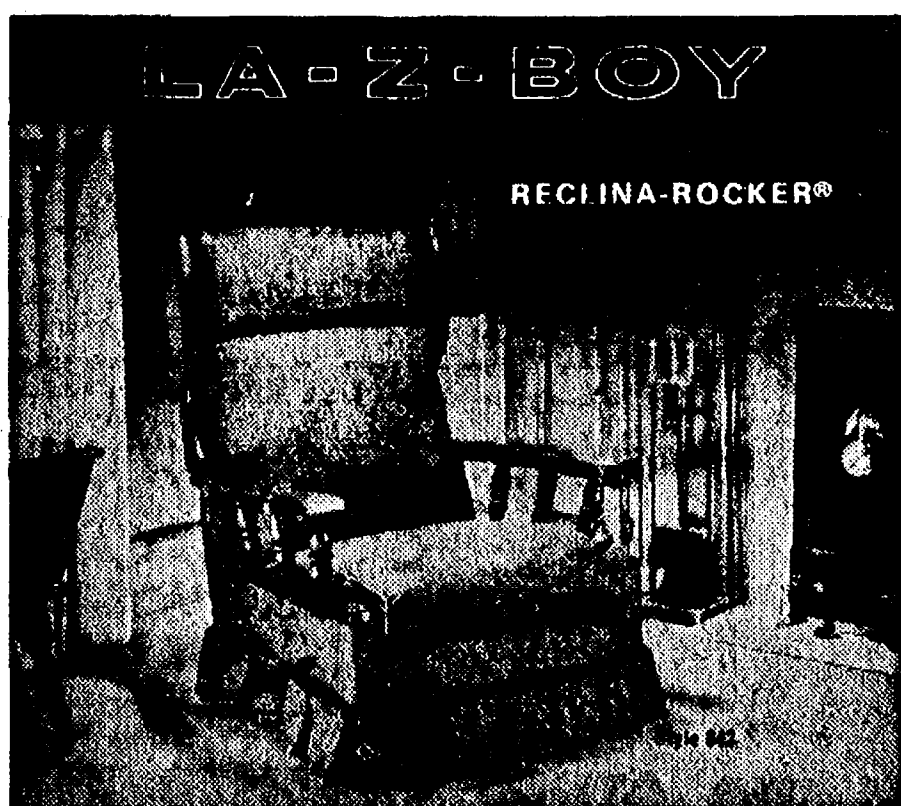
GIRI SCOUT NEWS



TROOP 899
Monday, March 11 is father-daughter night. Troop 899 will be putting on skits about first aid. After we finish first aid, we'll do badge work for one meeting. Sabrina Woodward, scribe.

Women who wait to see a doctor until late in pregnancy, or when they go into labor, run a greater risk of having premature or low-weight babies, according to the March of Dimes.

Telephone Your Club News
To 475-1371



This chair is destined to be sought after by every member of your family. The generous proportions are enhanced by the burnished dark pine finish of the wood accents. It is fully reclining. It's the rocker that doesn't look like a rocker. La-Z-Boy's exclusive Comfort Selector's three-position

leg-rest can be easily adjusted with or without reclining the chair. This gracious styling is certain to add charm and warmth to your home. A selection can be made from hundreds of attractive decorative colors and fabrics, most of them treated with Scotchgard fabric protection.



Merkel Home Furnishings
Open Mon. & Fri. Until 9 Ph. 475-8621

Modern Mothers Hear Program on Eye Diseases, Care

The cafeteria at the Chelsea Community Hospital was the meeting place for Modern Mothers Child Study Club on Tuesday, March 12 at 8 p.m. Kay Heller and June Flanigan became club members and the names of Sandle Mayer and Sally Wetzel were added to the waiting list.

"In-Focus," the program for the evening, was presented by Dr. William Hawks, an ophthalmologist at the Medical Center. Using a chalkboard, Dr. Hawks diagrammed and identified the various parts of the eye. He also diagrammed and discussed the development of the eyes in an unborn child. He stated that the eye is fully grown at the age of two but the eyes do not fully mature until the age of eight or nine. As an ophthalmologist he recommends and prefers to examine a child's eyes prior to entering school.

Dr. Hawks also had a series of slides illustrating various eye diseases and accidents caused to the eyes. He cautioned the group about the use of drain cleaners, etc., in the home which contain alkaline. Items with alkaline content are dreadfully damaging to the eyes and are too often kept within the reach of children or used by adults who are not aware of the damage caused upon contact with the eyes. Dr. Hawks stated that in cases such as the above the eye should be irrigated instantly with water or liquids to dilute the alkaline.

Many questions by club members were answered by Dr. Hawks concerning eye diseases and their symptoms. At the request of club members he also diagrammed on the chalkboard how a doctor enters the eye for surgical reasons.

Twenty-one members and five guests heard Dr. Hawks' presentation. Guests included Jane Lehmann, Jan Pratt, Janet Grenier, Ann Boone and Kim Ryan.

Following the program refreshments were served by co-hostesses Pat Wilson and Jan Otto.

VFW Auxiliary Will Elect Officers At April 8 Meet

Regular business meetings of the VFW Auxiliary was held, March 11, with 11 members in attendance.

Bessie Sharp was elected into membership and will be initiated at the next business session.

The group voted to purchase a flag for St. Mary's hall, and Mrs. Packard stated that a flag would be presented to the Trailusters 4-H group soon.

Four dollars was voted on in Ruby Sanders' name for the library at the National Home.

Mr. and Mrs. Mac Packard attended the sixth district meeting in Adrian March 10. Mrs. Packard gave a detailed report of the meeting.

A hospital council meeting is being held at Battle Creek Saturday, March 16. The 23rd annual Service Officers' conference will be held at the Olds Plaza, Lansing, April 6-7.

The following committee was appointed for the March 25 social meeting, to be held at 8 p.m. in the Post Home: chairman, Mary Kniss, assisted by Betty Smith, Lila Bohanna, and Janet Hutzler. At the April 8 meeting, election of officers and district delegates are to be elected. The parent organization will no longer be addressed as Department, it will now be known and addressed as State.

FRIED CODFISH TONGUES?

Fried codfish tongues are a delicacy in Newfoundland. Connoisseurs say they resemble scallops, but have a delicate flavor all their own.



25 YEARS in the Chelsea United Methodist Home was celebrated last month by Mrs. Christine Taggart, pictured above, who has been a resident of the home since Feb. 27, 1949. Mrs. Taggart, who has been a resident since the Rev. Matthew Betz served as administrator, enjoyed a unique celebration observing her birthday, and was honored with an anniversary gift cake. She has lived in the home longer than any other resident, past or present.

Curtis Nagel Travel Film Shows 'Portraits of Australia'

On Saturday evening, March 16, the Chelsea Kiwanis Club will present its fifth program of the "Travel and Adventure Series" at 8 p.m. in the Chelsea High school auditorium.

Curtis Nagel and William Moore have filmed in more than 70 countries of this interesting, colorful world; in fact, Curtis Nagel had the distinction of being one of the world's five most traveled men. He was a pioneer of color motion picture photography with the Technicolor Motion Picture Corp., when it was originally developed many years ago in Boston, Mass. He organized the first company producing travel-films in Technicolor, and personally produced more than 65 theatrical Technicolor Classics for Educational Films, 20th Century-Fox Films and Paramount Films.

In association with William Moore, another ace Hollywood cinematographer, he has literally photographed the world and its people. Their now famous "Colorlogues"—the trade name for their color travelogues—are presented yearly in more than 200 theatres, auditoriums and clubs across the United States, and Canada. With the finest and latest cameras and techniques, and with the addition of actual "on the spot" recordings, they have achieved the ultimate in travel-lecture film productions.

"Portraits of Australia"—from modern cities of Sydney, Melbourne and Brisbane to the "outback" which is an awesome desolate region, scarcely anywhere else has nature laid out such a diversity of visual wonder as in Australia. The wild life of Australia will also be on display in the film as we see the lovable koala bear, the kangaroos, the kookaburras and the duck-billed platypus.

A look at sports in Australia will also be a feature of the trip. The Melbourne Cup Race, greatest of society sporting events and a football match are exciting events along with surfing, skiing and swimming.

Of course, no trip to Australia would be complete without a visit to a sheepshearing station and one



CURTIS NAGEL

Beach School Seeks Items for Spring Carnival

Organizers of the Beach Middle school carnival planned for after school on April 26 are presently seeking items to be sold in one of the featured booths at the carnival, a "white elephant" booth.

Student members of the Carnival Club and the school's student council would welcome in particular books, comics, jewelry, or any other easily transported items.

To donate any such "white elephant" possibilities, contact Mrs. Gaiser at 475-2217, Mrs. Myers at 475-7228, or Mrs. Bareis at 475-2202. Arrangements will be made to pick up donations.

will be seen in operation near the city of Melbourne.

Film viewers will also partake in the pageantry of a Royal visit by Queen Elizabeth II and the Royal Family. These are all part of the memorable "Portraits of Australia."

Come In!
You're Invited!
meet and chat with
Marsha Starr



She will show you how easy
it is to make beautiful

UKRANIAN EGGS

Exclusive Appearance at Our Shop Only!
11:00 a.m. to 4:00 p.m.

SATURDAY, MARCH 23

COMPLETE KIT \$3.00 (Colors 100 eggs)

Other supplies available.



Tailfeather Creations
103 M. MAIN
CHELSEA
Phone 475-2512

Mayonnaise or Salad Dressing?
Have you ever wondered what the difference is between mayonnaise and salad dressing? Mayonnaise is a stable emulsion of oil droplets in water and it doesn't separate because it is stabilized with egg yolk. Salad dressing contains less oil and a cooked starch paste substitutes for part of the egg.

LUXURIES OF FLYING
I just flew in from New York on a jumbo jet. Everyone was wonderful — the stewardess, the pilot. We averaged over 800 miles per hour at 35,000 feet. But I was disappointed in the plane. This brand new plane cost millions and millions of dollars — you'd think that at least you could open a window.

THINK ABOUT IT

Jet Spray Carpet Cleaning

Phone John Lixey 761-3025 or 475-1509

YOUR
BANKAMERICARD
ACCEPTED

LAURA'S BEAUTY SALON

LAURA DOWNER, Owner - Formerly Tina's Beauty Salon
116 S. MAIN ST. PHONE 475-7677

LAURA - TINA - MADELINE - ANGIE

OPEN MONDAY THRU SATURDAY
9 a.m. to 5 p.m.
EVENINGS BY APPOINTMENT

When you know
it's for keeps



FAIR HAVEN
WED. RING
TRIPOLI
WED. RING
APOLLO
ALSO TO
Keepsake
REGISTERED DIAMOND RINGS

Love's perfect symbol is a Keepsake Diamond Ring... created in rich 14K gold and set with a perfect center engagement diamond. Choose yours today from our exciting new selection.

WINANS JEWELRY

Rings enlarged to show detail. Trade-Mark Reg.

SPECIAL

Men's All New Short Sleeve
SPORT SHIRTS
for Spring

1 Lot
Special at **\$3.44** Reg. \$4.99
Value

**SHOP FOR NEW
SPRING WEAR**

Big Selection

Men's - Ladies - Children's
WELL - KNOWN BRANDS

CLOSING OUT

ALL YARD GOODS
ZIPPER - THREAD
TAPES, ETC.

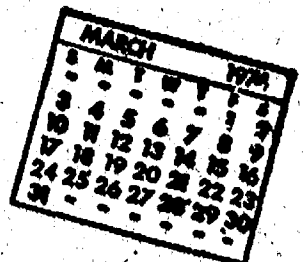
1/3 OFF

BASEMENT

DANCER'S

Chelsea's Friendly Dept. Store

Community Calendar



Rogers Corners Extension Study Group meeting, Tuesday, March 19, at home of Mrs. Erwin Wenk. Silent auction.

Spring salad luncheon, Congregational church, March 27, 11 a.m. to 1:30 p.m., mens dining room serving salads and hot dishes. Contact Mrs. Howard Kern, 475-8730 for tickets, \$2. Bake sale in Fellowship Room. adv40

North Lake Co-Op Nursery is accepting application for 1974-75 school year. For fun-loving 3- and 4-year-olds. Call 475-7031 or 475-7388 for information. adv45

Washtenaw County Medical Care Auxiliary meeting, Wednesday, March 20, 9:30 a.m., Juvenile Court Center, 2270 Platt Rd., Ann Arbor. Agenda: report of membership drive, discussion of mailing list. Visitors welcome.

Chelsea Band Boosters, Thursday, March 14, 8 p.m., high school band room.

Chelsea faculty vs. Dexter faculty this Friday, March 15, Chelsea High school gym. Biddy basketball teams before the game and at half-time. Admission: 50 cents per person, with a maximum of \$1 per family.

St. Patrick's Day roast beef dinner sponsored by Dexter Knights of Columbus Sunday, March 17, 11 a.m. to 4:30 p.m., St. Joseph school building, Dexter. \$3 adults, \$1.50 children under 12. Tickets at the door.

Special public school board meeting to discuss operational millage vote, Tuesday, March 19, 7:30-9:30 p.m., Chelsea High school cafeteria.

Due to fire, the American Legion hospital equipment records were destroyed. Anyone having equipment is kindly asked to call Pat Merkel at 475-1824.

One hot meal a day delivered to the home of elderly or disabled, seven days a week, to people living in the Chelsea area. For information call 475-8014 or 475-2923.

Inquiries regarding the Chelsea blood bank may be directed to Harold Jones in the event that Mrs. Dudley Holmes is unavailable, or to Mrs. Pauline McKenna, American Red Cross in Ann Arbor, 871-5300.

American Legion and Auxiliary hospital equipment available by contacting Pat Merkel at 475-1824.

Chelsea Camera Club, Tuesday, March 19, 7:30 p.m., Sylvan Township Hall. Program: pictures of Ireland by John Ford and Harold O'Neill. Guests welcome.

Annual meeting of Inverness Golf League, at the Clubhouse, Tuesday, March 19 at 7:30 p.m. All league matters for 1974 will be decided at this meeting. Members and those wishing to join should attend. Each team must be represented.

Chelsea Community Farm Bureau, Thursday, March 14, 7 p.m., at Sylvan Township Hall, pot-luck supper. Hosts: Mr. and Mrs. Roy Kalmbach, and Mr. and Mrs. Leon Sanderson.

Boy Scout Troop 425 paper drive, starting 9 a.m., Saturday, March 16. Drop papers at 118 E. Middle, or phone either 475-8064, 475-2355, or 475-2327 for pick-up.

Sylvan Township Board meeting the first Tuesday of the month, at 7 p.m., at Sylvan Township Hall.

Tickets for Chelsea High school's production of "Mame," March 21-23, on sale now at Chelsea High school board room during lunch hours; mail orders for "Tickets for Mame," Chelsea High school, Chelsea 48118, and enclose stamped, self-addressed envelope. Ticket prices: Thursday, March 21, \$2; Friday and Saturday, \$2.50. Make checks payable to Chelsea High school. xadv39

Monetary donations for Home Meal Service of Chelsea should be sent to Mrs. Helen Pearson, 725 W. Middle St.

Open meeting of Advisory Committee on the Status of Women, first and third Monday of every month, 7:45 p.m., room 117A Washtenaw County Building, corner of Huron and Main, Ann Arbor.

Pap tests are free for all area women, Tuesday mornings, at St. Joseph Mercy Hospital, Ann Arbor. Call American Cancer Society office, 668-8357 for appointment.

Senior Citizen Fun Nite every Friday evening at 7:30.

Parents Anonymous cares about parents who lose their cool with their children. Weekly meetings, no fees. Call Sandy, 475-7519.

Chelsea Co-op Nursery is now taking applications for 1974-75 classes for three- and four-year-olds, both mornings and afternoons, assist and non-assist. Anyone interested in receiving an application, call Phyllis Muncer, 475-1751.

DEATHS

Mrs. Ezra Heininger Dies Saturday at Area Nursing Home

Dorothy Heininger, of 2571 N. Lima Center Rd., died Saturday, March 9 at Cedar Knoll Rest Home. She was 89.

Born in Grass Lake township on April 10, 1884, she was the daughter of Henry and Lena Schweinfurth Notten. She married Ezra Heininger Oct. 10, 1922. He died Feb. 14, 1968.

She is survived by one daughter, Mrs. Alvin (Harriet) Wahr of Chelsea; two sisters, Mrs. Eva Dancer of Dexter, and Mrs. Katherine Clum of Hastings; one brother, Chester Notten of Grass Lake; three grandchildren; and several nieces and nephews.

Funeral services were conducted Tuesday, March 12, at 2 p.m. at the Burghardt Funeral Home by the Rev. James Stacey. Burial followed in Oak Grove Cemetery.

Miss Belle Blakeslee Was Practical Nurse Before Becoming Home Resident

Miss Belle O. Blakeslee, of the Chelsea United Methodist Home, died Tuesday, March 5, at the age of 81.

Born in Bell Oak, Oct. 25, 1892, she was the daughter of Alfred and Kate Pettingill Blakeslee.

For 32 years she worked as a practical nurse at Battle Creek Sanitarium. She also worked as a practical nurse at the Chelsea United Methodist Home before becoming a resident on Sept. 15, 1960.

She is survived by one niece, Mrs. Robert Hickman of Ypsilanti. Funeral services were conducted Thursday, March 7, at 3 p.m. at the Chelsea United Methodist Home chapel by the Rev. Richard L. Clemans. Burial followed in Oak Grove Cemetery.

Arrangements were by Staffan Funeral Home.

Mrs. E. Eiseman Dies Friday at Detroit Evangelical Home for Aged

Mrs. Laura J. Eisemann, formerly of Ann Arbor and Chelsea, died Friday, March 8 at the Evangelical Home for Children and the Aged of Detroit.

Born Aug. 4, 1895, in Scotts, she was the daughter of Sherman and Effie Weinberg Pierce. On Nov. 24, 1917, she was married to Jacob Hanselmann; he preceded her in death on Dec. 8, 1930. On May 16, 1936, she married Emanuel Eisemann; he preceded her in death on Feb. 4, 1967.

She was a member of St. Paul United Church of Christ. Surviving are two sons, Roy Hanselmann of Milan and Harold Hanselmann of Saline; three step-sons, Waldo and William Eisemann of Ann Arbor and Norman Eisemann of Chelsea; a step-daughter, Annette Vail of Chelsea; seven grandchildren; two great-grandchildren; nine step-grandchildren; and a brother, Nathan Pierce of Grass Lake.

She was preceded in death by a brother, Elmer Pierce. Funeral services were conducted on Monday, March 11 from the Bahnmiller Funeral Home in Saline, with the Rev. Stanley Hartman officiating. Burial followed in Forest Lawn Cemetery, Dexter. Memorial contributions may be made to the Evangelical Home for the Aged in Saline.

Biddy Wrestling (Continued from page one)

The program, scheduled for every Saturday from March 16 to April 20, will begin at 2 p.m. for a two-hour opening session this week in the high school gym.

Instructor Kerry Kargel has planned for this initial meeting a review of points awarded in scoring situation, and a general overview of stances, tie-ups, take-downs, escapes, and break-downs from top. Registration will take place at the first class session.

Americans 65 years old and over—already 20 million or one-tenth of the Nation's population—are increasing in numbers faster than the population as a whole.

Loren R. Turner

Former Electrical Contractor Dies Wednesday at Hospital

Loren Robert Turner, of 725 Howard Rd., died Wednesday, March 13, at the Chelsea Community Hospital. He was 77.

Born Aug. 2, in Grafton, O., he was the son of William L. and Elizabeth Turner. He married Lela Rank Oct. 26, 1916, in Lima, O. She preceded him in death on Nov. 27, 1973.

They moved to the Chelsea area in 1948, and he founded Turner Electric that year. He was a member of the First United Methodist church of Chelsea, Chelsea Olive Lodge No. 156, F&AM, the Wash County Consistory Club, the Scottish Rite Club of Detroit, and the Detroit Moslem Shrine. He was also a past president of the Washtenaw County Electrical Contractors Association, and past director of the Michigan chapter of the Electrical Contractors Association. He retired from active business in 1967.

Surviving are two sons, O. L. (Bud) of Atlanta, Ga., and Robert J. of Ann Arbor; a sister, Victoria Hearn, of Norwalk, O., and a brother, Chester, of Detroit.

Funeral services will be conducted Saturday, March 16, at 11 a.m. at the Burghardt Funeral Home by the Rev. Clive Dickinson. Burial will follow in Oak Grove Cemetery. Masonic memorial services will be conducted Friday at 8 p.m. Memorial contributions should be made to the First United Methodist church.

Mrs. Nancy Taylor

Former Pontiac Resident Dies at Methodist Home

Mrs. Nancy J. Taylor, a resident of the Chelsea United Methodist Home and formerly of Pontiac, died Friday, March 8, at the age of 89.

She is survived by four sons, Clark of Grosse Pointe Woods, Lawrence of Hillsdale, Lowell of Royal Oak, and Ralph of Los Angeles, Calif.

Funeral services were conducted Monday, March 11, at 10:30 a.m. at the United Methodist Home Chapel by the Rev. Dr. Milton Banks. Burial followed in Mt. Avon Cemetery, Rochester.

Arrangements were by Burghardt Funeral Home.

Alfred J. Walker

Had Operated Walker Store in Saline for Many Years

Alfred J. Walker, 209 Mills Rd., Saline, died Sunday, March 10, in St. Joseph Mercy Hospital in Ann Arbor at the age of 64.

Born Feb. 18, 1910, in Lodi township, he was the son of Fred and Amanda Goltz Walker.

On Sept. 14, 1935, he was married to Dorothy Schenk in Chelsea; she survives.

He was a member of St. Paul United Church of Christ of Saline. He and his wife, Dorothy, have owned and operated Walker's Store in Saline for a number of years.

In addition to his widow, survivors include two sisters, Mrs. Nora Heiber of Saline and Miss Edna Walker of Detroit; and several nieces, nephews, and cousins.

Funeral services were conducted on Wednesday, March 13, at 1:30 p.m. at the Bahnmiller Funeral Home in Saline. The Rev. Henry G. Kroehler officiated. Burial followed in Oakwood Cemetery, Saline.

Memorial contributions may be made to the Evangelical Home of Saline.

Frederick P. Walker

Retired Employee of Gas Co. Dies Wednesday

Frederick P. Walker, 8284 Huron St., Dexter, died Wednesday, March 13 at home after a lengthy illness.

Born March 27, 1897, in Sharon township, he was the son of Chales and Mary L. Trolz Walker.

He married Beatrice I. Ward Feb. 18, 1932 in Dexter. He was a resident of the Dexter area for the past 45 years.

He was a member of the Moose Lodge of Ann Arbor, No. 287. He was retired from Michigan Consolidated Gas Co.

He is survived by his widow; two sons, Russell F. of Manchester, and Charles W., serving with the United States Air Force in Arkansas; four daughters, Mrs. Frank (Betty) Lockhart of Belleville, Mrs. Mary Cook, of Belleville, Mrs. Ray (Joanne) Nicholson of Dexter, and Mrs. Jimmy (Shirley) Smith of Belleville; four brothers, Harry of Ann Arbor, John of Grass Lake, Martin of Jackson, and Thomas of Howell; two sisters, Mrs. Julius (Lina) Reule of Chelsea, and Mrs. Bill (Irene) Ball of Jackson; 10 grandchildren; one great-grandson; and several nieces and nephews.

He was preceded in death by three brothers and one sister.

Funeral services will be conducted Saturday, March 16, at 3 p.m. at Hosmer Funeral Home by the Rev. William D. Enslin of North Sharon Bible church, Chelsea. Burial will follow at Forest Lawn Cemetery.

Memorial contributions may be made to the American Cancer Society. Envelopes are available at Hosmer Funeral Home, where friends may call after noon Thursday.

Gunmen Rob Supermarket In Stockbridge

A pair of masked gunmen forced the owner of Spadafore's Village Food Store in Stockbridge to open the safe at his store Sunday night, and fled with some \$1,000 in cash and the owner's 1973 red Cadillac.

The two men, described as white and 23 to 24 years of age, wore ski masks, and were inside the home of Paul R. Spadafore when his wife and two children returned home after working at the store.

When Spadafore entered the home later, the men told him that his wife and children had been kidnapped and that he should do as they asked to prevent harm to them.

Spadafore rode with the two to his store, where they waited outside while he entered and removed the \$1,000 from a safe. The bandits then returned him to his home, tying his hands and feet. Spadafore freed himself shortly thereafter, but Ingham county Sheriff's deputies had found no suspects nor traces of Spadafore's car, as of Monday afternoon.

BIRTHS

A son, Dudley William, to Mr. and Mrs. William Snyder, on March 8 at St. Joseph Mercy Hospital, Ann Arbor. Maternal grandparents are Mr. and Mrs. Dudley Foster; paternal grandmother is Mrs. William Snyder of Grass Lake.

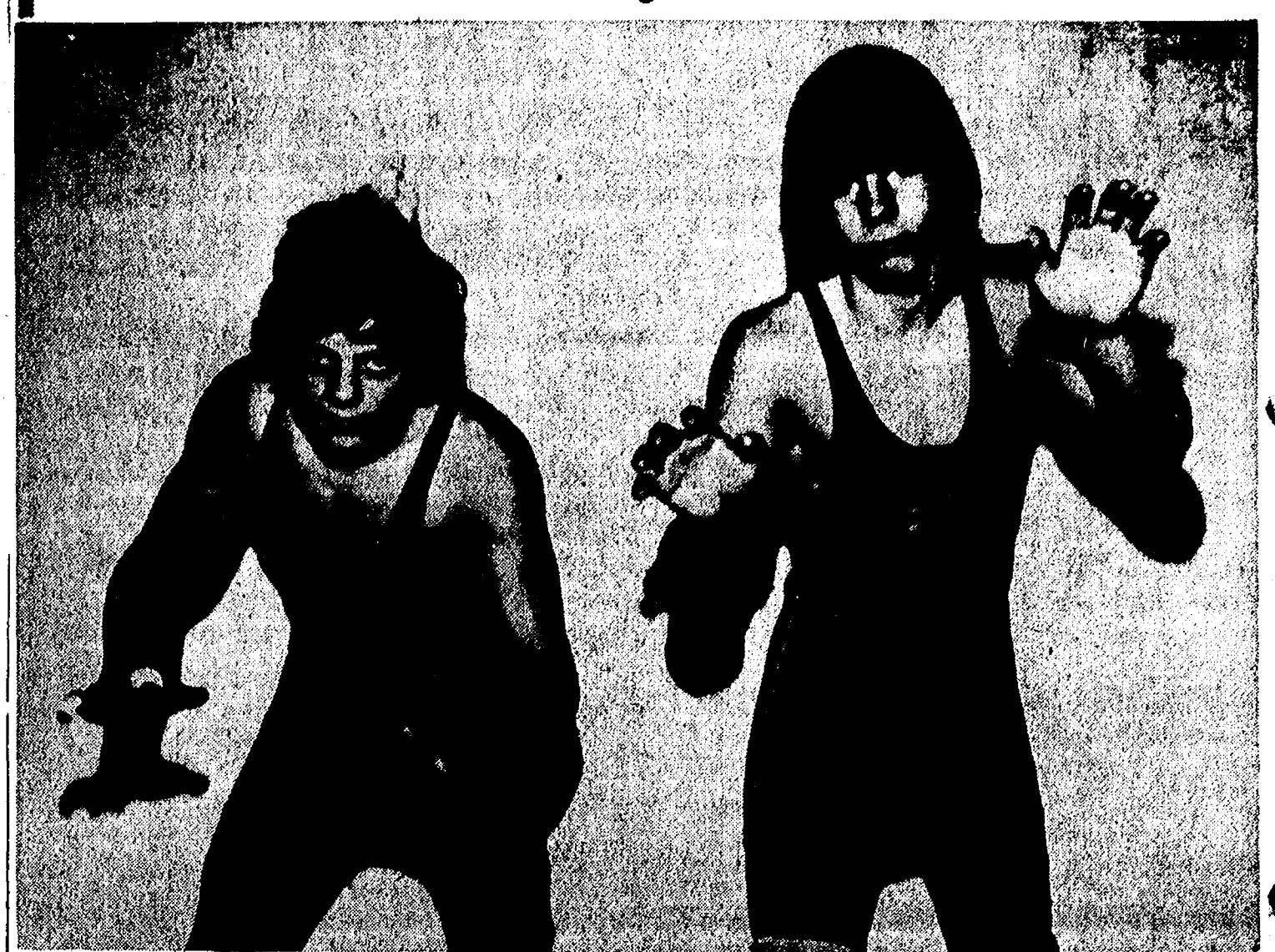
A son, Rodolfo Martinez, to Lourdes Garcia de Miz, and Rodolfo Martinez, 307 Madison St., on Monday, March 11, at St. Joseph Mercy Hospital, Ann Arbor.

A son, Jeffrey William, at St. Joseph Mercy Hospital in Ann Arbor, on March 7, to Mr. and Mrs. William Pearsall of 19431 Bush Rd. Maternal grandparents are Mr. and Mrs. Robert L. Bauer; paternal grandparents are Mr. and Mrs. Fred Pearsall.

MEAT MOST IMPORTANT

Meat quality is the most important consideration of food shoppers as a reason for selecting a particular grocery store, according to a research report involving Chicago area women. Among the other various factors looked for, in order of importance, are: produce quality, store appearance, efficient checkout and meat variety.

Wrestlers of the Week



DAVE KEISER (left) is a junior who wrestles at 132 pounds. In addition to competing in his third year of wrestling, he has also been active in baseball and football for Chelsea. He expects that Brighton will be the toughest competition in his Saturday's league meet at Saline, but thinks that "we have a good chance to win." The son of Mr. and Mrs. Robert Keiser, he has two brothers also on the wrestling squad, Nick and Ken, and two other brothers, Steve and Joe, and three sisters, Karen, Sandy and Missy.

MARK PENNINGTON (right) is a junior three-year man on the wrestling squad who took a championship in last week-end's junior varsity wrestling tournament by pinning all his opponents. He has wrestled all through junior high and managed an 8th grade team. He has also played football and baseball for Chelsea and enjoys "all sports." The treasurer of the high school Key Club, he plans to attend college and major in business administration. He is the son of Mr. and Mrs. Harold Pennington, and has two sisters, Julie and Meg, and three brothers, Steve, Tim and Dan.

Discussion Meeting Scheduled on School Needs

(Continued from page one)

same millage the state will provide approximately \$170,000 less in state aid to the Chelsea School District, while the increased assessments will provide \$170,000 in additional taxes. The dollar amount that increased assessments would raise with the same millage rate is thus entirely removed by a reduction in state aid for that same amount.

(Let it be assumed that the Bursley Bill has no redeeming qualities, it is designed to provide a basic support level for the education of children across the state—a level which some poorer

districts have previously been unable to maintain.)

Despite the good intentions of the bill, however, the fact remains, as Board President Howard Haselward stated last week, "the mechanics of the State Aid Act forced the decision to request additional millage."

In recognition of what is expected to be broad taxpayer concern over the proposed increase in operational millage, the Board of Education has planned a special public meeting next Tuesday, March 19, at 7:30 p.m. in the high school cafeteria to clarify the intermingled issues of the millage, the

Bursley Bill, and increased state equalized valuation.

Spring Forensics

(Continued from page one)

which are Larry Doll, Bill Kalmbach, Doug Schrotenboer, and Dan Leonard.

In the humorous reading category, Kathy Stoll placed first and Robin Schneider took second.

Serious reading was led by Jane Buxton in first place and Jeanne Thornton in second.

Winners in the story-telling category were Merry Hoffmeyer, first place, and Skip Foytik, second.

Hear Ye! Hear Ye! SPECIAL PUBLIC SCHOOL BOARD MEETING

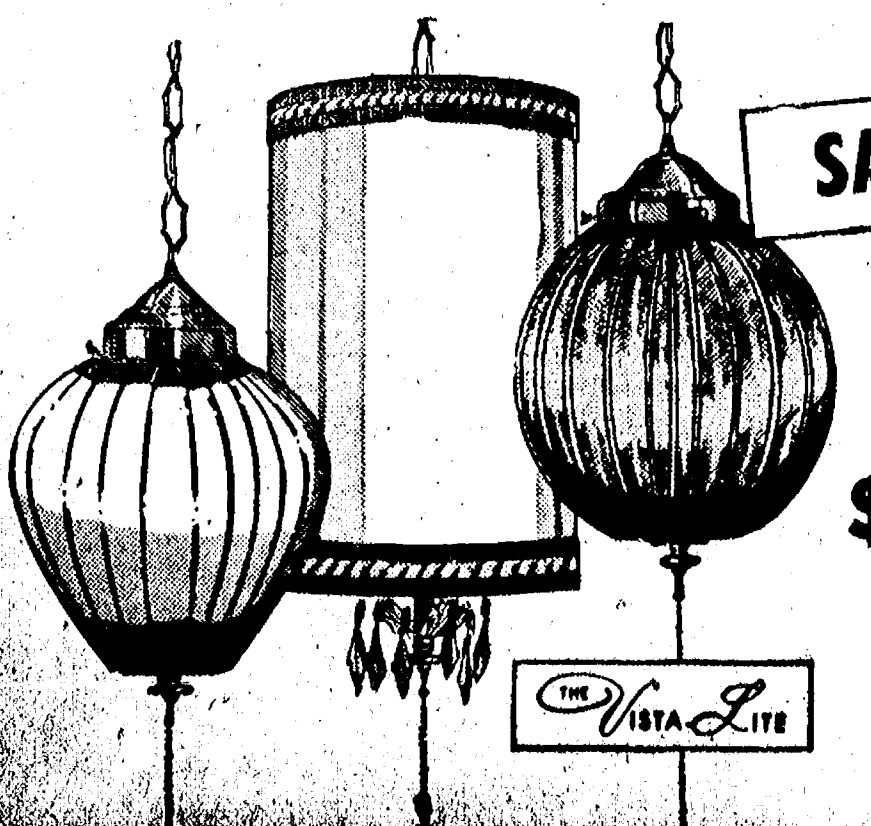
Tuesday, March 19
7:30 to 9 p.m.

HIGH SCHOOL CAFETERIA

To discuss the operational millage - particularly the impact of the new State Aid Act on school financing.

AT GAMBLES

Furniture Loft SPECIALS



SAVE NOW

QUALITY SWAG LAMPS
Prices Start at

\$12.00

Reg. \$16.95

Glass or fabric shade. Goldtone trim and chains. Hang them anywhere—simply plug them in.

87-3478, 48

NOW MORE THAN EVER BEFORE IT MAKES GOOD SENSE TO BUILD OR REMODEL!

NO INVESTMENT IS A BETTER HEDGE AGAINST INFLATION THAN THE INVESTMENT YOU MAKE IN YOUR HOME — DURING THE PAST 40 YEARS ANY FAMILY THAT POSTPONED BUILDING TO WAIT FOR LOWER PRICES — HAS BEEN THE LOSER —

BE A WINNER! — BUILD IN '74 — WITH CHELSEA LUMBER'S "OWNER-BUILDER DEAL":

- COMPLETE, PRICED MATERIAL LIST
- LIST OF ALL ROUGH-OPENING SIZES
- KITCHEN PLAN WITH CABINET - LAYOUT DRAWING
- FREE DELIVERY OF ALL MATERIALS

(ALL DELIVERIES TIMED WITH YOUR NEEDS — FOR CONVENIENCE AND SECURITY!)

- FULL CREDIT FOR RETURNS — AND,
- CHARGE-ACCOUNT CONVENIENCE AT —

CASH - N - CARRY PRICES
(WE'LL OPEN A CHARGE ACCOUNT FOR YOU... JUST PAY AT THE MIDDLE AND END OF EACH MONTH)

NO OTHER SUPPLIER IN THE AREA OFFERS AS MUCH!

Pick-a-plan

of a house you can build this season

- ★ VISIT OUR PLAN-BOOK LIBRARY
- ★ HUNDREDS OF NEW DESIGNS
- ★ PRICES FOR COMPLETE BLUEPRINTS START

At \$10.50 Per Set

(When part of four-set order)

GO CHELSEA LUMBER

WHEN YOU BUILD!



1101 M-52, Chelsea OPEN: 9 to 9 Daily
Corner of M-52 and Old US-12 10 to 6 Sunday

DON'T BLAME US

FOR HIGH FOOD PRICES-WE'RE KEEPING THEM AS LOW AS WE CAN!

HERE'S PROOF

Polly's U.S.D.A. Choice Steak Sale!

SIRLOIN . . . lb. \$1.48
T-BONE . . . lb. \$1.68
PORTERHOUSE lb. \$1.88

POLLY'S EXTRA SPECIAL STEAK FEATURE!

USDA Choice His & Her Steak
Tailless PORTERHOUSE &
Tailless T-BONE STEAK

Only **\$1.98 lb.**

KNEIP'S LEAN BONELESS (2 to 3-LB. AVG.)

CORNEB BEEF . . . Round Cut \$1.49 lb. Brisket Cut **\$1.29**

SWIFT'S PREMIUM EXTRA FANCY

CORNEB BEEF lb. **\$1.89**

FARMER PEET'S

SMOKIE LINKS 12-Oz. Pkg. **89¢**

USDA GOVT. INSPECTED YOUNG TOM 16 to 20 Lb. Avg. **\$59¢**

TURKEYS . . . **\$59¢**

HYGRADE'S CENTER CUT RIB SMOKED

PORK CHOPS lb. **\$1.29**

HYGRADE'S CENTER CUT LOIN SMOKED

PORK CHOPS lb. **\$1.39**

HYGRADE'S CONEY ISLAND

FRANKS 12-Oz. Pkg. **69¢**

FARMER PEET'S FINEST PERSONAL SLICED

BACON 12-Oz. Pkg. **89¢**

1/4 PORK LOIN SLICED INTO

PORK CHOPS lb. **99¢**

ARMOUR'S JET NET BONELESS

LEG-O-PORK Whole or Half **\$1.39**

HERRUD'S SEMI BONELESS OLE VIRGINIE

SMOKED HAM 1/2 Lb. Sliced Whole or Half Cut **\$1.09**

FRESH GROUND ALL-BEEF

HAMBURG 3 Lbs. or more **98¢**

ARMOUR STAR LEAN FANCY

CANNED HAM 3-Lb. Can **\$4.59**

HYGRADE'S PORTER SLICED

BACON ENDS 3-Lb. Box **\$1.69**

SWIFT'S PREMIUM ALL MEAT

FRANKS lb. **98¢**

SWIFT'S PREMIUM ALL MEAT CHUNK

BOLOGNA . . . lb. **88¢**

SEAFOOD SPECIALS!

TURBOT FILLETS . . . lb. 79¢
SEATROUT STEAKS . . . lb. 89¢
WHITE FISH . . . lb. \$1.29
FILLET OF SOLE . . . lb. \$1.59
LAKE PERCH FILLETS . . . lb. \$1.99
JUMBO FROG LEGS . . . lb. \$2.99
PETITE LOBSTER TAILS lb. \$2.99
FANCY SCALLOPS . . . lb. \$2.99

ECKRICH SPECIALS!

Reg. or Thick Sliced
BOLOGNA . . . lb. \$1.29
SMORGAS PAC . . . lb. \$1.49
All-Meat
FUN FRANKS . . . lb. \$1.14
PICKLE LOAF, 8-oz. pkg. 69¢
OLIVE LOAF, 8-oz. pkg. 69¢
MACARONI & CHEESE LOAF, 8-oz. pkg. 69¢
PLAIN LOAF, 8-oz. pkg. 69¢

DELI SPECIALS!

Polly's Homemade
Submarine Sandwiches . . . 69¢
Eckrich Smoked or
Polish Sausage . . . lb. \$1.49
BAKED BEANS, lb. . . . 65¢
MACARONI SALAD, lb. 65¢
1/2 Lb. Sliced
HOT PEPPER CHEESE . . . 89¢

BEEF BUNDLE

2 lbs. Round or Sirloin Steak
2 lbs. Rib or Club Steak
2 lbs. Soup Bone
3 lbs. Beef Chuck Roast
3 lbs. Meaty Short Ribs
3 lbs. Hamburg
Total Weight
15 lbs. **\$14.99**

FREEZER SPECIAL!

USDA Choice Trimmed Beef Loins
consisting of Sirloin, Porterhouse,
T-Bone Steaks, Ground Sirloin or
Beef Stew, Cut, Wrapped & Frozen,
just as you like.
Average weight
45 to 55 lbs. **\$1.29 lb.**

LOW, LOW MONEY-SAVING SPECIALS!

BODINE'S BREAKFAST

ORANGE DRINK . . . Gal. **79¢**

CARNATION

COFFEE MATE . . . 16-Oz. **89¢**

CARNATION 6 PAK

INSTANT BREAKFAST . . . **69¢**

CARNATION

INSTANT MILK . . . 10 Qt. Pkg. **\$1.79**

KIMBIE OVERNITE DISPOSABLE

DIAPERS . . . 12 Ct. **99¢**

KIMBIE DAYTIME DISPOSABLE

DIAPERS . . . 24 Ct. **\$1.49**

NABISCO

OREOS . . . 19-Oz. **69¢**

RAGU MIX FOR

SLOPPY JOES . . . 14.5-Oz. Jar **39¢**

HANDI - WRAP 200-Ft. Roll **2 for 99¢**

SWEETHEART LIQUID

LIME DETERGENT . . . 32-Oz. **49¢**

HEFTY LARGE

WASTE BAGS . . . 20 Ct. **59¢**

SCOT LAD LIGHT CHUNK

TUNA FISH . . . 6.5-Oz. **44¢**

NESTLE'S

QUIK . . . 2-Lb. Box **69¢**

FOR YOUR DISHWASHER

FINISH . . . 33-Oz. **49¢**

PUREX BLEACH . . . 1/2-Gal. **25¢**

DRANO . . . 12-Oz. Can **39¢**

SAU-SEA

SHRIMP COCKTAIL 8.75-Oz. **\$1.25**

SEALTEST

WHIPPING CREAM . . . 1/2 Pt. **38¢**

BORDEN'S

ICE MILK . . . Gal. **99¢**

BORDEN'S

FUDGE BARS . . . 12-Pak **49¢**

SHARP CHEDDAR

CHEESE BALLS . . . 7-Oz. **93¢**

FROZEN FOOD SPECIALS!

PET RITZ

PIE . . . **39¢**

SHELLS, 2 pak, 9" **\$1.09**

RHODE'S

WHITE BREAD, 5 pak . . . **1.09**

RFAMES

EGG NOODLES, 8 oz. **39¢**

AUNT JEMIMA

BUTTERMILK WAFFLES, 10 oz. **49¢**

SARA LEE

POUND CAKE, 12 oz. **89¢**

QUEEN OF SCOT ROUND

BREADED SHRIMP, 2 lbs. **\$3.99**

16-OZ. SCOT LAD

PURE PAK STRAWBERRIES . . . **39¢**

QUEEN OF SCOT

BRUSSEL SPROUTS, 20 oz. **69¢**

FRESHER BY FAR PRODUCE!

Firm Fresh Crisp

PASCAL CELERY

stalk **29¢**

Garden Fresh

CABBAGE

lb. **13¢**

Florida Sweet

PINK or WHITE GRAPEFRUIT

4 for **39¢**

Garden Fresh

CARROTS

2 1-Lb. Cello Bags **29¢**

Sweet juicy

FLORIDA ORANGES

Doz. **69¢**

Honey Dew or Spanish

MELONS

ea. **99¢**

clip n' Save
with these coupons!



Ads

Taken
Till 1 p.m.
Tuesday

USE ACTION-PACKED WANT ADS

Just
Phone
475-1371

WANT ADS

The Chelsea Standard

WANT AD RATES

PAID IN ADVANCE—All regular advertisements, 75 cents for 25 words or less, each insertion. Count each figure as a word. For more than 25 words add 3 cents per word for each insertion. Blind ads or box number ads, 50 cents per insertion. CHARGE RATES—Same as cash in advance, with 25 cents bookkeeping charge per ad before 1 p.m. Tuesday preceding publication. Pay in advance, send cash or stamps and save 25 cents. DISPLAY WANT ADS—Rate, \$1.40 per column inch, single column width only. 5-point and 10-point type only. No letters or boldface type. Minimum 1 inch. CARDS OF THANKS or MEMORIALS—Same as regular ads, 75 cents per insertion for 25 words or less; 1 cent per word beyond 25 words. COPY DEADLINE—1 p.m. Tuesday week of publication.

"HILLTOP"

PLUMBING, HEATING & ELECTRICAL CONTRACTING
Robert Shears, Master Plumber
NO JOB TOO LARGE
OR TOO SMALL
1414 S. Main St., Chelsea
475-2949 x204

FORMAL WEAR RENTAL SERVICE

From - Weddings - Special Events
6 different colors.

Foster's Men's Wear

CAR & TRUCK LEASING. For details see Lyle Christwell at Palmer Motor Sales, 475-1301. 401

Custom Built Homes

O-hi We Remodel too.
O-can count on us
N-o Job Too Small.
T-rim Inside & Out
R-ough-in Only If
Y-o want to Finish
\$-iding Aluminum, 5" Gutters
I-mmediate Attention
D-ALE COOK & CO.
E-imates, Free

BUILDERS

Please Call
475-8863

DALE COOK

17H

ROAD GRADING

Complete maintenance.

G. MILLER

Ph. 426-4564, evenings.

PUBLIC SCHOOL BOARD MEETING to discuss operational millage election, Tuesday, March 19, 7:30 p.m., Chelsea High school cafeteria. 39

FARM HOUSE for rent. Modern conveniences. Security deposit required. In Grass Lake (313) 837-1988. x39

WILL DO BABYSITTING in my home, days. Phone 475-1453. x39

'68 FORD half-ton pickup, V-8, automatic, and many extras. Good condition. 475-1498, evenings. 39

WANT ADS

CALL NOW SAVE \$\$\$

Greenwood

for
Siding - Remodeling
FREE ESTIMATES
Call
Chelsea 475-2400 x21f

FOR RENT—Fair Service Center for meetings, parties, wedding receptions, etc. Weekdays or weekends. Contact John Weinitz, phone 475-1518. x31f

CHELSEA SCHOOLS

EASY ACCESS to Recreation—Cozy starter home with many recreational advantages—access to North Lake, across from golf club, and near Pinckney Recreation Area.

JUST LISTED—If this home's credentials sound good to you, call us immediately—it won't be on the market long. 3 bedrooms formal dining room, basement, 2-car garage, appliances included and backyard patio. Good asking price.

JUST LISTED—Another home that is sure to sell quickly. 4 bedrooms, dining room, family room, walk-out basement, 1 1/2 baths. Close to schools and 2 mi. from I-94.

WATERFRONT—Rustic year-round home on North Lake. A 4-bedroom home on over 3 wooded acres. Fireplace, walk-out basement, and spacious front porch for relaxation and enjoyment in the summer months.

SHARP BILLEVEL—4 bedrooms, dining room, family room, 2 1/2 baths, 2-car garage. Spacious home with extras. Call us!

Building Sites

1 acre—rolling, with trees.
2 acres—wooded, beautiful.
3 plus acres—with stream.
10 acres and up—your choice, or many.

ROBERT H.

THORNTON

JR. PC

REALTOR

323 S. Main St., Chelsea 475-8628
5640 Jackson Rd., Ann Arbor 769-5950

Bob Riemenschneider 475-1469
Mark McKernan 475-8424
John Pierson 475-2064
Helen Lancaster 475-1198
Bob Thornton 475-8857 x39

WEBER HOMES

Opens New Model

in

NOAH HEIGHTS

Near Half Moon Lake

Drive out and see. Country beautiful.

Model open Saturday and Sunday, 1-4 p.m.

Office phone: 475-2828

Model Home Phone: 475-1958 x39

PAPER DRIVE—Boy Scout Troop 425, starting 9 a.m., Saturday, March 16, drop papers at 117 E. Middle, or phone 475-8064, 475-2855, or 475-2827 for pickup. 39

WANTED TO BUY—Early model Ford tractor. Any condition. Ph. 475-2288. x40

WANT ADS

KNAPP SHOES

For Cushion Comfort

Robert Robbins

475-7282

SPECIAL—Ceramic tile bath, 4 ft. x 4 ft., 4 ft. high. Materials and labor, \$189. Call 1-488-4615. x39

SMALL CAR

HEADQUARTERS

SPECIAL

\$350 CAR SALE

'66 FORD Galaxie 500 XL - No. 4011A.

'65 FORD Galaxie 500. No. 4-658A.

'68 FORD Custom 500 4-door - No. 2-1911B.

'69 FORD LTD, 4-door - No. 3-1401A.

'68 PONTIAC Catalina, 2-door - No. 3-636A.

'68 CHRYSLER Newport, 4-door - No. 4-039C.

'66 PONTIAC Tempest, 2-door - No. 4-547AA.

'68 FORD Custom 500 4-door - No. 00-1700A.

'69 FORD LTD Country Squire wagon - No. 4-448A.

MUST BE SOLD

FIRST COME, FIRST SERVED

All cars worth at least \$350—some worth much more.

WE BUY USED CARS

HENDERSON FORD

Ann Arbor's Oldest Ford Dealer

3480 Jackson Rd., Ann Arbor 769-7900

OPEN 9 TIL 9 MON-FRI. x39

Special of the Week

1972 Ford LTD 2-dr. hardtop

Air conditioned

9,300 miles.

\$2500

USED CARS

1973 BUICK Riviera, air cond. \$4600

1973 OLDSMOBILE 98 Regency 4-dr. hardtop, air cond. \$3800

1973 CHEVROLET Impala 4-dr. hardtop, air cond. \$2600

1973 BUICK LeSabre 2-dr. hardtop, air cond. \$2900

1971 FORD LTD 2-dr. hardtop, air cond. \$1600

1970 VOLKSWAGEN square back station wagon \$1500

1969 CHEVROLET Chevelle 2-dr. hardtop \$1000

1968 BUICK Sportwagon, air cond. \$600

1968 OLDSMOBILE Delmont 88 4-dr. \$700

1968 MERCURY Monterey 4-dr. air cond. \$700

1968 BUICK Electra 225 2-dr. hardtop, air cond. \$800

1968 BUICK Electra 225 2-dr. convertible \$700

1966 OLDSMOBILE Delmont 88 4-dr. hardtop, air cond. \$400

1969 BUICK LeSabre 4-dr. hardtop, air cond. \$800

SPRAGUE

Buick-Olds-Opel, Inc.

Phone 475-8664

1500 S. Main St., Chelsea 89tf

REAL ESTATE

ROOMY 3-BEDROOM HOME—Formal dining room, family room with fireplace. Aluminum siding, basement, gas heat, 2-car garage. Terms.

BUILDING SITE—1.1 acres with trees. Beautiful view of North Lake. A great spot for your dream home.

1974 SELECT O STITCH, \$48.75—Small paint damage in shipment. In walnut sew table. Sewing machine. No attachments needed. All controls are built in the table. Buttonholes, sew on buttons, and makes fancy designs. Only \$48.75 cash or terms.

Public School Board Meeting to discuss operational millage election, Tuesday, March 19, 7:30 p.m., Chelsea High school cafeteria. 39

1974 SELECT O STITCH, \$48.75—Small paint damage in shipment. In walnut sew table. Sewing machine. No attachments needed. All controls are built in the table. Buttonholes, sew on buttons, and makes fancy designs. Only \$48.75 cash or terms.

Public School Board Meeting to discuss operational millage election, Tuesday, March 19, 7:30 p.m., Chelsea High school cafeteria. 39

1974 SELECT O STITCH, \$48.75—Small paint damage in shipment. In walnut sew table. Sewing machine. No attachments needed. All controls are built in the table. Buttonholes, sew on buttons, and makes fancy designs. Only \$48.75 cash or terms.

Public School Board Meeting to discuss operational millage election, Tuesday, March 19, 7:30 p.m., Chelsea High school cafeteria. 39

1974 SELECT O STITCH, \$48.75—Small paint damage in shipment. In walnut sew table. Sewing machine. No attachments needed. All controls are built in the table. Buttonholes, sew on buttons, and makes fancy designs. Only \$48.75 cash or terms.

Public School Board Meeting to discuss operational millage election, Tuesday, March 19, 7:30 p.m., Chelsea High school cafeteria. 39

1974 SELECT O STITCH, \$48.75—Small paint damage in shipment. In walnut sew table. Sewing machine. No attachments needed. All controls are built in the table. Buttonholes, sew on buttons, and makes fancy designs. Only \$48.75 cash or terms.

Public School Board Meeting to discuss operational millage election, Tuesday, March 19, 7:30 p.m., Chelsea High school cafeteria. 39

1974 SELECT O STITCH, \$48.75—Small paint damage in shipment. In walnut sew table. Sewing machine. No attachments needed. All controls are built in the table. Buttonholes, sew on buttons, and makes fancy designs. Only \$48.75 cash or terms.

Public School Board Meeting to discuss operational millage election, Tuesday, March 19, 7:30 p.m., Chelsea High school cafeteria. 39

1974 SELECT O STITCH, \$48.75—Small paint damage in shipment. In walnut sew table. Sewing machine. No attachments needed. All controls are built in the table. Buttonholes, sew on buttons, and makes fancy designs. Only \$48.75 cash or terms.

Public School Board Meeting to discuss operational millage election, Tuesday, March 19, 7:30 p.m., Chelsea High school cafeteria. 39

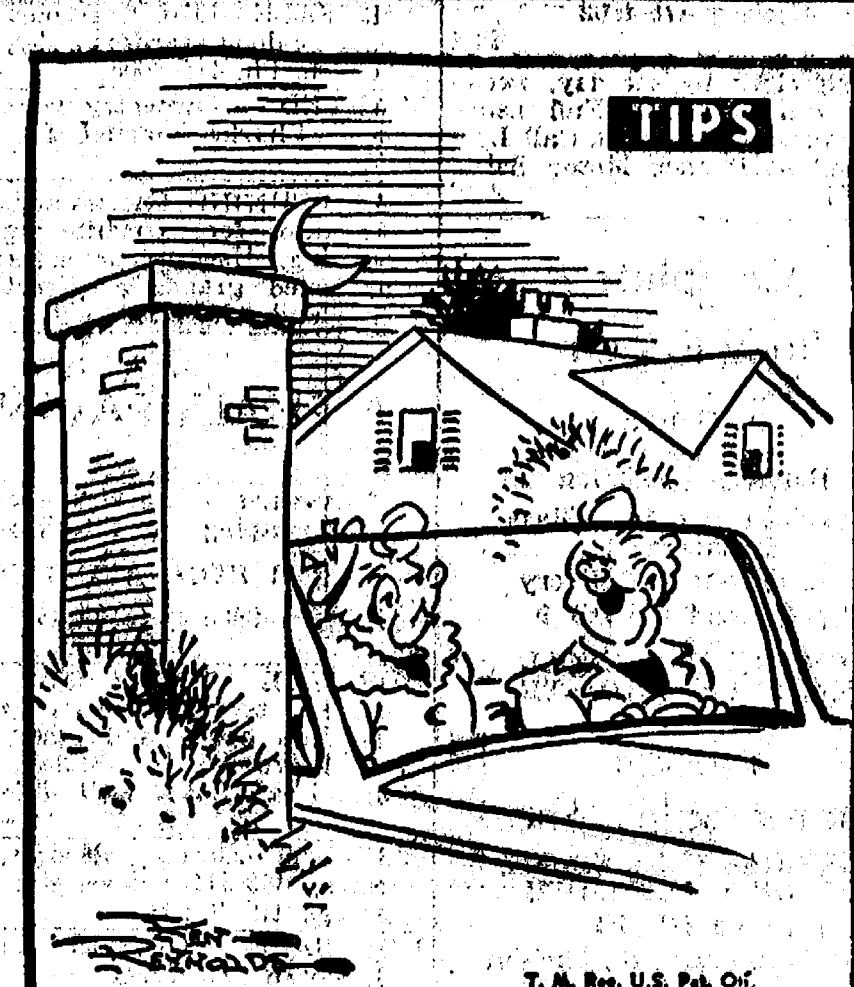
1974 SELECT O STITCH, \$48.75—Small paint damage in shipment. In walnut sew table. Sewing machine. No attachments needed. All controls are built in the table. Buttonholes, sew on buttons, and makes fancy designs. Only \$48.75 cash or terms.

Public School Board Meeting to discuss operational millage election, Tuesday, March 19, 7:30 p.m., Chelsea High school cafeteria. 39

1974 SELECT O STITCH, \$48.75—Small paint damage in shipment. In walnut sew table. Sewing machine. No attachments needed. All controls are built in the table. Buttonholes, sew on buttons, and makes fancy designs. Only \$48.75 cash or terms.

Public School Board Meeting to discuss operational millage election, Tuesday, March 19, 7:30 p.m., Chelsea High school cafeteria. 39

1974 SELECT O STITCH, \$48.75—Small paint damage in shipment. In walnut sew table. Sewing machine. No attachments needed. All controls are built in the table. Buttonholes, sew on buttons, and makes fancy designs. Only \$48.75 cash or terms.



"When I got this in the Standard Want Ads - Alvin thought I was getting a riding lawn mower!"

WANT ADS

13 ACRES with flowing stream. Terms.

List your property with us for fast, efficient service.

R. D. MILLER

REAL ESTATE

Real Estate Broker

475-7311

15775 Cavanaugh Lake Rd.

Chelsea, Mich.

EVELYN WHITE

475-7551 x21f

SNOWMOBILE TRAILERS, 1111 and swing, \$139.95. Snowmobile sleds, \$39.95. Two-piece snowmobile suits, regular \$79.95, special \$49.95. Snowmobile boots, regular \$18.95, children's \$9.95. Ladies, \$9.95. Men's, \$9.95. Coffman's Sport Center, 1011 Lansing Rd., Jackson. Open 9-9 daily, Sundays, 12-6. x23tf

HOUSE FOR SALE—Brick, 3 bedrooms, 1 1/2 baths, more than 2,100 sq. ft. with garage. 800 Book. Ph. 475-8911. x29tf

INVERNESS

GOLF COURSE

LOT

FOR SALE

Will Build

To Suit

WEBER HOMES

475-2828 x39

LAKE FRONT

200 FT. on Michigan Center Lake. 38'x16' living room with beautiful fireplace, dining room, breakfast room, 4 bedrooms, 2 baths, 2-car garage, aluminum siding, ideal home for large family. \$88,000.

LARGE BEAUTIFUL wooded lot. Pine trees. Close to I-94, right to Gillett's Lake. Land contract available, \$500 down.

Kira Henry

Real Estate

(517) 764-1410 anytime x39

McCulloch

Chain Saws.

WE SELL, SERVICE, SHARPEN AND TRADE.

Chelsea Hardware

MOBILE HOMES, new and used for rent with option to buy. Country Mobile Homes, 2499 E. Michigan, Ypsilanti, 484-7101. x39

Windows, Screens,

Screen Doors Repaired

Plexiglass, window glass, aluminum, fiberglass and galvanized screen.

Chelsea Hardware

Ph. 475-1121

PIANO TUNING and repair. Call Ray Bushnell, 824-3501. x304

WANT ADS

CLOGGED

SEWER

Reynolds Sewer

Service

We Clean Sewers Without Digging

Drains Cleaned Electrically

FREE ESTIMATES

2-YEAR GUARANTEE

Phone Ann Arbor NO 2-5277

"Sewer Cleaning Is Our Business—Not a Side Line!" 88tf

NEW '73s

SELLING

at

DEALER COST

'73 DODGE D-200 Camper Special.

'73 DODGE D-100 Club Cab.

Quality Used Cars

'73 CHEVY Nova coupe, 350, auto., p.s., AM-PM, radials, low mileage \$2895

'73 PONTIAC Catalina 4-dr. sedan. Sheriff patrol car. V-8, auto., p.s., p.b., air cond., radial tires, economical transportation \$1495

'72 MERCURY 4-dr. sedan, Sheriff patrol car, V-8, auto., p.s., p.b., air cond. \$1195

'72 CHEVY 3/4-ton pickup, 4-wheel dr., 350, auto., p.s., p.b., dual tanks, camper package, new tires, low mileage \$2995

'68 CHEVY 1/2-ton, 6-cyl., 3-speed, low mileage \$895

'72 DODGE D-200 pickup, V-8, auto., p.s., p.b., air cond., camper special, low mileage \$2895

'71 DUSTER Twister, 318, 3-speed, rallye wheels, black and sharp \$1895

'71 DODGE B-200 Sportsman wagon, 318, auto., p.s., low mileage, and sharp \$2495

'69 ROADRUNNER, 383, auto., p.s. \$695

'69 CHRYSLER 4-dr. sedan, V-8, auto., p.s., p.b., air cond. \$1295

'69 BUICK Sport Wagon, V-8, auto., p.s., p.b., air cond. \$1295

'68 PONTIAC Catalina 2-dr. hardtop, V-8, auto., p.s. Good transportation \$895

'67 FORD Econoline Van, 6-cyl., 3-speed \$495

'66 DODGE Coronet 2-dr. hardtop, 318, auto. \$195

'66 COMET 4-dr. sedan, 289, 3-speed, very clean \$395

'66 BUICK LeSabre, 4-dr. sedan. Good transportation \$495

Village

Motor Sales, Inc.

IMPERIAL - CHRYSLER

DODGE - PLYMOUTH

Phone 475-8661

1185 Manchester Rd., Chelsea

Hours: 8 a.m. to 8 p.m.

Tues

WANT ADS

Automotive Rust Proofing Cars and Trucks

Village Motor Sales, Inc.
IMPERIAL - CHRYSLER
DODGE - PLYMOUTH
Phone 475-8661
1185 Manchester Rd., Chelsea
Hours: 8 a.m. to 6 p.m.
Tues. thru Fri. Until 9 Monday.
9 a.m. to 2 p.m. Saturday

SECURITY GUARDS

Chelsea, Manchester
Whitmore Lake areas.
Phone 761-5315
for appointment,
or apply at
290 S. Wagner Rd.
Ann Arbor
SANFORD SECURITY SERVICE,
INC.

YOUNG

We list and sell lake, country and town properties. Eugene Young, Real Estate & Builder, 878-3792, 11586 Dexter-Pinckney Rd., Pinckney 48169.

PITTSBURGH PAINTS

for that
Quality Finish
Chelsea Hardware
Ph. 475-1121

Roofing, Aluminum
& Vinyl Siding
Gutters, Storms
& Window Trim

For Free Estimate
Call (517) 851-8657

Mills Construction Co.
3986 M-52, Stockbridge

VIETNAM VETERANS DAY DANCE

Friday, March 29
9 p.m. to 1 a.m.

American Legion Hall
Cavanaugh Lake
LUNCH SERVED
\$5.00 per couple.

Tickets available at
Chelsea Lumber or Strieter's

Sponsored By
American Legion Post 31

WANT ADS

LEHMAN WAHL
Land Appraisal
Residential
and Farm

17037 West Austin Rd.
Manchester, Mich.
Area Code 313
428-8886

CALL FRANK for all your carpet cleaning jobs, morning or week-end. Needs only 3 hours to dry. Only 10¢ per square foot. Phone now for free estimate, 761-4328. All work guaranteed.

Fireplace Builder

Field stone mason, block and brick mason, tuck pointing.
FREE ESTIMATES
Call 475-8025 after 8 p.m.

Patrick Grammatico

HAMMOND ORGAN teachers wanted to teach in their own homes. Call Grinnell Brothers, Ann Arbor. 662-5687.
REDUCE excess fluids with Fluidex, \$1.89. Lose weight with Dex-A-Diet capsules, \$1.98 at Chelsea Drug.

ST. PATRICK'S DAY DANCE

Sponsored by
Chelsea Rod & Gun Club
Saturday, March 16

Music by
The Lake Valley Trio
Snacks - Set-Ups - Ice
and Lunch furnished,
\$7.00 per couple.

For tickets and information
contact Roger Davis
or Gary Bentley.

VACANT LAND

Desirably located, about 10 miles from Chelsea. Five 10-acre parcels at \$1,000 per acre, and a very special 20-acre parcel. Survey just completed. Excellent terms.

Willis Real Estate
Grass Lake, Mich.
(517) 522-8481
(517) 522-8834

\$100 REWARD

For information leading to recovery of records and contents of safe stolen Sunday night, March 10, from Jenkins Equipment Co., Dexter.

Call 426-3961

No questions asked.

FARMALL TRACTOR, Model BN, 2-row mounted cultivator. Runs good, \$450. Farmall F-20 on rubber, need carb and manifold, \$150. 12 h.p. elevator engine, \$45. Copymate copying machine, \$25. Call Stockbridge 851-8627 before 2 p.m. or week-ends.
UNFINISHED 4-bedroom quad-level. Excellent location north of Stockbridge on 5 acres on M-52. \$36,800. Real Estate One of Washtenaw, Realtors at 475-8693.

WANT ADS

NOW Full Time Complete Body Shop Service

Stop in For An Estimate

PALMER FORD

223 S. Main St.
475-1301

FOR SALE—Clover seed. Germination tested. 426-8602.

CUSTOM BUILDING

LICENSED & INSURED
FREE ESTIMATES

TOTAL CONSTRUCTION SERVICES

—Residential, commercial and industrial
—Garages
—Remodeling - Additions
—Aluminum Siding
—Roofing
—Trenching

SLOCUM CONTRACTORS & BUILDERS
Serving Washtenaw County
For Over 20 years
20700 OLD US-12
CHELSEA
Phone 475-8821 or 475-7611

Pine Haven Saddlery

4534 Dexter Townhall Rd.
Phone Dexter 426-4268

Complete line of English and Western equipment. 10% discount to all 4-H Club members.

Store Hours: Mon.-Sat., 9-9
Sunday, 10-9

NEW AND REMODELING Residential Carpenter Contractor

M. A. LAWRENCE

1-517-522-4364

BUILDERS—House and barn roofing, all types of roof repairs, aluminum storm windows and doors, aluminum siding and gutters, awnings, porch enclosures, garage and room additions, cement work. Call Joe Hayes for free estimates, Manchester 428-3520.
SEAMLESS ALUMINUM Eaves-troughs installed and guaranteed. White and colors available. For free estimates call Rick Kleinschmidt, R. D. Kleinschmidt Co., 428-8836.

Sand Gravel

KLINK EXCAVATING

Bulldozer - Backhoe
Road Work - Basements
Trucking - Crane Work
Top Soil - Demolition
Drainfield - Septic Tank
Trenching, 5' up

Industrial, Residential, Commercial
CALL 475-7681

Headquarters for

RED WING WORK SHOES

Foster's Men's Wear

MUNITH AUCTION—100 Main St.
Munith, Mich. Auction every
Sunday, 6 p.m. Danny Fleming,
auctioneer.

STOCKBRIDGE, 18 acres, commercial, on M-52. (517) 851-8144.

Fry Cook Wanted

11 a.m. to 5 p.m.
See Mrs. McMillan at

Chelsea Restaurant

from 8:30 a.m. - 1:30 p.m.,
or after 5 p.m.

BABY CHICKS—We are now taking orders for baby chicks, delivery about April 1st. We will also have chick brooders, feeders, starter, grower feed, etc. Cole's Elevator Co., Inc., Gregory, Ph. (313) 498-2735.

FOR SALE—1969 Blazer with 4-wheel drive, 307 engine, 48,000 miles. Call after 4:30, 475-2179.

WANT ADS

Gem Travel Trailers and Campers

PICK UP COVERS

4' ————— \$100.00
26' ————— \$179.00 and up

Triangle Sales

Chelsea 475-4802

CAR RENTAL by the day, week-end, week or month. Full insurance coverage, low rates. Call Lyle Christwell at Palmer Motor Sales, 475-1301.

Complete Body Repair Service
Bumping - Painting
Windshield and Side Glass Replacement
Free Pick-up & Delivery
Open Monday Until 9
CONTACT DON KNOLL
FOR FREE ESTIMATE

Village Motor Sales, Inc.
IMPERIAL - CHRYSLER
DODGE - PLYMOUTH
Phone 475-8661

Hours: 8 a.m. to 6 p.m.
Tues. thru Fri. Until 9 Monday.
9 a.m. to 2 p.m. Saturday

FOR REAL DOLLAR SAVINGS be sure and see us before you buy any new or used car. Palmer Motor Sales, Inc. Your Ford Dealer for over 60 years.

DEPENDABLE TREE SERVICE—Cutting and removing. Call 428-4110.

GIACINTO DRYWALL CO.—Licensed contractor, winter prices now in effect. Free estimates. Ph. 878-3901.

FOR RENT—American Legion Hall. \$50. Call 475-1824.

SHOES FOR REPAIR picked up and delivered every Saturday at Parish's Cleaners, 118 Park St., Chelsea, Mich.

FIREPLACE WOOD for sale. Good, long-burning hardwood. \$25 face cord, delivered and stacked. 475-1505.

PAPER DRIVE—Boy Scout Troop 425, starting 9 a.m., Saturday, March 16. Drop papers at 117 E. Middle, or phone 475-8064, 475-2855, or 475-4327 for pickup.

D&G Allen Excavating

Septic Tanks and Drainfields

Back Hoe and Dozing

Sand, Gravel and Topsoil Hauled

Phone (517) 851-8886
or (517) 851-8278

OFFICE SPACE for rent, Merkel Home Furnishings, Ph. 475-8621.

FIREWOOD for sale. \$15 per cord. Easy access. Ph. 475-8357.

FARM LAND for rent — 3750 Schmitz Rd. Call 475-7231 or 428-9762 evenings.

HELP WANTED—Nurses aides, first shift, 7 a.m. to 3 p.m. Please call 475-8633, Mrs. Dehn.

WEDDING INVITATIONS—Traditional and modern. Social and business stationery. John's Shop. Call 475-7500 after 5 and week-ends.

BUILDING SITE—Individual wants 2 to 10-acre building site for new home in Chelsea-Manchester area. (1) 689-0396.

SIX SALESPeOPLE, ONE MANAGER

Wholesale pick-up, retail delivery, average 25% profit income.

Call Mr. Niles
475-2964

SKIN DISORDERS? Try Tocoderm Vitamin E cream, 1260 IV per tube at Chelsea Drug.

WANTED TO RENT—2 or 3-bedroom house or apartment, Stockbridge school area preferred. Modern, unfurnished. Phone Gregory 408-2552.

WANTED TO RENT—Chelsea school district, 2 bedroom-plus house, apartment or duplex, any time before June 20. Will lease. Ph. 475-8192.

1-BEDROOM HOUSE for sale — Near Lake, \$18,000. Call between 5-9 p.m. weekdays, 475-7396.

DEL YOUNG EXCAVATING—All types excavating. Ph. 683-1660.

SPECIAL late season price on sunflower seed and bird feeds. Cole's Elevator Co., Inc., Gregory, Ph. (313) 498-2735.

FREE TO GOOD HOME—10-month-old, part cocker, part terrier. Good watchdog, good with children. Ph. 475-7284.

WANT ADS

ELECTRICAL WIRING of all types New and rewiring. Ph. 428-4855.
EVINGER REAL ESTATE, Alpine St., Dexter. Phone 426-9518.

SEE US for transit mixed concrete. Klumpff Bros. Gravel Co. Phone Chelsea 475-2530, 4920 Love-land Rd., Grass Lake, Mich. x401

TRAVEL TRAILERS—18-ft. and up; 10885 ft. trailers. John R. Jones Trailer Sales, Gregory, Mich. Phone 498-2655.

FOR SALE—1970 Chevrolet Impala, 4-door hardtop, excellent condition. Ph. 475-8005.

WANTED—Carpentry work, any type. Charles Romine, Ph. 475-7474.

PIANO TUNING, Chelsea and area. Facilities for reconditioning and rebuilding. Used piano sales; reconditioned and verticals. E. Ecklund. 426-4429.

ASPHALT PAVING

Driveways - Parking Areas
Landscaping - Site Work
PREVO EXCAVATING CO.

(517) 851-8603 or (313) 453-1027

FOR SALE—Indian cents, post-cards, books, foreign coins, Australian opals, and other articles. Lawrence E. Guinan, 1571 Sugar Loaf Lake. Call 475-2817.

ABC cycle insurance, all sizes, best rates. 683-4477, days, 428-4056, evenings till 9 p.m.

FOR SALE—1966 Buick Electra, \$325. Ph. 475-9234.

BASE OF LIVING in the Village of Chelsea. One-year-old tri-level with all the extras and room for central air, large family room and large study could be used for 4th bedroom. \$47,900. Real Estate One of Washtenaw, Realtors at 475-8693.

FANTASTIC—Remodeled farm house, 5-bedroom, fireplace, family room, dining room, with barn and garage on 5 acres backing up to state land. 10 minutes north of Chelsea. \$82,000. Real Estate One of Washtenaw, Realtors at 475-8693.

DEXTER SCHOOLS—Vacant land, \$9,250 for 2 1/2 acres. Main road, rural neighborhood. Land contract available. Real Estate One of Washtenaw, Realtors at 475-8693.

FOR SALE—16-ft. travel trailer. Sleeps four. Very good condition. \$700. Ph. 475-8739.

FOR RENT—Country duplex. Dexter area. 2 bedrooms, separate dining room. Clean, quiet, comfortable. Couple preferred. References and deposit. \$140. 426-4056.

FOR SALE BY OWNER—Neat, older 5-room home in Chelsea. Aluminum siding, garage, many extras. Walking distance to South school and shopping. Call 475-7355 for appointment.

FOR SALE—2,000 books: hard-backs, 3 for \$1; paperbacks, 5 for \$1. 1,000 LP's, \$1 each or 3 for \$2. Also miscellaneous. Saturday only. 13225 E. US-12, Chelsea.

FOR SALE—'68 Chevy Nova, 307 auto. p.s. Runs good, body rough. \$350. 498-2312, Gregory, after 6:30 p.m.

FOR SALE—Alaskan Malamute, female, five years old. Used to children. Reasonable. \$25. Phone 426-3359.

FOR SALE—Gun collection, used and antique guns. Also, dining room outfit, black naugahyde couch, black vinyl reclining chair, walnut bedroom outfit, woman's 1/4 carat diamond engagement ring. Ph. 426-2334.

HAY FOR SALE—Possible delivery. Call after 5 p.m., 475-2988.

CLEAN CARPETS the safe and safe way with Blue Lustre. Rent electric shampooer, \$1. Dancer's.

FOR SALE—Bronze 30-inch electric stove. Kenmore self-cleaning oven. Like new. \$125. 426-8855.

10 ACRES on Waterloo Rd., available for soybean planting on one-third share. If interested call Livonia 261-1661.

FOR SALE—Apollo skis and poles, boots and bindings, size 9. Ph. 475-7501; after 6 p.m., 475-1969.

NO FUEL SHORTAGE. No price increases, hiding daily. Sharon Hills Ranch. Ph. 428-7558.

POOL TABLE, Fisher, 7-ft., slate bed, with all accessories. Excellent condition. \$300. Ph. 475-8933.

QUARTER HORSE for sale. 475-2017, after 12 noon.

KIRBY CLEANER, \$42.50 with all cleaning tools. Comes with special attachments to shampoo. Only \$42.50 cash or terms arranged. Trades accepted. Better hurry on this one. Call Ypsilanti collect, 482-8597, 9 a.m. to 9 p.m. Electro Grand.

Cards of Thanks

CARD OF THANKS
I would like to thank all my friends and relatives for the lovely cards and plants which I received while I was in St. Joseph Mercy Hospital. Your kindness was greatly appreciated.

Mrs. Richard Bauer

Card of Thanks

CARD OF THANKS
I wish to thank my relatives, friends and neighbors for their visits, cards, flowers and telephone calls while I was in the Chelsea Medical Hospital, and since my return home. Everything was very much appreciated.
Anita Eschelbach.

CARD OF THANKS
We wish to express our appreciation to all our friends, neighbors, and relatives for the flowers, memorials, food and cards. Also, we would like to thank those who contributed toward the dinner and preparation at St. Mary's. The family of Zita Hafner

Consumer Panel To Discuss, Vote on Product Preference

If you've ever wished someone would ask you for your ideas and preferences for food products and services, here's your chance! You are invited to participate in a Consumer Preference Panel, Thursday, March 28 at 1 or 7:30 p.m. in the Community Room at the Briarwood Shopping Center.

The panels are part of a co-ordinated, state-wide activity of the Consumer Marketing Program of Michigan State University's Co-operative Extension Service. Consumers are given the opportunity to evaluate and record their individual preferences for six to eight different products. Each panel session is identical and the products tested are the same across the state.

Purpose of the panel is threefold. (1) Michigan food producers and marketing firms need research information on consumers' attitudes and preferences toward food products, packaging, processing methods and services. (2) Michigan's Consumer Marketing Agents need information about the Michigan consumers with and for whom they work. (3) Consumers need to be aware of the changes occurring in the food industry and the problems facing Michigan food marketing firms.

Helen Fairman, Washtenaw County Extension Home economist who arranged to have two panels in Ann Arbor this year believes consumers will enjoy the experience which takes about two hours. Because there will be taste tests, a take-home product and some other "specials" advanced reservations are necessary. Call the Co-operative Extension Service, 663-7511 extension 227 and request a reservation form. Limit is 75 per session and reservations will be honored in the order received. Deadline is March 18. The panels are free and open to all.

Telephone Your Club News
To 475-1371

The Chelsea Standard, Thursday, March 14, 1974

from HISTORY'S SCRAPBOOK

DATES AND EVENTS FROM YESTERYEARS
Maine became the 23rd state admitted to the Union on March 15, 1820.
The U. S. Military Academy at West Point, New York, was authorized to be established by Congress on March 16, 1802.
Anna Eleanor Roosevelt was married to Franklin Delano Roosevelt on March 17, 1905.
March 18, 1837, was the birth date of Grover Cleveland, 22nd and 24th President of the United States.
March 19 is the date the swallows return to San Juan Capistrano Mission in California.
Harriet Beecher Stowe's story, "Uncle Tom's Cabin," was first published on March 20, 1852.



TODAY'S THOUGHT

By LOUIS BURGHARDT

Did you ever try to define brotherhood? . . . This poem by an unknown author does it real well . . .

"Just a little bit more interest - In other folks' welfare . . . Just a little greater showing - That really you do care . . . Just a little more kindness - To those you meet each day, And a little greater effort - To aid them on their way . . . Just a little more determined - To do the best you can - To help some other fellow - And prove a friend to man . . . Just a little bit more sunshine - Along life's weary road, Just a little bit more ready - To ease another's load . . . Just to work a little harder - For other people's good - And to show a bit more friendship - My friend, that's brotherhood . . ."

The definition shows the need for faith in man, without which there can be little faith in God. Without faith there can be no fraternalism. Without fraternalism here is no brotherhood . . . Quite simple, isn't it? . . . BURGHARDT FUNERAL HOME, 214 East Middle St., Chelsea, Mich. Phone 475-1551.

SPECIALS

ECKRICH
Slicing Bologna . . . lb. 97c

12-OZ. PKG. PAULY'S INDIVIDUALLY WRAPPED
Sliced Cheese 83c

46-OZ. CAN HI-C ASSORTED
Fruit Drinks 35c

PKG. OF 6 KELLOGG'S
Pop - Tarts 43c

32-OZ. PALMOLIVE
Liquid Detergent 64c

KUSTERER'S FOOD MARKET

DIAL 475-2721

WE DELIVER



SAVINGS IDEAS FOR YOU

FROM

CHELSEA STATE BANK

SAVE FUEL

Keep air humidified. Properly humidified air can actually be cooler than dry air; and you'll still feel comfortable.

SAVE GASOLINE

Don't drive with your foot on the gas pedal. This habit not only handicaps your gas mileage; but also the mileage you get out of a set of brakes.

SAVE MONEY

Doing it yourself can save a lot of money. See a Chelsea State Banker about a home improvement loan.



35 1/2 CUSTOMER HOURS
Mon.-Thurs. 9-3
Fri. 9-5:30
Sat. 9-12

305 S. MAIN

Ph. 475-1355

USED CARS

AT OUR TRIANGLE LOT
M-52 and Old Manchester Road

||
||
||

+ Services in Our Churches +

FIRST UNITED METHODIST CHURCH
The Rev. Clive Dickins, Pastor
Thursday, March 14—
1:00 p.m.—Executive Committee of United Methodist Women, home of Mrs. David Luick.
Saturday, March 16—
10:00 a.m.—Cherub Choir.
10:30 a.m.—Junior Choir.
12:00 noon—Older Adult Group will meet in the social center.
Tuesday, March 19—
1:00 p.m.—Prayer Study Group in the Crippen Building.
7:30 p.m.—Wesleyan Circle at home of Mrs. Irene Proctor.
Wednesday, March 20—
9:00 a.m.—Sarah Circle, home of Mrs. Shirley Snyder.
1:00 p.m.—Ruth Circle, social center of the church.
1:00 p.m.—Phoebe Circle, home of Mrs. Thomas Smith.
6:15 p.m.—Pot-luck.
7:00 p.m.—Program.
8:00 p.m.—Activities.
Thursday, March 21—
12:30 p.m.—Elizabeth Circle, home of Mrs. Max Plank.

ST. MARY CATHOLIC CHURCH
The Rev. Fr. David Philip Dupuis, Pastor
Mass Schedule
Every Sunday—
4:00-5:00 p.m.—Confessions.
7:00 p.m.—Mass.
Immediately after 7 p.m. Mass—Confession.
Every Sunday—
Winter schedule
8:00, 10:00, 12:00 noon—Mass.
Summer schedule
7:00, 9:00, 11:00 a.m.—Mass.

CONGREGATIONAL CHURCH
(United Church of Christ)
The Rev. Carl Schwarm, Pastor
Saturday, March 16—
9:00 a.m.—Presentation Sunday practice.
9:30 a.m.—Bake sale at Gambles.
Senior Pilgrim Fellowship.
Sunday, March 17—
10:00 a.m.—Sunday school.
11:00 a.m.—Worship service. Presentation Sunday.
Coffee Hour—Christian Education.
Monday, March 18—
7:00 p.m.—Church council.
7:30 p.m.—Choir.
Wednesday, March 20—
7:30 p.m.—Lenten service.

ST. BARNABAS EPISCOPAL CHURCH
20550 Old US-12
The Rev. C. Walton Fitch, Vicar
Telephone 426-8815
Every Sunday—
9:15 a.m.—Holy communion, first, third, and fifth Sundays.
9:15 a.m.—Morning Prayer, second and fourth Sundays.
9:30 a.m.—Sunday school.
10:15 a.m.—Choir rehearsal.

IMMANUEL BIBLE CHURCH
145 E. Summit St.
The Rev. LeRoy Johnson, Pastor
Every Sunday—
9:45 a.m.—Sunday school, nursery provided.
11:00 a.m.—Morning worship, nursery provided.
7:30 p.m.—Family hour, prayer meeting and Bible study.
First Sunday of Month—
7:00 p.m.—Communion service.
10:00 a.m.—Sunday school.

ST. PAUL UNITED CHURCH OF CHRIST
The Rev. John Rinehart, Interim Pastor
Thursday, March 14—
1:30 p.m.—Prayer Group.
3:30 p.m.—AA-J Association Executive Board.
Saturday, March 16—
No Confirmation classes.
10:00 a.m.-3:00 p.m.—AA-J Association Stewardship workshop at Clinton Congregational United Church of Christ.
Sunday, March 17—
9:00 a.m.—Church school.
9:00 a.m.—Adult Communication Class.
10:30 a.m.—Worship service.
4:00 p.m.—AA-J Association super teen rally, Pinckney Community Congregational church.

ZION LUTHERAN CHURCH
Corner of Fletcher, Waters Rds. (Rogers Corners)
The Rev. John R. Morris, Pastor
Thursday, March 14—
4:00 p.m.—Eighth grade youth instruction.
Saturday, March 16—
9:00 a.m.—Ninth grade youth instruction.
Sunday, March 17—
9:00 a.m.—Sunday School.
9:00 a.m.—Adult Inquirers Class.
10:15 a.m.—Worship.
7:00 p.m.—Adult Fellowship, "Holy Land" slides and fellowship.
Tuesday, March 19—
10:00 a.m.—Sewing day.
12:00 noon—Pot-luck.
Wednesday, March 20—
6:30 p.m.—Junior Choir, Senior Choir following.
7:30 p.m.—Fourth Lenten devotional.
Thursday, March 21—
4:00 p.m.—Eighth grade youth instruction.

ST. THOMAS EVANGELICAL LUTHERAN
Ellsworth and Haab Rds.
The Rev. Daniel L. Mattson, Pastor
Sunday, March 17—
9:45 a.m.—Sunday school and Bible class.
11:00 a.m.—Worship with Holy Communion.
Wednesday, March 20—
10:00 a.m.—Women's Bible Study.
8:00 p.m.—Lenten service (St. John's guests).
9:00 p.m.—Choir.
Thursday, March 21—
8:00 p.m.—Men's Bible Study.

NORTH SHARON BIBLE CHURCH
Sylvan and Washburne Rds.
The Rev. William Enslin, Pastor
Every Sunday—
10:00 a.m.—Sunday school. (Nursery will be available.) Junior church classes.
11:00 a.m.—Worship service.
6:00 p.m.—Senior High Youth meeting. Youth Choir.
7:00 p.m.—Evening worship services. (Nursery available.)
Every Wednesday—
7:00 p.m.—Bible study and prayer meeting. (Nursery available.)
Bus transportation available: 428-7222.

FIRST UNITED PRESBYTERIAN CHURCH
Unadilla
The Rev. T. H. Liang
Every Sunday—
9:45 a.m.—Sunday school.
11:00 a.m.—Worship service.

CHURCH OF CHRIST
13681 Old US-12, East
David A. Rushlow
Every Sunday—
10:00 a.m.—Church school.
11:00 a.m.—Worship service.
Nursery will be available.
6:00 p.m.—Worship service.
Every Wednesday—
7:30 p.m.—Bible Study.

ST. JOHN'S (UNITED CHURCH OF CHRIST)
Rogers Corners
The Rev. Richard Campbell, Pastor
Every Sunday—
9:30 a.m.—Sunday school.
10:30 a.m.—Worship service.

BETHEL EVANGELICAL AND REFORMED CHURCH
(United Church of Christ)
Freedom Township
The Rev. Roman A. Reineck
Every Sunday—
10:00 a.m.—Worship.

CHELSEA BAPTIST CHURCH
337 Wilkinson
The Rev. James Stacey, Pastor
Every Sunday—
9:45 a.m.—Sunday school.
11:00 a.m.—Worship service.
Nursery care available during all services.
6:00 p.m.—Junior and Senior Baptist Youth Fellowship.
7:00 p.m.—Evening service.
Every Wednesday—
7:00 p.m.—Bible study and prayer meeting.

OUR SAVIOR LUTHERAN CHURCH
The Rev. William H. Keller, Pastor
1515 S. Main, Chelsea
Each Sunday—
9:00 a.m.—Sunday school.
9:00 a.m.—Adult Bible class.
10:30 a.m.—Worship service.

GREGORY BAPTIST CHURCH
The Rev. Grant Lapham, Pastor
Every Sunday—
10:00 a.m.—Worship.
10:00 a.m.—Sunday school.
7:30 p.m.—Evening worship service.

WATERLOO FIRST UNITED METHODIST
Parks and Territorial Rds.
The Rev. Altha Barnes, Pastor
Every Sunday—
9:15 a.m.—Morning worship.

BAHA'I FIRESIDE
Every Thursday—
8:00 p.m.—At the home of Toby Peterson, 705 S. Main St. Anyone wishing to learn about the Baha'i faith is welcome.

NORTH LAKE UNITED METHODIST CHURCH
The Rev. J. William Fodd, Pastor
Every Sunday—
9:45 a.m.—Worship service.
11:00 a.m.—Sunday school. Nursery available.
Every Wednesday—
4:00 p.m.—Children's Choir.
7:00 p.m.—Adult Choir.

ST. JACOB EVANGELICAL LUTHERAN CHURCH
12501 Riethmiller Rd., Grass Lake
The Rev. Andrew Bloom, Pastor
Every Sunday—
9:00 a.m.—Worship service.
10:15 a.m.—Divine services.

SALEM GROVE UNITED METHODIST CHURCH
3320 Notten Rd.
The Rev. J. William Todd, Pastor
Every Sunday—
10:00 a.m.—Sunday school.
11:00 a.m.—Worship service.

VILLAGE UNITED METHODIST CHURCH OF WATERLOO
8118 Washington St.
The Rev. Altha Barnes, Pastor
Every Sunday—
10:00 a.m.—Sunday school.

CHELSEA MEDICAL CENTER
Every Other Wednesday—
1:30 p.m.—Worship service.

FIRST CHURCH OF CHRIST, SCIENTIST
1883 Washtenaw Ave., Ann Arbor
Every Sunday—
10:30 a.m.—Sunday school; morning service.

FIRST ASSEMBLY OF GOD
The Rev. Thode B. Thode, Pastor
Every Sunday—
9:45 a.m.—Sunday school.
11:00 a.m.—Worship service.
6:00 p.m.—Youth Service.
7:00 p.m.—Evangelistic service.
Every Wednesday—
10:00 a.m.—Ladies Bible Study.
7:00 p.m.—Midweek services.

ST. JOHN'S (UNITED CHURCH OF CHRIST)
Rogers Corners
The Rev. Richard Campbell, Pastor
Every Sunday—
9:30 a.m.—Sunday school.
10:30 a.m.—Worship service.

BETHEL EVANGELICAL AND REFORMED CHURCH
(United Church of Christ)
Freedom Township
The Rev. Roman A. Reineck
Every Sunday—
10:00 a.m.—Worship.

CHELSEA BAPTIST CHURCH
337 Wilkinson
The Rev. James Stacey, Pastor
Every Sunday—
9:45 a.m.—Sunday school.
11:00 a.m.—Worship service.
Nursery care available during all services.
6:00 p.m.—Junior and Senior Baptist Youth Fellowship.
7:00 p.m.—Evening service.
Every Wednesday—
7:00 p.m.—Bible study and prayer meeting.

Missionary To Speak At Immanuel Church Sunday Services

The Rev. David Crane, missionary serving with the Evangelical Alliance Mission in Trinidad, will be at Immanuel Bible church for all services on Sunday, March 17. He has been active in church planning, as well as establishing an outstanding youth camp, known as Victory Heights.

After the evening service (8:30 p.m.) there will be a Moody Science Film shown entitled, "The Ultimate Adventure." This 16-mm film, in full color, shows restless men seeking new adventure, at-tempt the impossible, crossing the vast and formidable Sahara Desert on motorcycles. Men and machines pitted against the scorching sun and sand, engage in a life and death struggle for survival and experience the ultimate adventure, a dramatic encounter with God. This is actually filmed by Dick Ewing, one of the first men to cross the Sahara on motorcycle. The public is invited.

Victory Sunday Set At N. Sharon Church

Victory Sunday, March 17 will highlight the "March for the Lord in March" campaign at North Sharon Bible church. Attendance goals are 490 in church at 11 a.m. and 392 in Sunday School at 10 a.m. Kites will be given to every child through eighth grade. Sunday school teachers, junior church workers and bus workers will be competing to win teaching helps such as Bible commentaries, dictionaries, and concordances by topping the previous month's class records.

Free to-your-door bus transportation from the Chelsea-Cavanaugh, or Crooked Lake area may be obtained by calling 428-7222.

PRESIDENT'S PATENT

Abraham Lincoln was the only President to receive a patent. He got it for inventing a buoys device to lift ships over tricky shoals.

ST. JOHN'S EVANGELICAL AND REFORMED CHURCH
(United Church of Christ)
Francisco
The Rev. J. P. Goebel, Pastor
Every Sunday—
9:30 a.m.—Sunday school until 10:30 a.m. Confirmation classes, seventh graders and up. Children's Choir Practice. Adult Bible Study.
10:30 a.m.—Worship service until 11:30 a.m. Nursery available for pre-schoolers during worship service.

METHODIST HOME CHAPEL
The Rev. R. L. Clemans, Pastor
Every Sunday—
8:45 a.m.—Worship service.

Wheat, Feed Grain Signup At Certification

Farmers who want to sign up for the 1974 wheat and feed grain programs will be able to do it when they certify their crop acreages according to Mrs. Carolyn Stump, executive director for the Washtenaw County Agricultural Stabilization and Conservation Service (ASCS).

This year, Mrs. Stump said, sign-up will be combined with certification. "The machinery is very simple," Mrs. Stump said. Farmers wishing to participate in a program should visit the county office as soon as possible after planting, for sign-up and certification. After filling out and signing the forms, the farmer leaves them at the county office or mails them back in as he prefers. "It's as simple as that," Mrs. Stump said.

Signup begins with certification, that is, when the farmer certifies the acreages of crops he has planted. The final date for sign-up in Michigan is July 1. Participation in the two commodity programs has been simplified too, Mrs. Stump said. There are no set-aside requirements, no restriction on planting for the 1974 crop, and no conserving base requirements through the next four crop years, the duration of the Agriculture and Consumer Protection Act of 1973, Mrs. Stump said.

This means that under the 1974 program, farmers will be able to plant as many acres as they want of any crop except tobacco, peanuts and extra long staple (ELS) cotton, which are still under marketing quotas.

Farmers who sign up will be eligible for program payments should payments be required. Under the 1973 Act farmers are guaranteed a "target price." For corn it is \$1.38 a bushel and for wheat \$2.05 a bushel. If the average price for these commodities falls below the target price, the producer receives the difference between the target price and the five-month average price received by all farmers for wheat and feed grains.

PIERSON & SONS
LICENSED GENERAL CONTRACTORS
475-8750
New Construction, Remodeling, Siding.

COMET TAILS
Comet tails can stretch tens of millions of miles. The longest yet measured extended more than 186 million miles from the Great Comet of 1843; Halley's Comet in 1910 reached out 90 million miles.

Subscribe today to The Standard!

NEW MENU PLANNING
There's a whole new world of menu planning when you turn to sautes. The more than 200 varieties of these exciting spicy meat products available today provide many possibilities for making menus interesting with new casseroles, salad and sandwich combinations.

SETTLEMENT DAY

All persons with bills against Dexter Township are hereby notified that they should be presented to the Board on or before Tuesday, March 19 at which time the board will meet at 8 p.m. at the Township Hall, to act upon such matters.

DEXTER TOWNSHIP
WILLIAM EISENBEISER, CLERK

NOTICE

ANNUAL TOWNSHIP MEETING

NOTICE IS HEREBY GIVEN, That the next Annual Township Meeting of the Electors of the

TOWNSHIP OF LYNDON

County of Washtenaw, State of Michigan will be held at

Lyndon Township Hall

(Corner of North Territorial Road and Townhall Road)

Beginning at 1:00 o'clock P.M., Eastern Standard Time

Saturday, March 30, 1974

At such time in accordance with the law a budget covering proposed expenditures and estimated revenues of the Township shall be submitted for consideration.

Signed: **DORIS FUHRMANN**
Township Clerk.

Dated: March 14, 1974.

SPECIAL SCHOOL ELECTION

NOTICE OF SPECIAL ELECTION OF THE QUALIFIED ELECTORS OF

Chelsea School District

WASHTENAW AND JACKSON COUNTIES, MICHIGAN TO BE HELD

Tuesday, March 26, 1974

TO THE QUALIFIED ELECTORS OF SAID SCHOOL DISTRICT:

Please Take Notice that a special election of the qualified electors of Chelsea School District, Washtenaw and Jackson Counties, Michigan, will be held in the Large Group Instruction Room of the Dwight E. Beach School on Tuesday, March 26, 1974.

THE POLLS OF ELECTION WILL OPEN AT 7:00 O'CLOCK, A.M., AND CLOSE AT 8:00 O'CLOCK, P.M.

The following proposition will be submitted to the vote of the electors qualified to vote thereon at said special election.

TAX RATE LIMITATION INCREASE PROPOSITION FOR OPERATING PURPOSES

Shall the limitation on the amount of taxes which may be assessed against all property in Chelsea School District, Washtenaw and Jackson Counties, Michigan, be increased by 14.78 mills for a period of two (2) years, 1974 and 1975, for the purpose of providing additional funds for operating expenses?

All school electors who are registered with the township clerk or the township in which they reside are eligible to vote at this election.

COUNTY TREASURER'S STATEMENT

(As required by Act 293, Public Act of Michigan 1947)
I, Hilary E. L. Goddard, County Treasurer of the County of Washtenaw, State of Michigan, do hereby certify that, according to the records of this office, as of February 25, 1974, the total of all voted increases over and above the tax rate limitation established by the constitution of Michigan, in local units of government, affecting the taxable property in Washtenaw County, State of Michigan, in said County, is as follows:

By Washtenaw County	NONE
By Sylvan Township	NONE
By Sharon Township	NONE
By Freedom Township	NONE
By Lima Township	NONE
By Dexter Township	NONE
By Lyndon Township	NONE
By the School District	NONE

HILARY E. L. GODDARD
Washtenaw County Treasurer

COUNTY TREASURER'S STATEMENT

I, Merlyn E. Johnson, Treasurer of Jackson County, Michigan, hereby certify that, as of February 26, 1974, the records of this Office indicate that the total of all voted increases over and above the tax limitation established by the Constitution of Michigan, in any local units of government affecting the taxable property located in Chelsea School District, Washtenaw and Jackson Counties, Michigan, is as follows:

By Jackson County	NONE
By Grass Lake Township	2 Mills
By Waterloo Township	1 Mill
By the School District	NONE
By Jackson Community College	1.33 Mills
By Jackson Intermediate Special Education	1.50 Mills
By Jackson Intermediate Vocational Tech.	2.50 Mills

Merlyn E. Johnson, Treasurer
Jackson County, Michigan

This Notice is given by order of the Board of Education of Chelsea School District, Washtenaw and Jackson Counties, Michigan.

ROBERT N. SCHAPER

The UNADILLA GLAYROOM CERAMIC SHOPPE
Greenware and Ceramic Supplies at the
UNADILLA STORE
Ph. Gregory 498-2552

FARMERS' SUPPLY CO.
Faster gains from better FEEDS
Calves get growing and gaining faster, on our balanced, fortified Calf Feed... enriched with needed vitamins, minerals.
Complete feeding rations for all your livestock, poultry.
PHONE 415-1777



Detroit Edison

Industry--and that means jobs--requires a reliable supply of electricity.

Industry must grow to provide jobs in Southeastern Michigan. And industrial expansion depends upon a reliable supply of electricity. We must maintain our system and build new plants and electric lines to meet all electrical needs. But our costs are rising fast. That's one of the reasons we have to ask for price increases. You can't take electricity for granted anymore, but we'll continue to do our best to provide reliable electric service now and in the future.

SOUTH ELEMENTARY SCHOOL NOTES

READING ROOM

Teacher: Mrs. Maitland
The third and fourth grade Reading room classes have been following news clippings concerning Thomas Gatch, Jr., the ballplayer. He wants to be the first to make a trans-Atlantic flight.

The children made a folder in which they unscrambled headlines to make the story. On the cover they designed his gondola and 10 balloons. They wrote a story of what might have happened to him. All the children are hoping for a happy ending. Some would like to write him a letter.

Kevin Feldkamp received the big bookworm and Mike Beuerle the big bird for reading the most books in February. Twenty-two children received a cat to hang up at home for reading at least five books in February.

Parents will be keeping a March calendar for time spent in word study and reading at home each day. A prize will be given for each calendar returned and filled out.

Room 3

Teacher: Mrs. Bower
We all took a kite home. Each kite had four parts, and we colored them four different colors. It will be fun to play with our kites when we have a good March wind.

The pussy willows are coming out in our room, and our sweet potato is growing roots. With all of this warm weather, we will soon be planting our seeds.

Twice a month we go down to the library for a story from Mrs. McMannis, our librarian. It is fun to see so many books in one room, and look forward to her special story.

Peter Katulla is our new boy that we have in the afternoon class. It is really fun to welcome a new member.

This week we all mixed green right on our finger paint paper with yellow and blue paint. We will soon be seeing green shoots.

PIERSON & SONS

LICENSED GENERAL CONTRACTORS
475-8750

New Construction, Remodeling, Siding.



come up from the flower beds and the grass and trees.

Signs of spring are everywhere. Some of the birds are back near our playground. The ground is soft, and the flowers are just pushing up out of the ground.

Have a safe, happy, fun filled spring time.

Room 1

Teacher: Mrs. Van Blaricum
We proudly announce the birth of two guinea pigs presently known as the brown one and the black one. They were born Feb. 28 and are progressing nicely.

We are looking for signs of spring. Mrs. Bower brought us some pussy willow branches for our room, and we will be planting seeds and caring for them. We saved our pumpkin seeds from Halloween for a reason.

As we talk about our community helpers we hope to have some parents come in to tell us about their jobs. We will be talking about policemen, firemen, grocers, bakers, doctors, nurses, mailmen, etc.

Our March birthday people are Kurt Roberts, Shanda Friday and Kelly Borowski.

Room 17

Teacher: Mrs. Thodeson
March has come in with chicken pox in our first grade room. We hope that all the sick ones will be well soon, so that we can get rolling ahead with our work. Some of us have started in SRA. We are keeping a weather calendar for March. We like the lamb weather we have had. We made kites.

In health, we are learning the kinds of foods we need to have healthy bodies. We have been reading the daily lunch menu and discussing a good breakfast.

Mark Henson and Debbie Thelen had a Raggedy Ann and Andy puppet show for all the first grades. Mark and his father made the stage. Debbie helped Mark paint it.

When we were studying about George Washington we talked about our first flag. We made flags. Some children made 13 stars for our first 13 states. Some made flags with 50 stars, but some flags had many more — looking toward future expansion.

With Mrs. Schiller's class we made butter. Each child got to beat and then to eat it with crackers. Mike Winkle had a new baby sister. He brought her first picture for the class to see.

We all enjoyed Joe Merkel's February birthday party. In March 7 Mrs. Schiller's class joined us

District Court Proceedings

Robert A. Bauer was fined \$200 and instructed to participate in the Alcohol Safety Program for impaired driving.

Tony Brown pled guilty to careless driving and was fined \$30.

David E. Miller pled guilty to driving with studded snow tires and was fined \$10. He pled guilty to failure to maintain equipment and was also fined \$10.

Paul S. Johnson, Dennis Murdock, and Billie G. Dickey were bound over to circuit court for arraignment on charges of breaking and entering.

William Solt pled guilty to careless driving and was fined \$70. Ronald Brown pled guilty to executing an improper left turn and was fined \$18.

Joyce Mote pled guilty to speeding and was fined \$23.

Stephen Barbara pled guilty to speeding and was fined \$25.

John D. Becker pled guilty to driving without insurance and was fined \$18. He pled guilty to failure to change registration plates and was sentenced to three days on the Saline Work Program.

David Bastian, II, was fined \$100 for possession of unregistered firearms.

Larry M. Hill was fined \$300, placed on two years probation, and instructed to participate in the Alcohol Safety Program for impaired driving.

Howard W. Dawson pled guilty to a reduced charge of impaired driving and was fined \$175.

Hugh Patterson was fined \$250, placed on two years probation, and instructed to participate in the Alcohol Safety Program for impaired driving.

Charles Kolander was fined \$100 for possession of marijuana.

David Johnson was charged with driving without an operator's permit on his person. The charge was dismissed on \$6 costs.

Michael Gibbons pled guilty to driving without an operator's permit on his person and was fined \$25.

Patrick A. Gregory was charged with driving without an operator's permit on his person. The charge was dismissed on \$6 costs.

Nancy Otramblo pled guilty to executing an improper U-turn, and was fined \$16.

Randy Gregory was charged with possession of defective equipment. The charge was dismissed on \$6 costs.

Dennis West was charged with driving without proof of insurance. The charge was dismissed on \$6 costs.

Rodney McCormick pled guilty to speeding and was fined \$21.

Luther McCowder pled guilty to speeding and was fined \$23.

Carl Jones pled guilty to speeding and was fined \$23.

Peggy Jeremy pled guilty to speeding and was fined \$33.

Glen Mast pled guilty to speeding and was fined \$21.

Leland N. Barrett pled guilty to driving without an operator's permit on his person. The charge was dismissed on \$6 costs.

Michel J. Gregory was charged with careless operation of a snowmobile. The charge was dismissed on \$6 costs.

Joel Pence changed his plea to guilty of driving with a suspended license and was fined \$100 and sentenced to three days on the Dexter Police Work Program.

Michael O. Ledwidge pled guilty to a reduced charge of speeding and was fined \$21.

Alexander Zongara was found guilty of improper passing and fined \$31.

Robin Shaffer was set for preliminary examination on a charge of escape from prison on March 14.

Helen Rondo pled guilty to a charge of drunk and disorderly and was fined \$50.

Sally Northrup was fined \$16 and ordered to pay \$16.16 restitution for allowing her dog to run at large.

James Berry was fined \$25 and sentenced to three days on the Whitmore Lake Work Program for possession of open intoxicants in a motor vehicle.

Hans Kaling pled guilty to careless driving and was fined \$50.

Charles E. Murphy was fined \$200 and instructed to participate in the Alcohol Safety Program for driving under the influence of liquor.

Greg McMillan pled guilty to speeding and was fined \$50.

Dale R. Vaine pled guilty to a reduced charge of impaired driving and will be sentenced April 22.

John D. Becker pled guilty to driving without insurance and was fined \$18. He pled guilty to failure to change registration plates and was sentenced to three days on the Saline Work Program.

David Bastian, II, was fined \$100 for possession of unregistered firearms.

Larry M. Hill was fined \$300, placed on two years probation, and instructed to participate in the Alcohol Safety Program for impaired driving.

Howard W. Dawson pled guilty to a reduced charge of impaired driving and was fined \$175.

Hugh Patterson was fined \$250, placed on two years probation, and instructed to participate in the Alcohol Safety Program for impaired driving.

Charles Kolander was fined \$100 for possession of marijuana.

David Johnson was charged with driving without an operator's permit on his person. The charge was dismissed on \$6 costs.

Michael Gibbons pled guilty to driving without an operator's permit on his person and was fined \$25.

Patrick A. Gregory was charged with driving without an operator's permit on his person. The charge was dismissed on \$6 costs.

Nancy Otramblo pled guilty to executing an improper U-turn, and was fined \$16.

Randy Gregory was charged with possession of defective equipment. The charge was dismissed on \$6 costs.

Dennis West was charged with driving without proof of insurance. The charge was dismissed on \$6 costs.

Rodney McCormick pled guilty to speeding and was fined \$21.

Luther McCowder pled guilty to speeding and was fined \$23.

Carl Jones pled guilty to speeding and was fined \$23.

Peggy Jeremy pled guilty to speeding and was fined \$33.

Glen Mast pled guilty to speeding and was fined \$21.

Leland N. Barrett pled guilty to driving without an operator's permit on his person. The charge was dismissed on \$6 costs.

Michel J. Gregory was charged with careless operation of a snowmobile. The charge was dismissed on \$6 costs.

Joel Pence changed his plea to guilty of driving with a suspended license and was fined \$100 and sentenced to three days on the Dexter Police Work Program.

Michael O. Ledwidge pled guilty to a reduced charge of speeding and was fined \$21.

Alexander Zongara was found guilty of improper passing and fined \$31.

Robin Shaffer was set for preliminary examination on a charge of escape from prison on March 14.

Helen Rondo pled guilty to a charge of drunk and disorderly and was fined \$50.

Sally Northrup was fined \$16 and ordered to pay \$16.16 restitution for allowing her dog to run at large.

James Berry was fined \$25 and sentenced to three days on the Whitmore Lake Work Program for possession of open intoxicants in a motor vehicle.

Hans Kaling pled guilty to careless driving and was fined \$50.

Charles E. Murphy was fined \$200 and instructed to participate in the Alcohol Safety Program for driving under the influence of liquor.

Greg McMillan pled guilty to speeding and was fined \$50.

Dale R. Vaine pled guilty to a reduced charge of impaired driving and will be sentenced April 22.

Kenneth Herrst changed his plea

Because of you... today a man is on a dusty road leading south from Rawalpindi...

reporting, analyzing, probing — to send you an eye-witness story. Other Christian Science Monitor reporters are gathering facts for you in Moscow, Nairobi, Beirut, London, Tokyo, San Francisco, and Washington.

Because you need to understand what's happening in order to change what's wrong and to support what's right.

The Christian Science Monitor gives you the facts, and reports how problems are being solved. It keeps you informed but not depressed — the Monitor has a uniquely hopeful outlook.

News, commentary, art, entertainment, fashion, sports, business, family: a lively daily newspaper (Monday — Friday) with something for everyone.

For 13¢ a day — less than two postage stamps.

Yes, I want this unique daily newspaper for 4 months — over 80 issues for only \$11.

☐ Payment enclosed ☐ Bill me later

Name (Please print)

Street Apt.

City

State ZIP

The Christian Science Monitor® Box 126, Astor Station Boston, Massachusetts 02123

New Field Offices Opening for Secretary of State

Two new field offices to serve the Ann Arbor area have been opened, according to Secretary of State Richard H. Austin.

In addition to the two new offices, a third office, located in Dearborn, has changed its address and has expanded services.

In Ann Arbor, the offices are located at 611 Church St., and 1924 W. Stadium Blvd. The offices conduct all forms of business handled by the Secretary of State including issuance of driver licenses, registrations and titles, according to Austin.

The office located at 611 Church, managed by Margaret Merryfield, is open from 10 a.m. to 6:30 p.m. on Monday, and from 8:30 a.m. to 5 p.m. Tuesday through Friday.

Manager Betty Lawrence opens the field office located at 1924 W. Stadium Blvd. from 8:30 a.m. to 5 p.m. on Monday, Wednesday, Thursday and Friday, and from 10 a.m. to 6:30 p.m. on Tuesdays.

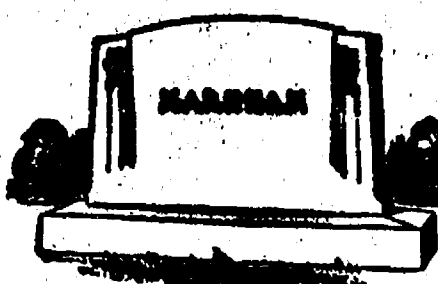
The Dearborn office, managed by Dorothy Young, has moved and is now located at 5061 Schaefer, according to Austin.

In addition to issuing titles and registrations, the field office issues driver licenses.

The Dearborn office is open from 8:30 a.m. to 6:30 p.m. Monday, Tuesday, Thursday and Friday, and from 10 a.m. to 6:30 p.m. on Wednesdays.

LOSE UGLY FAT OR PAY NOTHING

Start losing weight today OR MONEY BACK. MONDEX is a tiny tablet that will help curb your desire for excess food. Fat less weight less. Contains no dangerous drugs and will not make you nervous. No strenuous exercise. Change your life start today. MONDEX costs \$3.00 for a 30 day supply and \$5.00 for twice the amount. Lose ugly fat or your money will be refunded with no questions asked by: CHELSEA DRUG STORE Chelsea - Mail Orders Filled



MAUSOLEUMS ★ MONUMENTS
BRONZE TABLETS ★ MARKERS

BECKER MEMORIALS

6033 Jackson Road
ANN ARBOR, MICHIGAN

BREAD CUBED STEAKS

Cubed steaks mean a quickly-fixed dinner to many working homemakers. As a variation, try them breaded. For one pound of cubed steaks, use one egg, slightly beaten with two tablespoons of water. Dip steaks in egg, then in cracker meal, then fry in two or three tablespoons of lard or drip-

plings until well browned. After browning, if well done is desired, the frying-pan may be covered and steaks cooked for 10 minutes or until more well done.

Fifty percent of America's older citizens are single—that is widowed, separated, divorced or never married.

HAMILTON REFRIGERATION & AIR CONDITIONING SERVICE

MANCHESTER

COMMERCIAL SYSTEMS Installation and Repair

CALL GARY HAMILTON - 428-7600
NIGHTS 428-8232

NOTICE

ANNUAL TOWNSHIP MEETING

NOTICE IS HEREBY GIVEN, That the next Annual Township Meeting of the Electors of the

TOWNSHIP OF SYLVAN

County of Washtenaw, State of Michigan

will be held at

Sylvan Township Hall

Beginning at 1:00 o'clock P.M., Eastern Standard Time on

Saturday, March 30, 1974

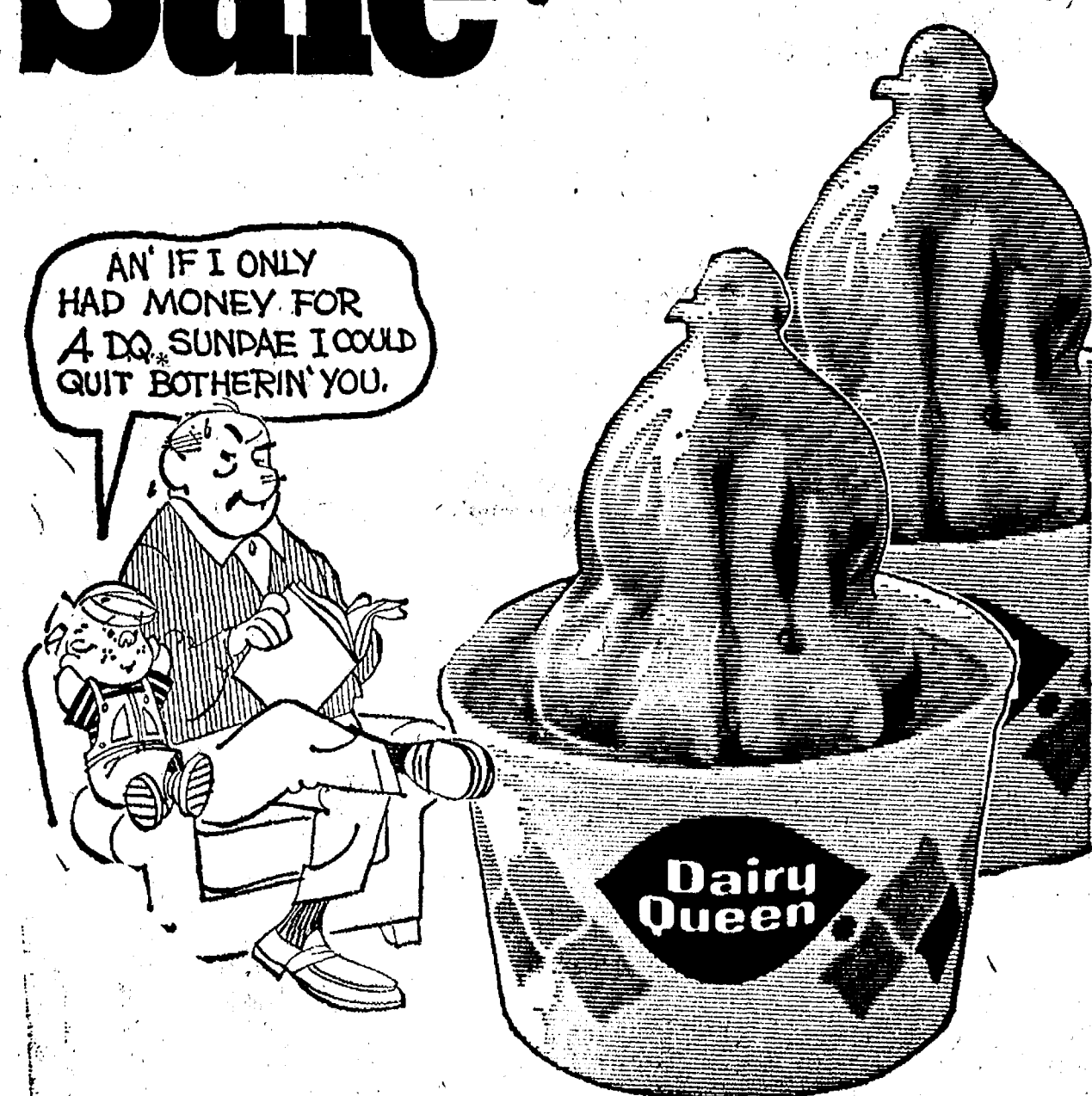
At such time in addition to other regular business and in accordance with the law, a budget covering proposed expenditures and estimated revenues of the Township shall be submitted for consideration.

Signed: DANIEL MURPHY
Township Clerk.

Dated: March 14, 1974.

1¢ Sundae Sale

Buy one regular size sundae, at regular price, get a second one for 1¢.



a "Scrumpdillyishus" offer
good Thurs. & Fri., March 14-15.

What a Scrumpdillyishus deal! Now buy one DAIRY QUEEN regular size sundae—any flavor you choose—and get a second sundae for just 1¢ more! A Scrumpdillyishus way to treat a friend. Or, have a double sundae feast yourself! Offer good this Thursday and Friday only at participating DAIRY QUEEN stores.

Dairy Queen

* 901 S. MAIN STREET, CHELSEA

* Reg. U.S. Pat. Off. Am. D.Q. Corp. Copyright 1974, Am. D.Q. Corp.

RICK'S MARKET

The Little Store That Wants To Do Big Things!
20490 M-52 North
PHONE 475-2898

SPARTAN

BREAD

Big 1 1/2-Lb. Loaves \$1

FARMER PEET'S

BOLOGNA VARIETY PAK TWIN PAK

12 Oz. Pkg. 85¢

7-UP, The Uncola

16 Oz. No-Return 8 pak \$1.15

OVEN FRESH

CINNAMON ROLLS

49¢ Pkg. of 12

Fresh Donuts & Delicious Bar-B-Q Ribs & Chicken Daily

FRESH BAKED BREAD ON WEEK-ENDS!

Our Specials Are Good for the Whole Week - Thurs., Mar. 14 to Wed., Mar. 20
NOT JUST 4 DAYS!

BORDEN'S HOMO

WHOLE MILK

gal. \$1.29

SPARTAN FROZEN

CORN - PEAS MIXED VEG. - SPINACH

10-Oz. Pkgs. 93¢

MORTON

WATER SOFTENER PELLETS

80 lbs. \$2.45, 40 lbs. \$1.43

SPARTAN FROZEN

ORANGE JUICE

16-Oz. Can 55¢



BOWLING NEWS



Sunday Swingers

Standings as of March 8

	W	L
H & M	42	14
Strangers	35	21
Sandbaggers	34	22
The Avengers	33	23
CeeBee	31	25
Odd Couple	31	25
The Hotdogs	31	25
K-O's	30 1/2	25 1/2
The Newcomers	28 1/2	27 1/2
A & C	27	28
The Irratics	27	28
Achtenbolds	26 1/2	29 1/2
On Timers	25 1/2	30 1/2
The Unweds	25 1/2	30 1/2
Six Packs	23	32
Butternuts	21 1/2	34 1/2
Pin Peddlers	18	38
Sideways	16	40

Women, games 150 and over: B. Hafley, 177; 160, R. McGibney, 189; 152, G. Weiner, 159; 150, M. Usher, 144; N. Kern, 163; T. Steinaway, 170; R. Knowlton, 150; J. Baku, 187; N. Collins, 160; 162, M. Degener, 178; S. Bauers, 164; M. Henry, 151; L. Kinsey, 166; 155, 154, 154, D. Verwey, 163, 153.

Men, games 175 and over: W. Brown, 180; J. Koepke, 195; P. McGibney, 185; C. Komon, 183; J. Ahrens, 197; 176, G. Dresch, 178, 202; J. Arnold, 175; D. Cumber, 188; R. Kern, 188, 182, 177; D. Baku, 210; J. Collins, 212; L. Degener, 184; H. Johnson, 175, 224; A. Kinsey, 178, 185; B. McGibney, 182; J. Eder, 188.

Women, series 425 and over: B. Hafley, 495; R. McGibney, 484; G. Weiner, 432; M. Usher, 509; N. Kern, 438; T. Steinaway, 428; N. Collins, 457; J. Hafner, 463; D. Verwey, 462.

Men, series 475 and over: W. Brown, 532; J. Koepke, 497; P. McGibney, 509; J. Ahrens, 539; G. Dresch, 539; R. Kern, 557; D. Baku, 551; J. Collins, 547; A. Steinaway, 480; H. Johnson, 558; R. Kinsey, 514; V. Hafner, 479; J. Eder, 491.

Chelsea Suburban

Standings as of March 6

	W	L
Chelsea Drug	109	80
Dairy Queen	108	81
Waterloo Garage	107	82
State Farm	104	85
For Mobil	101	88
Pittsfield Plastics	98	91
Klink Excavating	91	98
Chelsea State Bank	90	99
Dancer's	83	106
Dana Corp.	82	107
Frisinger Realty	81	108
Chelsea Lanes	80	109

425 series and over: N. Collins, 530; P. Elliott, 496; D. Kinsey, 450; G. DeSmith, 472; N. Packard, 488; L. Jarvis, 447; D. Keizer, 430; J. Baku, 427; J. Schulze, 450; L. Beeman, 472; G. Baczynski, 433; N. Prater, 450; B. Smith, 455; E. Figg, 429; M. De La Torre, 441; F. Cole, 501; C. Stoffer, 458; N. Keizer, 445; S. Bawen, 439; B. Hafley, 434; A. McGibney, 430; A. Hocking, 482.

150 games and over: P. Elliott, 165, 154, 177; S. Ratzlaff, 154; N. Collins, 192, 196; D. Kinsey, 155; L. Fulcher, 160; K. Chapman, 172; G. DeSmith, 165, 173; N. Packard, 176, 172; L. Jarvis, 179; A. Copperrill, 157; D. Keizer, 164; J. Schulze, 159, 169; L. Beeman, 182, 181; E. Whitaker, 155; G. Baczynski, 188; N. Prater, 166, 156; B. Smith, 168, 165; E. Figg, 164; F. Cole, 176, 171, 154; H. Harrison, 155; K. Snyder, 170; M. De La Torre, 156; D. Keizer, 155; C. Peterson, 166; B. Hafley, 165; M. Neal, 163; R. West, 163; R. McGibney, 154; G. Stoffer, 190, 158; B. Krichbaum, 154; N. Keizer, 156; S. Bowen, 174; A. Wood, 154, 152; A. Hocking, 170, 171.

Tri-City Mixed League

Standings as of March 8

	W	L
Real Estate One	61 1/2	42 1/2
Craft Appliance Co.	61	43
Chelsea Cleaners	60 1/2	47 1/2
Jiffy Mixes	60	44
Portage Hardware	59	49
3-D Sales & Service	59	49
Sprague Buick & Olds	57 1/2	50 1/2
Jiffy Market	57	51
Jerry & Doug's Quality	54	54
Euler & Swersky	54	54
E. P. Smith Pallet Co.	53	55
Stevens	52	56
The Lively Ones	50 1/2	57 1/2
For Mobil	50	58
Hoover's Hustlers	49	59
4-W's	48	56
4-B's	46	62
Detting & Gaddis	32	76

500 series, men: S. Cavender, 531; C. Detting, 528; D. Detting, 518; R. Fike, 540; W. Griffith, 538; H. Kunzelman, 557; R. Lentz, 503; J. Lyerla, 518; D. Weston, 510; R. Worden, 523.

200 games, men: S. Cavender, 201; W. Griffith, 218; D. Weston, 200.

450 series, women: M. Ashmore, 482; G. Detting, 450; D. Touty, 502.

150 games, women: M. Ashmore, 179, 169; J. Buckingham, 156; E. Detting, 157; G. Detting, 157; D. Fouty, 170, 191; J. Harms, 165; C. Hodges, 161; J. Kaiser, 160; V. McNutt, 154; E. Miller, 155; J. Mock, 162; B. Parsh, 151, 174; D. Swersky, 150; E. Rindall, 165, 160; D. Watkins, 170; M. Weed, 156; M. Weston, 152, 161.

Chelsea Women's League

Standings as of March 6

	W	L
Chelsea Lanes	73 1/2	34 1/2
Jiffy Mixes	73 1/2	34 1/2
Washtenaw Engr. Co.	71	37
Parish's Cleaners	69	39
Arbor Advertising	68	40
Chelsea Grinding	61 1/2	46 1/2
Thompson's Pizza	61	47
Chelsea Milling	59 1/2	48 1/2
Norris Electric	58	50
Wolverine Lounge	53 1/2	54 1/2
United Oil Co.	48	60
Schneider's Grocery	45 1/2	62 1/2
Bridges Chevrolet	45	63
Joe and Judy's	44 1/2	63 1/2
Heydlauff's	44	64
Larry's Roadside Market	35 1/2	72 1/2
Rockwell International	31	77
Mark IV	30	78

450 series and over: J. Koch, 528; N. Packard, 521; L. Bradbury, 518; D. Judson, 517; B. Noll, 518; J. Fouty, 505; R. Hummel, 496; B. Larson, 483; M. Kozminski, 479; J. Hafner, 474; P. Fitzsimmons, 467; D. Fouty, 465; P. Strickland, 462; B. Fritz, 462; R. Lutovsky, 461; N. Kern, 459; A. Boham, 459; D. Verwey, 451; P. Wurster, 450.

150 games and over: J. Koch, 211, 166; N. Packard, 196, 181; L. Bradbury, 201, 183; D. Judson, 192, 183; B. Noll, 160, 169, 187; J. Fouty, 184, 160, 161; R. Hummel, 172, 175; B. Larson, 178, 157; M. Kozminski, 158, 182; J. Hafner, 188; P. Fitzsimmons, 157, 163; D. Fouty, 153, 188; P. Strickland, 168, 156; B. Fritz, 188; R. Lutovsky, 153, 173; N. Kern, 199; A. Boham, 153, 163; D. Verwey, 158, 158; P. Wurster, 162; V. McClellan, 152; J. Panfil, 165; E. Ward, 153; B. Louckes, 154; A. Sindlinger, 159; T. Steinaway, 155; J. Rowe, 158; J. Merkel, 152; T. Kenney, 164; D. Eisenmann, 153; S. Ringe, 164, 150; M. Sutter, 158; A. Alexander, 162; D. Alber, 157; P. Abdon, 155; J. Reinhart, 152; N. Popovich, 165; L. Orlowski, 167; D. Frisbie, 153, 158; S. Klink, 164, 156; L. Hafner, 154; J. Norris, 153.

Hi Point Mixed

Standings as of March 8

	W	L
Alley Runners	607	607
River Rats	522	522
Zap	469	469
Flat Tires	478	478
Heavy Traffic	477	477
Faber Fabrics	454	454
Dexter Gear & Spline	452	452
Rowe Plumbing	447	447
4 D's	446	446
Leuthausen	442	442
Ding A Lings	422	422
Hit & Missers	379	379

Women, high game, 150 and over: M. Morton, 189; E. Harmon, 155, 164; W. Landwehr, 153; G. DeSmith, 188; V. Guenther, 153; C. Klapperich, 170, 168.

Women, high series, 425 and over: C. Klapperich, 468; E. Williams, 429; M. Morton, 490; E. Harmon, 436.

Men, high game, 160 and over: O. Inbody, 164; W. Teachworth, 178, 164; A. Hansen, 173; D. Carpenter, 190, 161, 181.

Men, high series, 450 and over: D. Carpenter, 523; W. Teachworth, 494; A. Hansen, 473; F. Steers, 451.

Junior Swingers

Standings as of March 8

	W	L
Pin Smokers	68	40
Rod's IV	67	41
Superstars	63	45
The Good Guys	62	46
The Alley Cats	62	46
The Freaks	54	54
Y.B.A. Scorers	51	57
Hush Puppies	47	61
Team 10	45 1/2	62 1/2
The Swingers	16 1/2	91 1/2

Girls, games 120 and over: S. Fahrner, 124; D. Craft, 157, 148, 140; K. Milliken, 138, 133; D. Packard, 133, 139; C. Collins, 131, 121; B. Lovely, 168; M. Fahrner, 136, 125; S. Schulze, 192; K. Tobin, 123; T. Lutovsky, 167, 147.

Girls, series 350 and over: D. Craft, 445; K. Milliken, 380; D. Packard, 378; C. Collins, 367; B. Lovely, 388; M. Fahrner, 370; S. Schulze, 413; T. Lutovsky, 416.

Boys, games 150 and over: C. Stoddard, 163; D. Thompson, 172, 171; J. Sweet, 157, 183, 151; G. Sammes, 180, 175; D. Craft, 167; J. Collins, 160; J. Boyer, 157; C. Johnson, 150, 153; M. Sweeney, 199, 227; K. Steinaway, 190; M. Burnett, 153; D. Messner, 186, 181; D. Alber, 183, 191; R. Weiner, 181.

Boys, series 440 and over: D. Thompson, 470; J. Sweet, 491; C. Sammes, 489; M. Sweeney, 569; D. Messner, 512; D. Alber, 519; R. Weiner, 477.

Chelsea Lanes Mixed

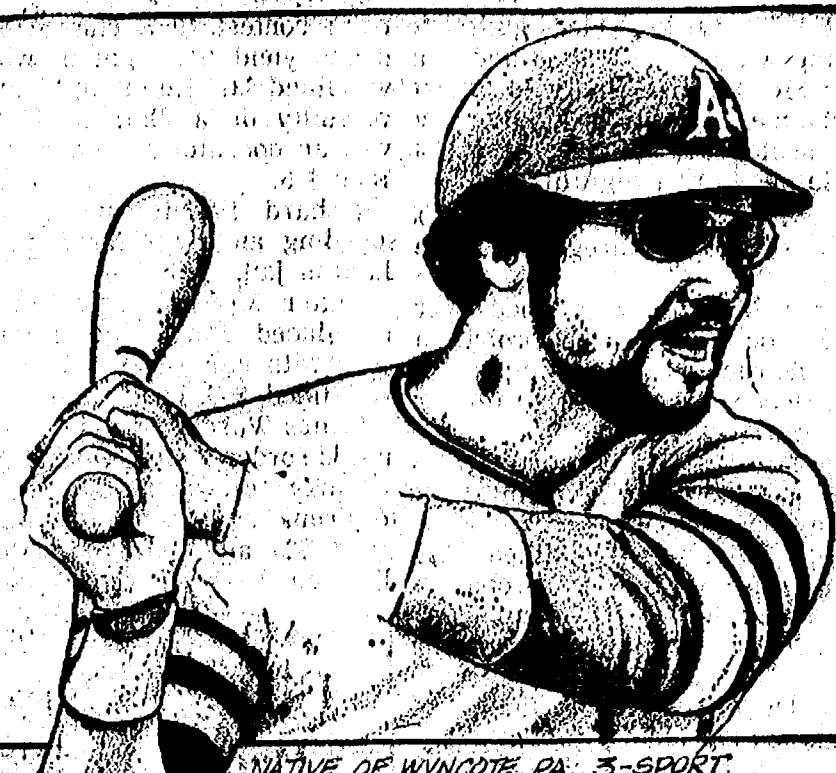
Standings as of March 8

	W	L
Fitzsimmons Excav.	114	75
Bushwackers	111	78
Chelsea Lanes	108	81
Meabon's	107 1/2	82 1/2
The B's & D's	107	82
Doug's Painting	102	87
Marsh & Verwey	100	89
Wilson & McDonald	100	89
Four Roses	99	90
Locite	98 1/2	90 1/2
Happy-4	95	94
Ann Arbor Centerless	88 1/2	100 1/2
Bollinger Sanitation	87	102
Hopefuls	86 1/2	102 1/2
G & C Ranch	80	109
Ann Arbor Eagles	73	116
The Four of Us	71	118
Jarvis & Neuman	66	116

High series: Doug's Painting, 2,404.

Women, 150 games: G. Bolanow,

SPORTS CORNER



REGINALD MARTINEZ JACKSON
NATIVE OF WINNETKA, CALIF. - 3-SPORT BASEBALL, FOOTBALL, BASKETBALL. MAN AT ARIZONA STATE UNIVERSITY. HAS THE TOOLS VETERAN SPORTS OBSERVERS SAY A BASEBALL PLAYER MUST HAVE TO ATTAIN SUPERSTARS STATUS. HE HAS SPEED, POWER, AND GREAT CONFIDENCE. REGGIE HAS MINOR LEAGUE EXPERIENCE WITH LEWISTON, MODESTO AND BIRMINGHAM. SECOND YEAR IN ARIZONA - 1973. WAS BEST D INE WITH BIRMINGHAM. 18 RBIS AND 275 AVERAGE. HE'S HIT TAPE MEASURE HOMERS IN KANSAS CITY, MINNEAPOLIS, AND BOSTON. NAMED TO AMERICAN LEAGUE ALL STAR TEAMS 1967, 70, 73. OFF SEASONS HE PLAYS BULL DOG CARIBBEAN, RUNS REAL ESTATE BUSINESS IN TEMPE, ARIZONA.

ski, 170; R. Rawson, 160; K. Wheeling, 169; R. Crawford, 153, 174, 151; L. Alexander, 153; J. Stoll, 158; L. Gilmore, 170, 153; D. Speers, 188; L. Gilmore, 170, 153; D. Speers, 188, 174; D. Verwey, 200, 188; J. Norris, 188, 178, 166; E. Detting, 151, 189, 174.

Men, 175 games: E. Vasas, 188, 203; U. Ellenwood, 190; S. Wilson, 195; T. Wisniewski, 178; S. Hopkins, 191, 177; D. Alexander, 203, 193; W. Makowski, 268; D. Speer, 180, 221; T. Marsh, 187, 180; J. Verwey, 206; W. Cozzens, 189; M. Packard, 175; J. Collins, 189; B. Eastman, 179.

Women, 425 series: A. Rawson, 445; R. Crawford, 478; L. Alexander, 437; L. Gilmore, 467; D. Verwey, 516; J. Norris, 532; E. Detting, 514.

Men, 500 series: E. Vasas, 549; S. Wilson, 537; T. Wisniewski, 510; S. Hopkins, 529; D. Alexander, 554; D. Speer, 570; T. Marsh, 507; B. Eastman, 507.

Charlie Brown & Snoopy's Friends Peanut League

Standings as of March 9

	W	L
Super Strikers	34 1/2	19 1/2
Pin Pushers	29	25 1/2
Star Thumbs	24 1/2	29 1/2
Fire Balls	23	31
Pin Crackers	22 1/2	31 1/2

Games 70 and over: S. Leisinger, 86; R. Lorenzen, 92, 111; D. Alexander, 81, 110; A. Fletcher, 92, 101; D. Detting, 103; K. Noll, 72; J. Verwey, 96, 107; D. Marsh, 79, 82; M. Petch, 87, 86; P. Hoffmann, 106, 101; D. Rowe, 91, 101; P. Owings, 71, 79; J. Brown, 80, 70; T. Greenleaf, 92, 134; R. Krichbaum, 85, 117; J. Rowe, 97, 121; J. Krichbaum, 129, 87; E. Bristle, 75; J. Packard, 71; Cheryl Schulze, 79; L. Miller, 82, 96; B. Behnke, 87.

Series 100 and over: S. Leisinger, 146; R. Lorenzen, 203; D. Alexander, 191; J. Toon, 137; A. Fletcher, 193; M. Bullick, 123; D. Detting, 172; K. Noll, 125; J. Verwey, 203; D. Marsh, 161; J. Hoffmann, 123; M. Petch, 173; P. Hoffmann, 207; K. Tobin, 128; B. Behnke, 121; D. Rowe, 192; P. Rowe, 150; J. Brown, 150; J. Owings, 149; R. Robeson, 177; T. Greenleaf, 228; R. Krichbaum, 202; J. Rowe, 218; J. Krich-

baum, 216; D. Waldyke, 121; J. Marshall, 113; E. Bristle, 136; J. Packard, 139; C. Schulze, 137; L. Miller, 178.

Chelsea Nite Owl League

Standings as of March 11

	W	L
Steele's Heating & Cooling	73	35
Dault & Levan	72	36
S. Roy Take-Out	64 1/2	43 1/2
Ted's Standard	64	44
Kirby	63 1/2	44 1/2
Wahl's Oil	58	52
Chelsea Finance	58	52
McCalla Mobile Feeds	55	53
Mark IV	52	58
A.M. Corp.	50	58
Sherlock Homes	49 1/2	58 1/2
Cavanaugh Lake No. 1	49	59
Foster's Men's Wear	48	60
Cavanaugh Lake No. 2	47	61
Alber's Orchard	46	62
Shelley Construction	44 1/2	63 1/2
Heller Electric	41	67
Pump & Pantry	38	70

200 games and over: Ron Heust, 219; G. Beeman, 203; G. Rentschler, 211; R. Beason, 200; D. Alexander, 201.

Senior House League

Standings as of March 11

	W	L
Ann Arbor Building Supply	124	58
Chelsea Lanes	124	58
Dana Demons	111	71
Inverness Inn	109	73
Mark IV	108	74
Smith's AAA	107	75
3-D Sales & Service	105	77
Wolverine No. 1	96	86
Jiffy Mix	93	89
Wolverine No. 2	93	89
Doug's Painting	93	89
Boyer Automotive	90	92
Slocum Const. & Building	81	101
Washtenaw Engineering	77	105
Rockwell International	69	113
Michigan Bell	65	117
Team No. 5	47	135
Linear Corp.	47	135

600 series: D. White, 609.

525 and over series: G. Beeman, 565; W. Beeman, 584; J. Risner, 572; F. Northrop, 547; R. Prater, 532; J. Ledwidge, 558; J. Myning, 532; J. Peterson, 565; P. Allen, 544; T. Schultz, 526; J. Bergman, 535; J. Shaninger, 525; J. Harook, 558; G. Weir, 531; R. Nix, 556; R. V. Worden, 540; G. Parker, 529.

Rolling Pin League

Standings as of March 12

	W	L
Egg Beaters	66	38
Coffee Cups	62	42
Kookie Kutters	60 1/2	43 1/2



BIDDY BASKETBALL BUCKS are, front row, from left, Paul Buntin and Mark Porath. In back, from left, are Eddie Johnson, Jerry Ham-

All Biddy Basketball Teams Will Play at Faculty Game

Three teams remained undefeated atop the three biddy basketball leagues as the teams enter their final week of competition.

Pacing the World Basketball Association are the Colonels, now 5-0, who edged the second-place Celtics, 16-14 last Saturday. The Stars continued winless, dropping their game to the Bucks, 6-5.

In the American Basketball Association, the undefeated Rockets roared over the last-place Squires, 21-12. Pacers squashed the Nets by an identical score, 21-12, to retain second place.

National Basketball Association action saw the Bullets, still undefeated, top the Lakers, 15-12. Hawks edged the Pistons, 20-16, to boost their record to 2-3.

Friday night all teams will play exhibition contests as part of the Chelsea-Dexter faculty game. WBA will play at 7 p.m.; ABA at 7:15; and NBA at half-time.

In Saturday's regular games, the schedule will be Colonels vs. Stars, Celtics vs. Bucks, Squires vs. Pacers, Rockets vs. Nets, Lakers vs. Hawks, and Bullet vs. Pistons.

BIDDY BASKETBALL RESULTS Games of March 9

Colonels 16, Celtics, 14.
Bucks 6, Stars 5.
Rockets 21, Squires 12.
Pacers 21, Nets 12.
Bullets 15, Lakers 12.
Hawks 20, Pistons 16.

WORLD BASKETBALL ASSOC. Standings as of March 9

Colonels	5	0
Celtics	3	2
Bucks	2	3
Stars	0	5

AMERICAN BASKETBALL ASSOC. Standings as of March 9

Rockets	5	0
Nets	3	2
Pacers	2	3
Squires	0	5

NATIONAL BASKETBALL ASSOC. Standings as of March 9

Bullets	5	0
Lakers	3	2
Hawks	2	3
Pistons	0	5

Waterloo Rd. Home Hit By Thieves

Stereo equipment, a camera, and a wedding dress, valued at approximately \$1,000 was stolen from the L. D. Guinan home at 17753 Waterloo Rd., on Monday afternoon.

Presently the house is inhabited by Mr. and Mrs. Keith Knobloch, who rent from the Guinan family while they vacation in Florida. The stolen property all belonged to the Knoblochs.

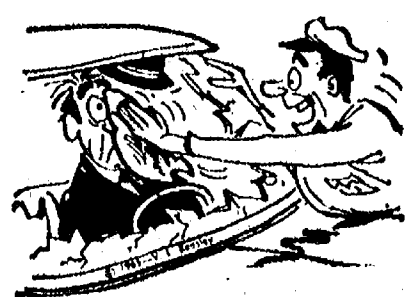
The Knoblochs report that they were absent from their home from 12 noon until approximately 5:30 p.m. on the day of the burglary. Stolen were a KR77 Kenwood amplifier, a 1209 dual turntable, a pair of Elite speakers, a Sony tape deck, a Konica camera, and a white wedding dress. The front door of the home was broken down to gain entry.

Mrs. Knobloch reports that Washtenaw County Sheriff's deputies apparently have no leads in the case. She and her husband are offering \$100 reward for information leading to return of their property.

They think that anyone driving near the house, located quite near Waterloo Rd. at Guinan Rd., would have noticed someone at the front door during the time of the robbery. Anyone having such information should contact the Knoblochs at 475-7295.

Losing political candidates and the earth have a lot in common. The earth isn't a perfect sphere. It's flattened at the poles—and so are the losing candidates.

Mobil-Toons By GLENN



"The boss insists we wash every windshield."

We please all our customers.

GLENN'S MOBIL SERVICE

1629 M-52 & I-94
CHELSEA, MICHIGAN
Phone 475-1767
GLENN HEIM PROP.



BIDDY BASKETBALL ROCKETS are, front row, from left, Coach Paul Buntin, Phil Powers, and Tim Pennington. In back, from left, are Geoff Shaw, David Weber, Monty Wireman, and David Wojcicki. Not present for photo were Brad Barr, Peter Eisele, and Mike Bice.

Plans Underway for Area Chapter of Kidney Foundation

Organizational meeting for a lay chapter of Kidney Foundation of Michigan in the Washtenaw, Monroe, Lenawee and Livingston county area, will be held Monday, March 18, in the public meeting room of Ann Arbor Federal Savings & Loan, Liberty at Division, in Ann Arbor at 8 p.m.

Miss Phyllis J. Carty and David St. Clair of the Kidney Foundation will share with those attending needs which may be met through the formation of a lay kidney-

oriented group. At this meeting a discussion will be held on activities in which a chapter can involve itself. Also provisional officers will be elected. For further information please call Jean M. Weiler 761-4221.

School Building Program Progressing on Schedule

Chelsea School District's building program, approved last Dec. 17, is progressing through legal and architectural channels to allow the start of construction by late summer.

The bonds have received final qualification by the School Bond Loan Section of the Department of Education. All legal and financial documents have been filed with the Municipal Finance Commission for their study and review.

At the present time, Municipal Finance approval is expected by April 15 with the sale of the bonds scheduled for approximately May 6.

While the legal and financial matters are taking place, the architects are also at work on the design of the facilities. To date the board has approved the Educational Specifications (the program to be offered in the buildings) for North and South Elementary schools, the Beach school addition and the high school additions.

Schematic drawings for the additions to North, South and Beach have been approved and Design Development (the way in which the structures will be shaped and built) has been approved for work by the architects.

Schematic drawings for high school additions will be presented for board approval at their next meeting along with specifications for the bus garage and maintenance facility.

If the sale of the bonds takes place on May 6 as planned, the following schedule will be maintained to facilitate a sequence of constructions:

North Elementary School: Because of the size of the additions to North school it is the plan to start actual above ground construction in February of 1975 to avoid severe disruption to the school and safety problems.

Nov. 1, 1974—Footings installed.
Feb. 1, 1975—Above ground construction.

July 1, 1975—Completion.
South Elementary School:
Aug. 6, 1974—Begin construction.

Jan. 6, 1975—Completion.

Beach School:
Oct. 1, 1974—Begin construction.

July 1, 1975—Completion.

High School:
Sept. 1, 1974—Begin construction.

July 1, 1975—Completion.

Bus Garage and Maintenance Facility:
April 1, 1975—Begin construction.

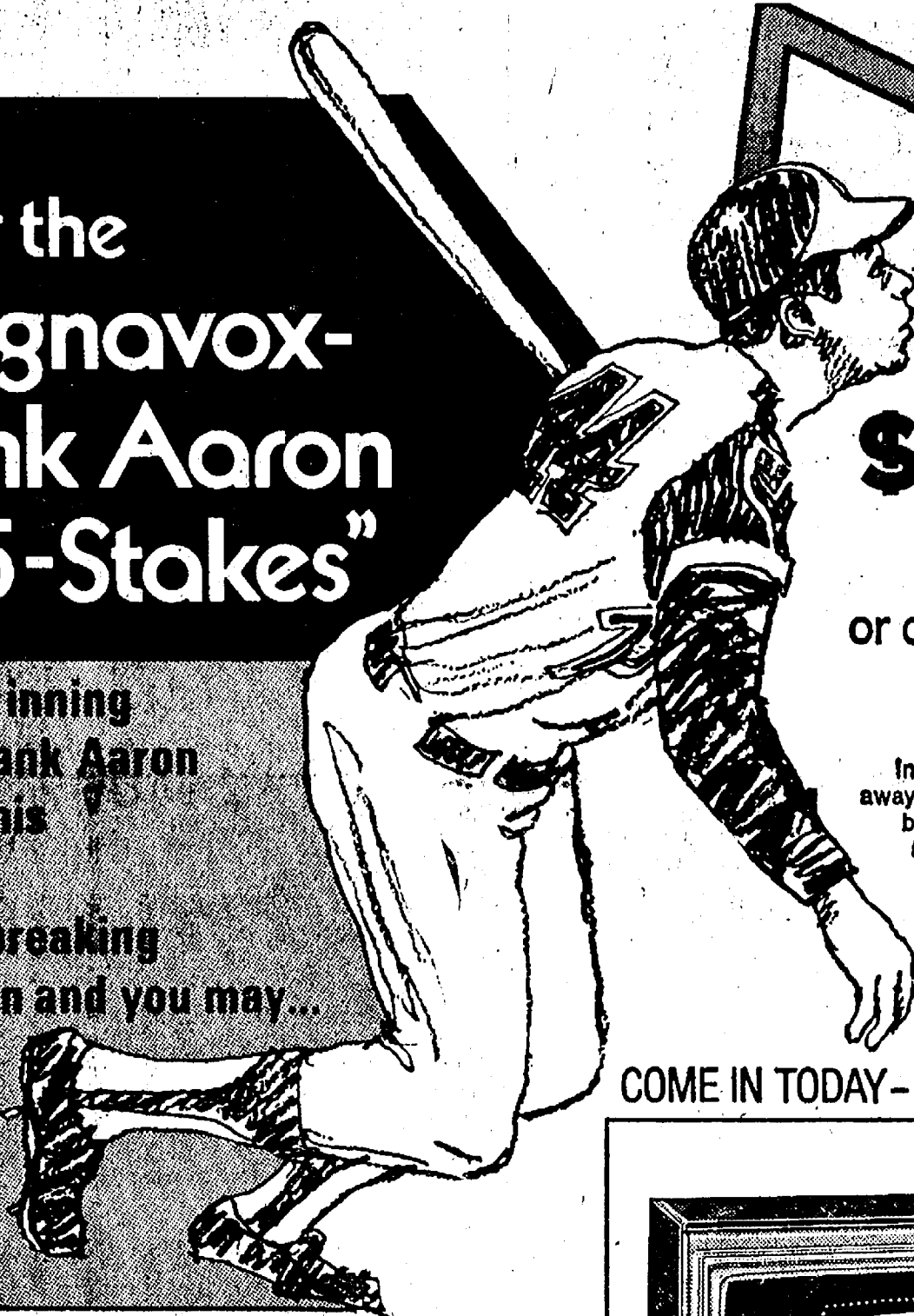
July 31, 1975—Completion.

Provided that all phases of design and construction can be kept on schedule, it is planned that all additions will be available for the opening of school in September of 1975.

An Alaska king crab's great claw can crunch halfway through a broomstick or break a finger.

Enter the Magnavox-Hank Aaron "715-Stakes"

Pick the inning when Hank Aaron will hit his 715th record-breaking home run and you may...

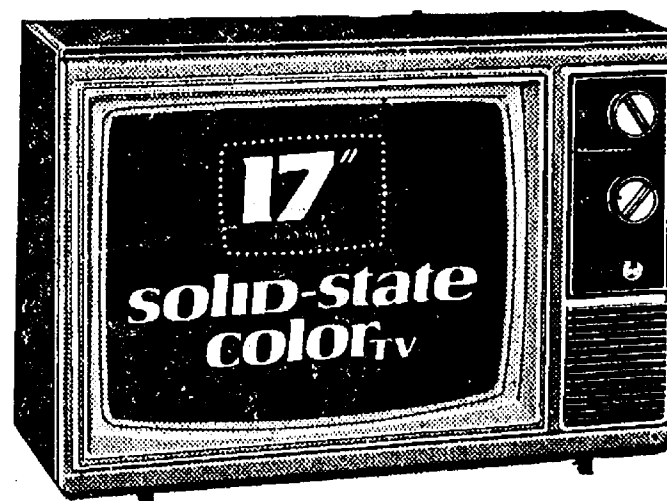


...WIN \$25,000

or one of 715 Magnavox Products
... A TOTAL CASH AND PRIZE RETAIL VALUE OF OVER \$55,000

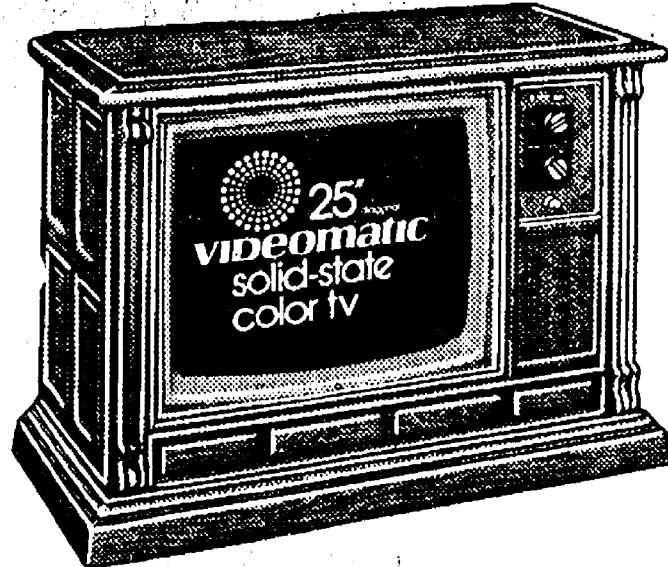
In addition to \$25,000 in cash... Magnavox will be giving away 15 deluxe 25" diagonal Videomatic color consoles, 20 beautiful stereo consoles, 30 black and white portables, 50 Odyssey Electronic Game Centers and 600 portable radios! Come in today for your official entry blank and complete rules... or write for the official entry blank and rules to Magnavox Hank Aaron "715 - Stakes", P.O. Box 7, Pound Ridge, New York 10576. No purchase necessary.

COME IN TODAY - SAVE ON THESE ANNUAL SALE "WINNERS"!



SAVE \$21⁰⁷ NOW \$378⁸⁸

The reliability of a 100% Solid-State Modular Chassis... The Super-Bright™ In-Line Tube for a really bright, sharp, clear picture... Automatic Fine Tuning to keep station signals locked in... Automatic Color to reduce variations in color intensity—all in model 42201

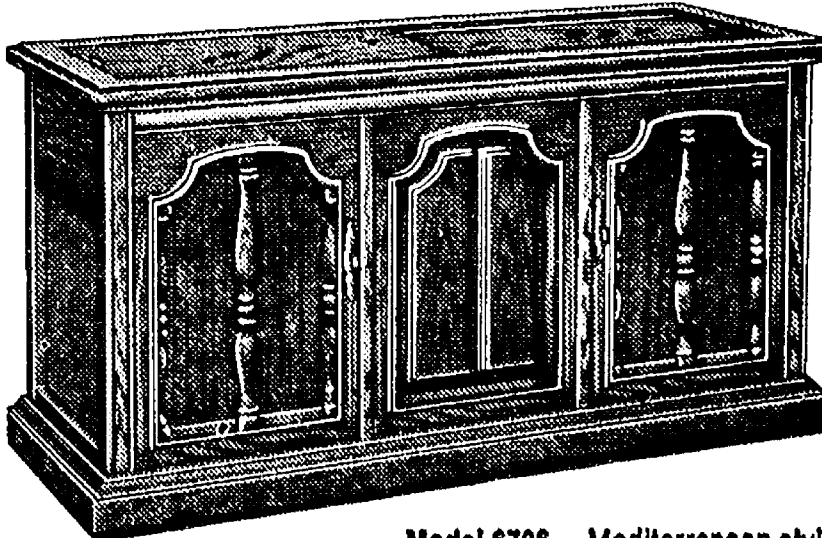


Model 4756 — Mediterranean styling

This beautiful Magnavox adjusts its own picture to changing room light — automatically—for a clear, sharp picture in any room—day or night. One-button tuning, of course... and 100% solid-state chassis, too... plus a Super Bright™ Picture Tube and fine furniture design in your choice of six styles—all unmistakably Magnavox in quality, performance and reliability.

SAVE \$50²¹
NOW \$599⁷⁴

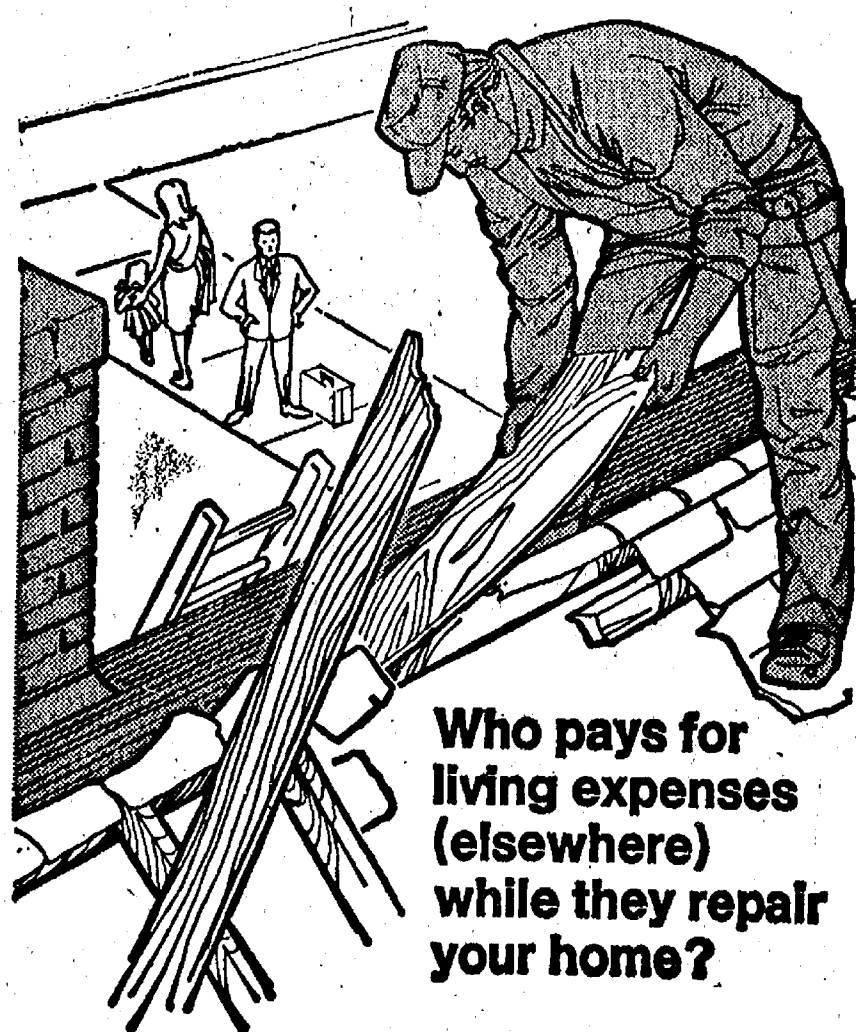
Stereo FM/AM Radio-Phono with 8-Track



Model 6706 — Mediterranean styling

SAVE \$50⁰⁰ NOW \$399⁹⁵

Beautiful looking, beautiful sounding—this magnificent Magnavox includes a built-in 8-Track Tape Player and a built-in Matrix 4-Channel Sound Decoder, plus an Air-Suspension System with six speakers. Your choice of six authentic furniture styles.



Who pays for living expenses (elsewhere) while they repair your home?

Most policies provide the coverages you expect—fire, lightning, storms, riots, vandalism and the like. They cover the cost of repairs due to these losses. But have you thought about the cost of living elsewhere if your home has to be repaired or rebuilt? It could run into hundreds of dollars. Or, it could be covered in black and white in our Homeowners Policy, so we would pay those extra living expenses! Give us a call. We'll put your home insurance all together in one policy for convenience and saving's sake.

it's better
altogether

A. D. MAYER AGENCY, INC.
115 PARK ST., CHELSEA
BOB BARLOW, AGENT
PHONE 475-2030

Auto-Owners Insurance
Life Home Car Business

HEYDLAUFF'S

113 North Main, Chelsea

Phone 475-1221